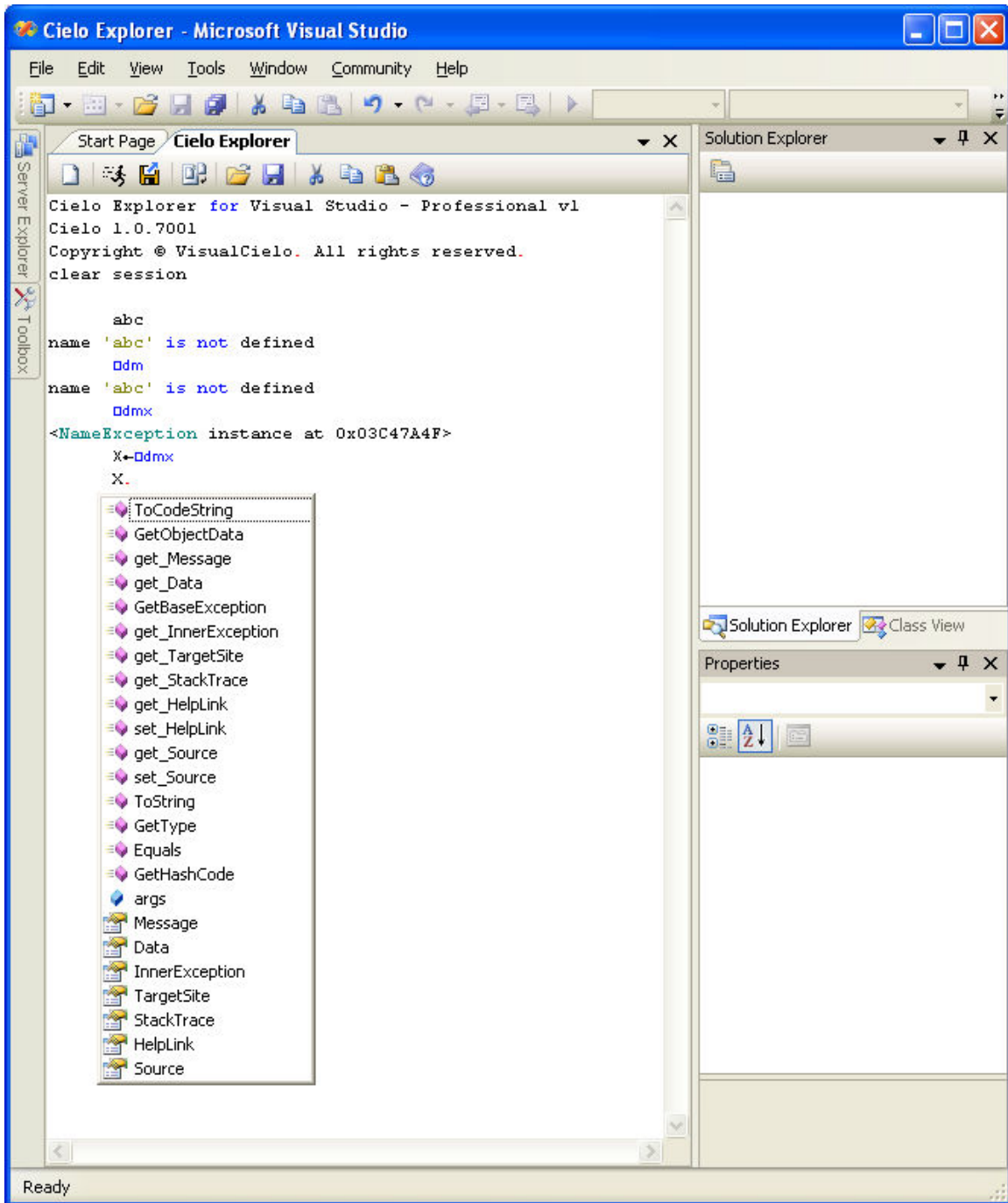


VisualAPL: □DMX – Extended Diagnostic Message

In VisualAPL the ‘traditional’ □DM (string object) is available to recall the last error message issues by the Cielo Explorer session. In addition to □DM, VisualAPL implements □DMX which is an object with additional methods and properties noted below, to make the VisualStudio diagnostic message information available in the VisualAPL session. □DMX might be considered as providing information which is intermediate between that provided by (text string) □DM and that provided by the (very extensive) .Net exception object.

In the screen capture of a Cielo Explorer VisualAPL session provided below, a trivial error is generated for illustration purposes. The traditional □DM result is a string object indicating what would be a ‘value error’ in legacy APL implementations. The □DMX result in “<NameException ...>” indicates that □DMX is an object with .Net type ‘NameException’. Assigning the □DMX object to the variable X and then using Visual Studio ‘intellisense’, the available methods and properties of the □DMX are revealed.



The screen capture below illustrates the values which can be obtained by a few of the methods and properties of the `[]dmx` object:

