

APLNextApplicationServer

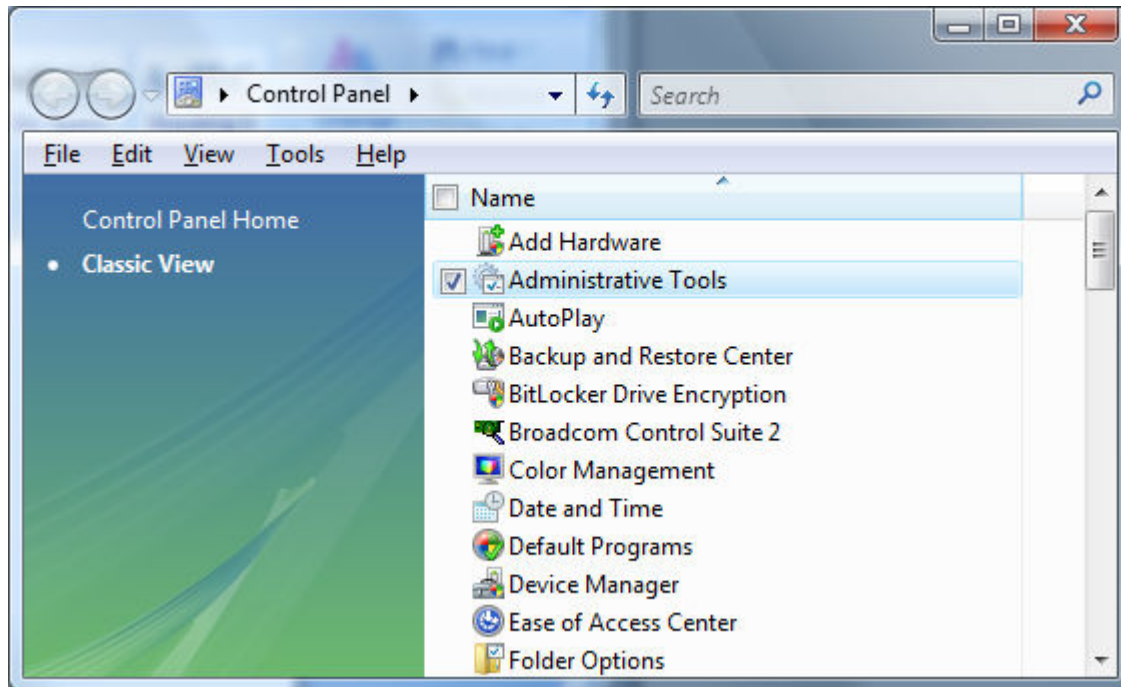
Making the Server Visible to the Programmer

When the APLNextApplicationServer product is to be used for development of a web-based application by an APL+Win programmer, it is helpful to make the server visible to the programmer for purposes of design, testing and de-bugging.

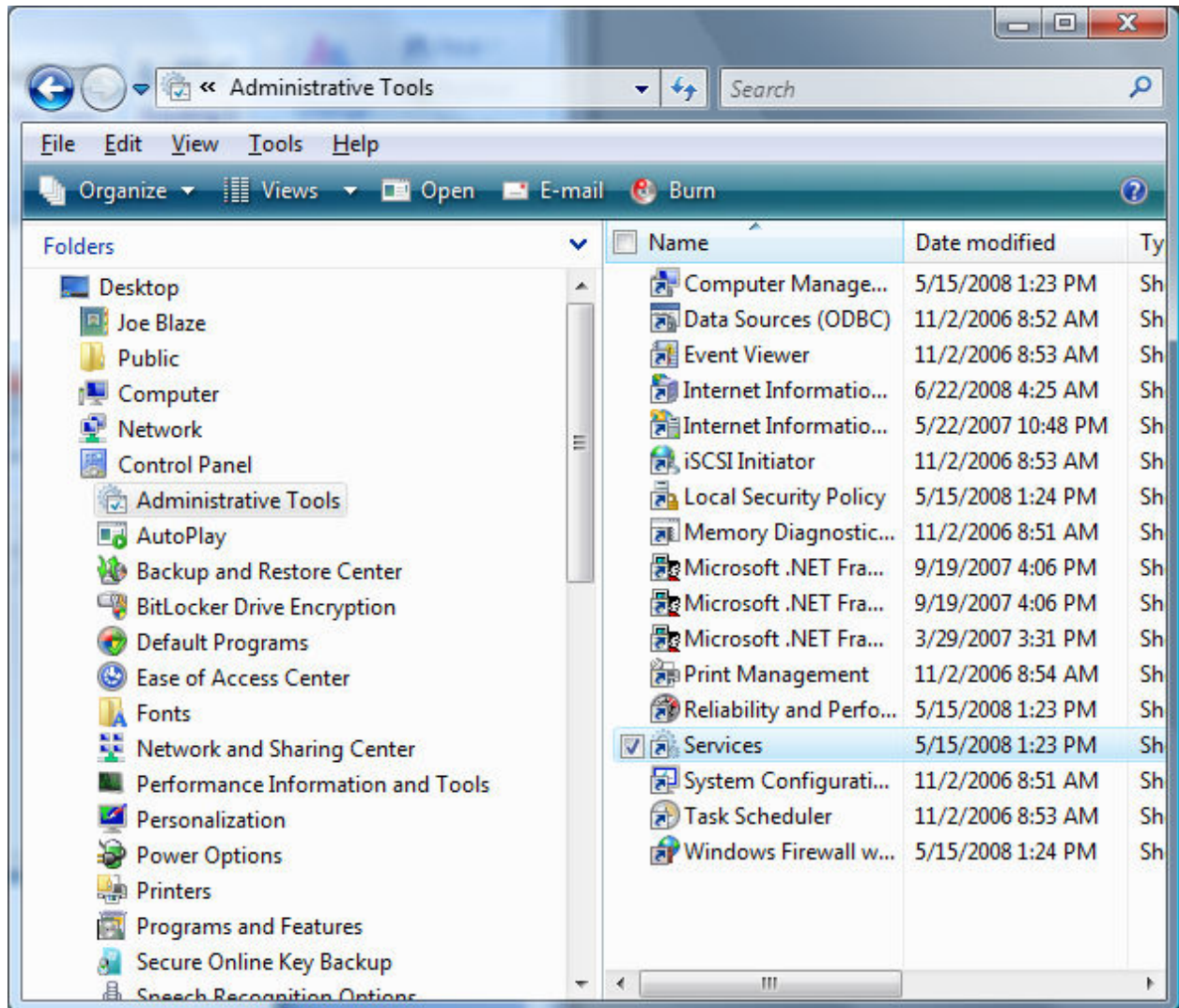
When the APLNextApplicationServer product is used in a production environment, since there is no 'user' observing the 'server' machine, making the APLNextApplicationServer 'visible' on that 'server' machine may not be required or desirable.

To make the APLNextApplicationServer 'visible', follow the process described below.

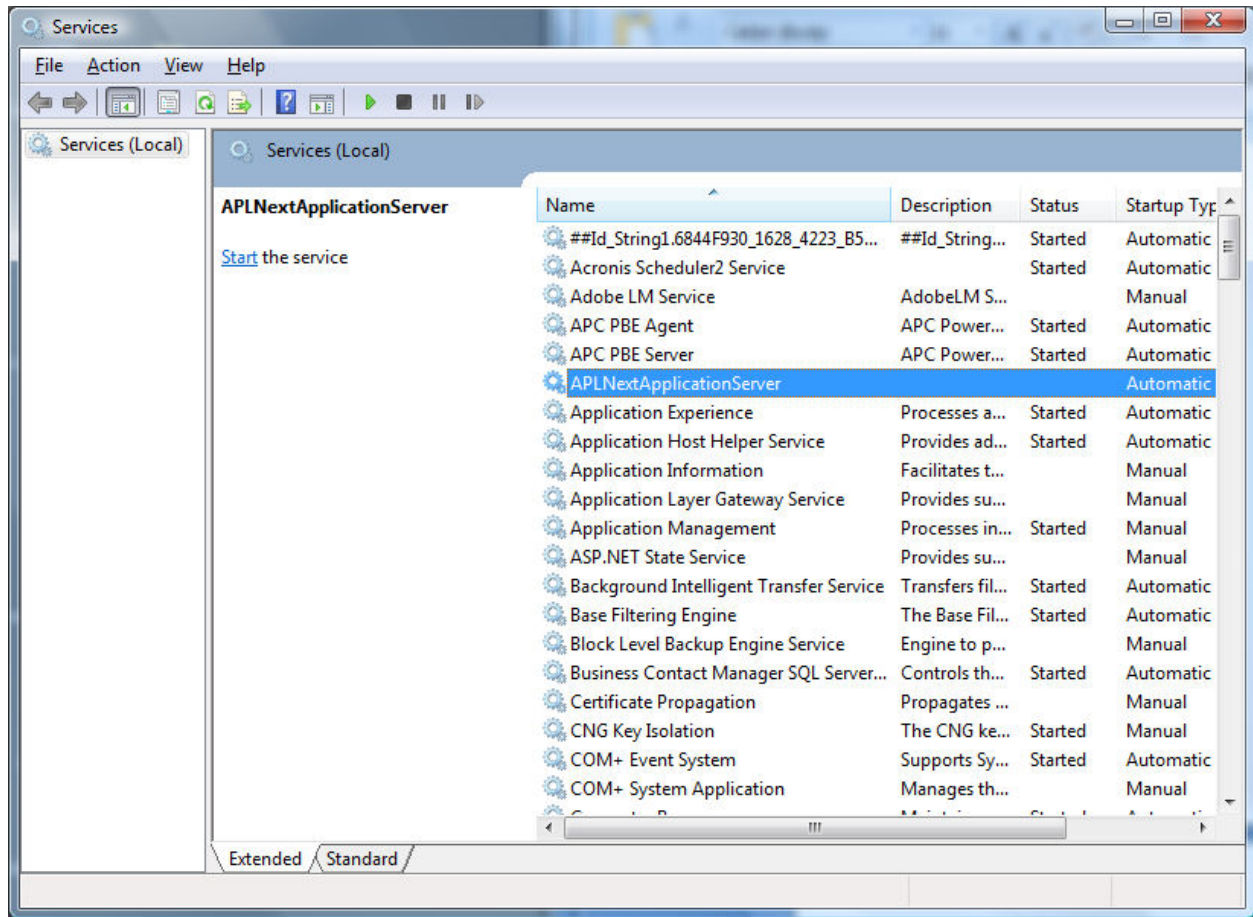
From the Windows Control Panel, select the Administrative Tools:



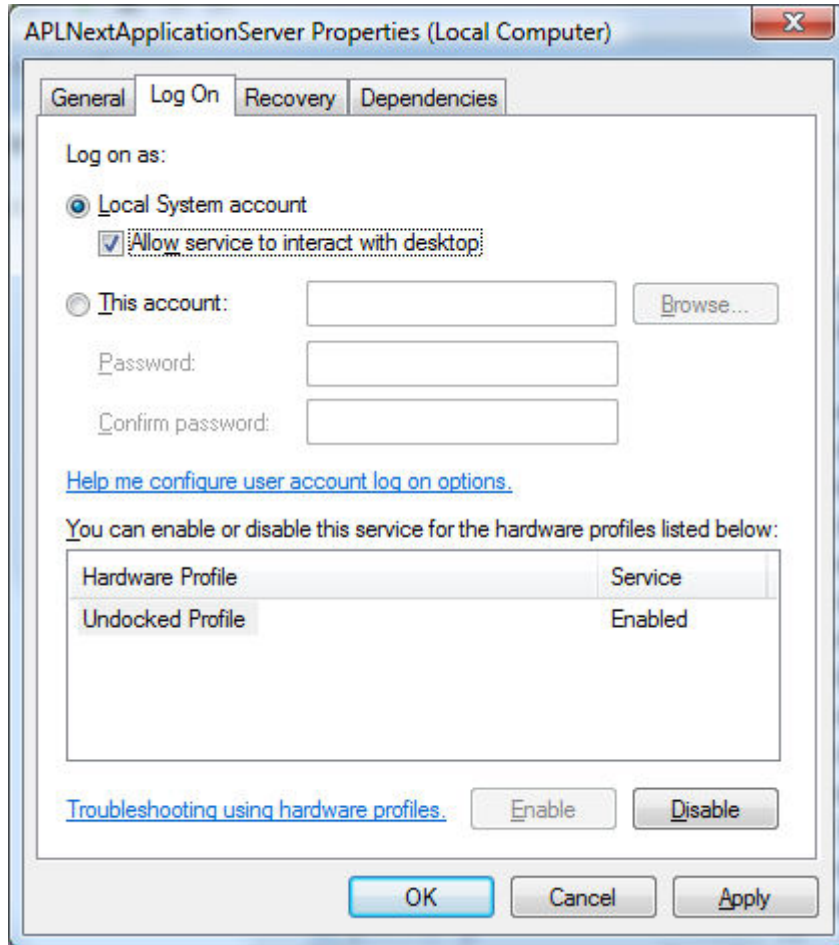
From the Windows Administrative Tools, select the Windows Services:



From the Windows Services, select the APLNextApplicationServer service:



From the Windows dialog for APLNextApplicationServer, select the 'Log On' tab and check the 'Log on as:' 'Local System account' 'Allow service to interact with desktop':

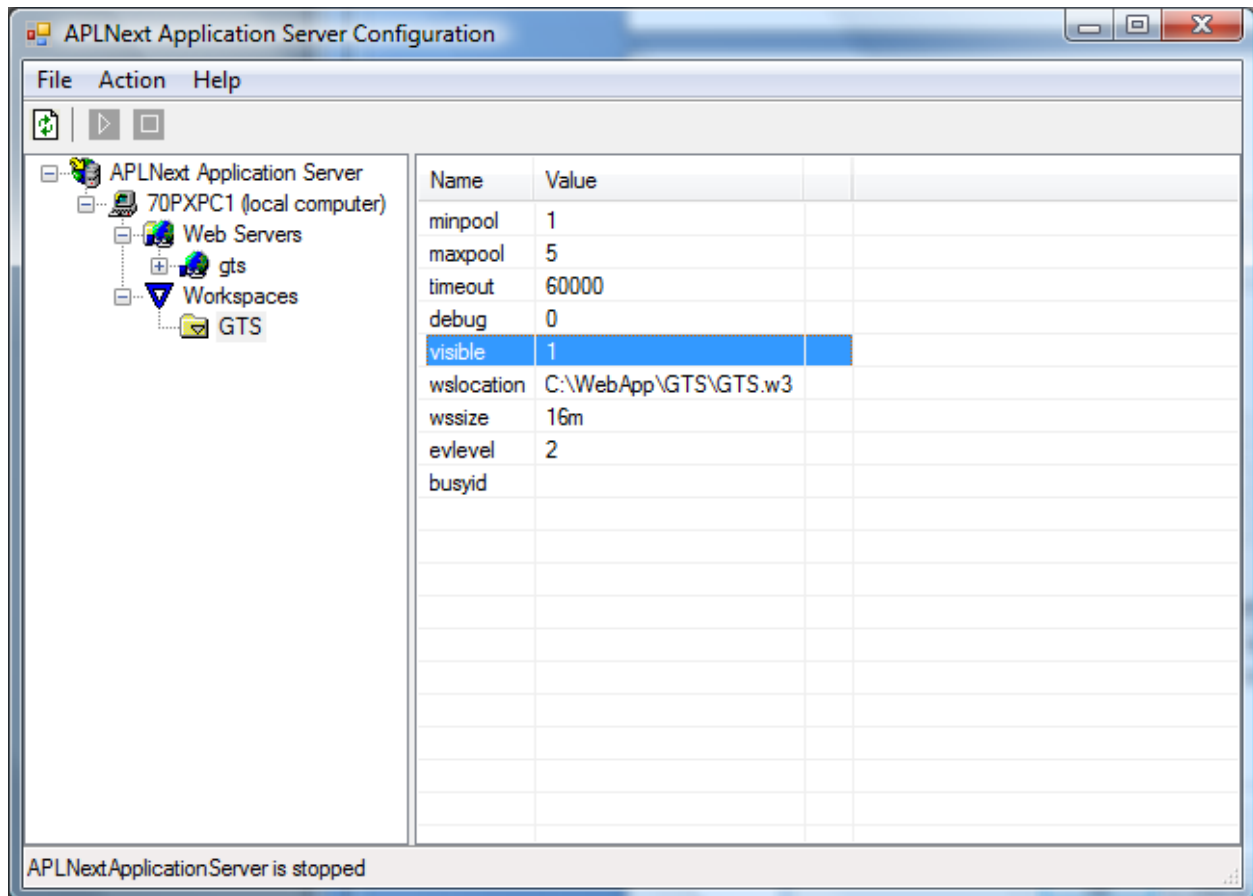


You may now close the above Windows dialogs.

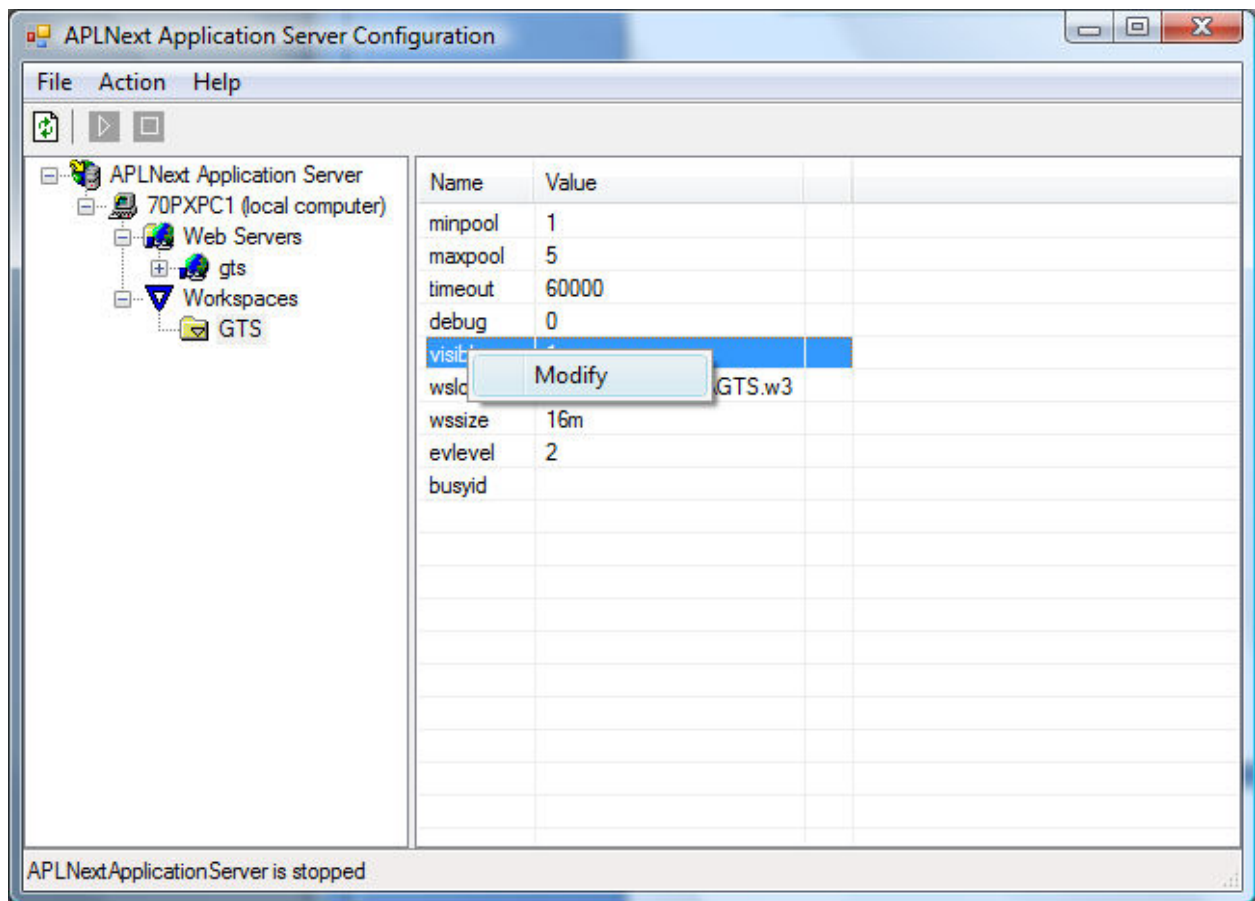
Next, start the 'APLNext Application Server Admin' tool. When the APLNextApplicationServer product is installed a program short-cut has been established under Start > All Programs > APLNext > APLNextApplicationServer > APLNextApplicationServer Admin.

Using the Windows tree control in the left pane of this dialog, open the Workspaces node and select the node of the virtual workspace which will be made visible on the 'server' machine desktop.

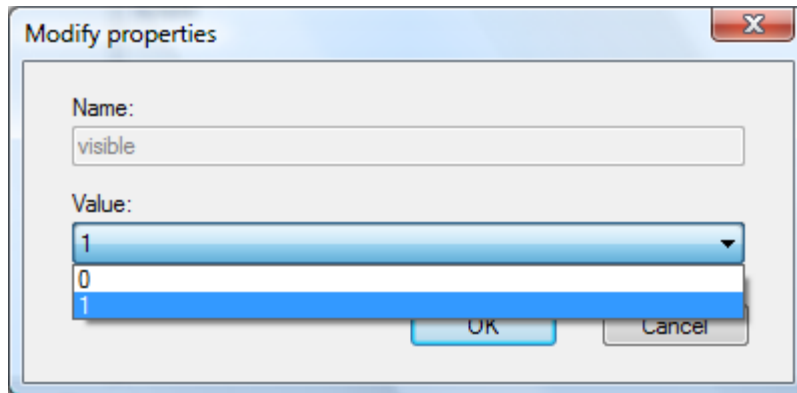
On the right panel select the 'visible' property of this virtual workspace.



Right click the 'visible' property and click the 'Modify' pop-up menu item.



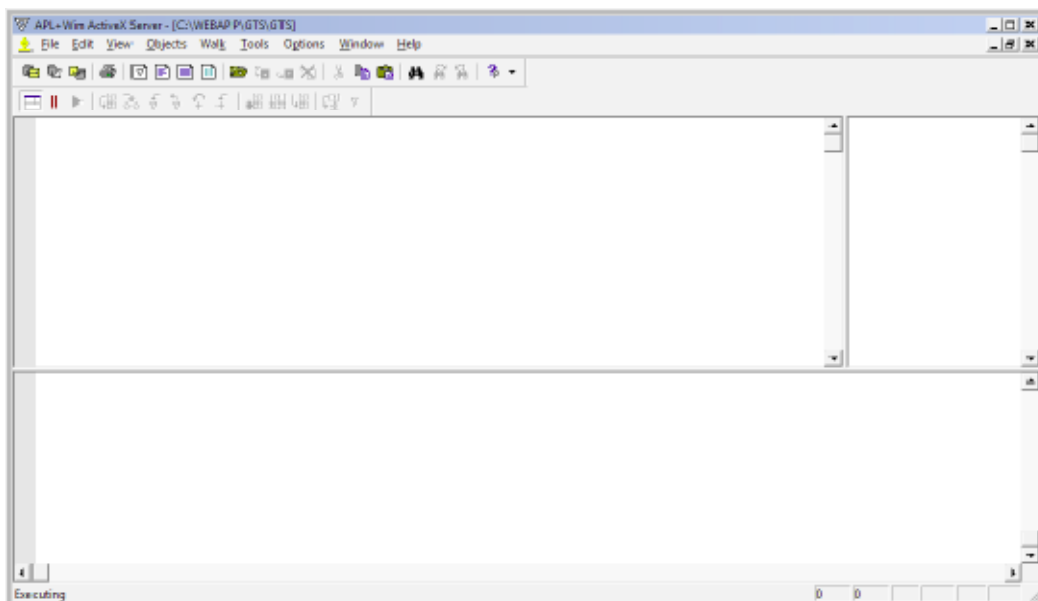
When the 'Modify properties' dialog is presented, choose a value of '1' to make this virtual workspace visible.



The APLNextApplicationServer uses the APL+Win ActiveX Server to support the interaction between Internet-based 'clients' and APL+Win workspaces and functions on the machine on which APLNextApplicationServer has been installed.

Because the APLNextApplicationServer has been started, the programmer-specified number of instances of the APL+Win ActiveX server have been started for this virtual workspace. Because this virtual workspace has been made 'visible', each of these instances of APL+Win have their own APL+Win 'session' with complete programming and debugging capabilities.

Depending on the Windows operating system in use on the machine on which APLNextApplicationServer has been installed, individual tabs will be available in the Windows desktop 'tray' for each instance of the APL+Win ActiveX server which has been initiated by APLNextApplicationServer.

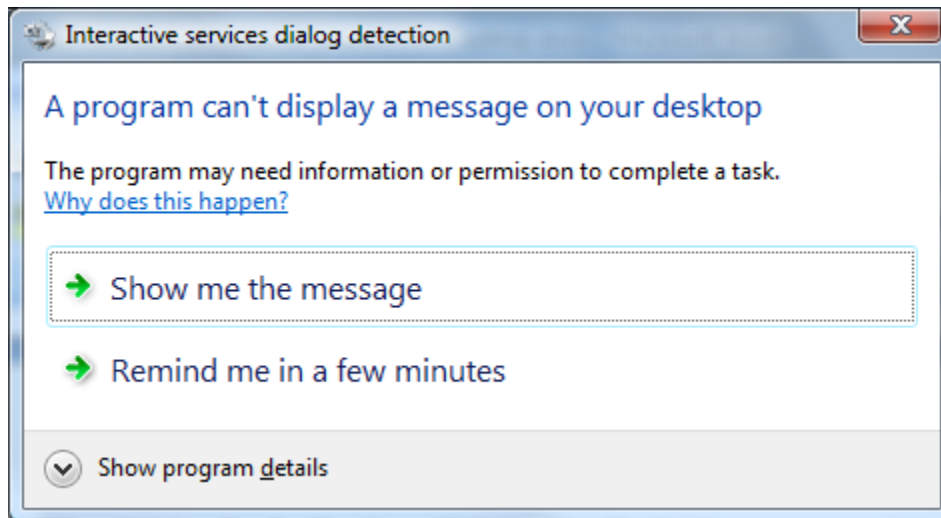


Additional Note – APLNextApplicationServer Visibility

Microsoft Vista and Windows Server 2003/2008

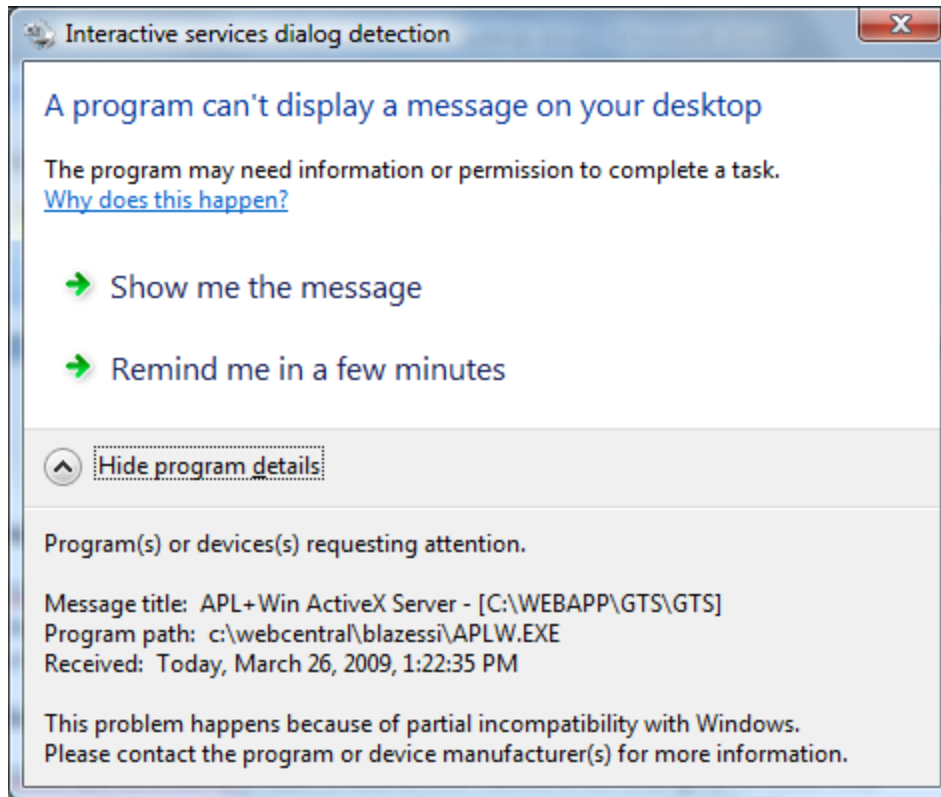
When the APLNextApplicationServer product is installed on a machine which is using the Windows Vista operating system, the Vista security regime separates the programmer's desktop from the Windows services desktop. A similar security regime applies to the Windows Server 2003/2008 operating systems.

In this situation when APLNextApplicationServer is started and 'visible', the instances of APL+Win ActiveX server established by APLNextApplicationServer are not visible from the desktop of the Microsoft Windows Vista user which the programmer used to log onto the machine. Instead, on that desktop, a Windows 'tray' element called '**Interactive services...**' will exist. Clicking this element will present the following Windows dialog:



Clicking the 'Remind me in a few minutes' link will temporarily hide this dialog and the '**Interactive services...**' element in the desktop 'tray'.

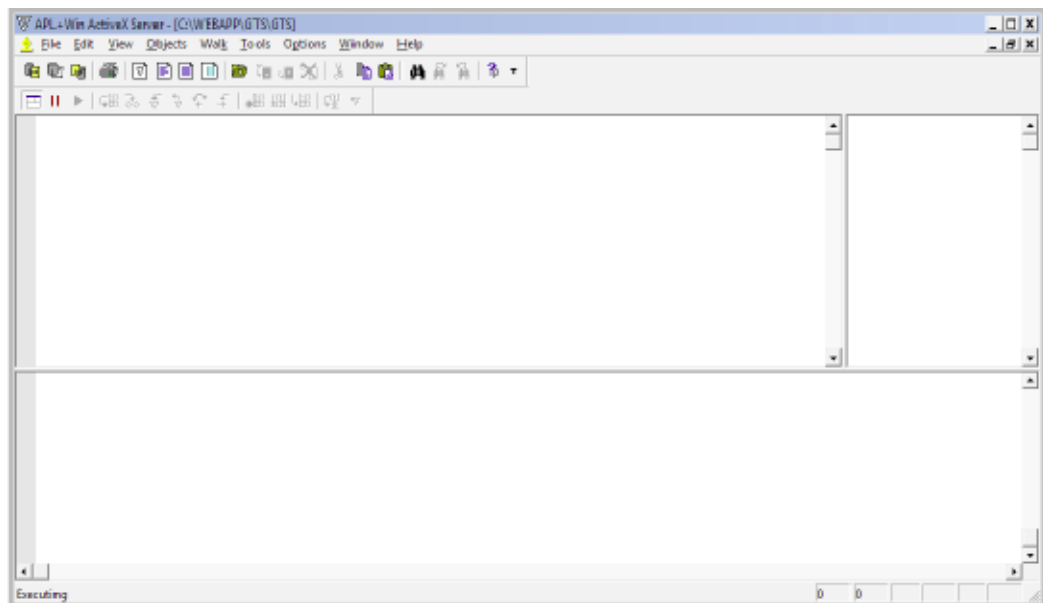
Clicking the 'Show program details' button indicates that the APL+Win ActiveX Server is the program which is operating as a service under Windows Vista as part of the Internet / APL+Win functionality established by the APLNextApplicationServer software.



Clicking the 'Show me the message' link will hide the desktop associated with the Microsoft Windows Vista user the programmer used to log onto the machine and show Microsoft Windows Vista services desktop.

The Vista security regime keeps these two desk tops 'isolated' from one another because they are associated with different user accounts. For example, the Windows 'clipboards' associated with each desktop are independent and cannot share information. The creative APL programmer can still access the machine's disk and its associated files and workspaces and employ certain other tools to transfer information between the two user accounts.

Displayed on the Microsoft Windows Vista services desktop will be the APL programmer 'sessions' associated with the APL+Win ActiveX Server instances created by the APLNextApplicationServer.



In addition, displayed on the Microsoft Windows Vista services desktop will be the 'Interactive services dialog detection' dialog. Clicking the 'Return now' link will hide the Microsoft Windows Vista services desktop and show the desktop associated with the Microsoft Windows Vista user the programmer used to log onto the machine.

