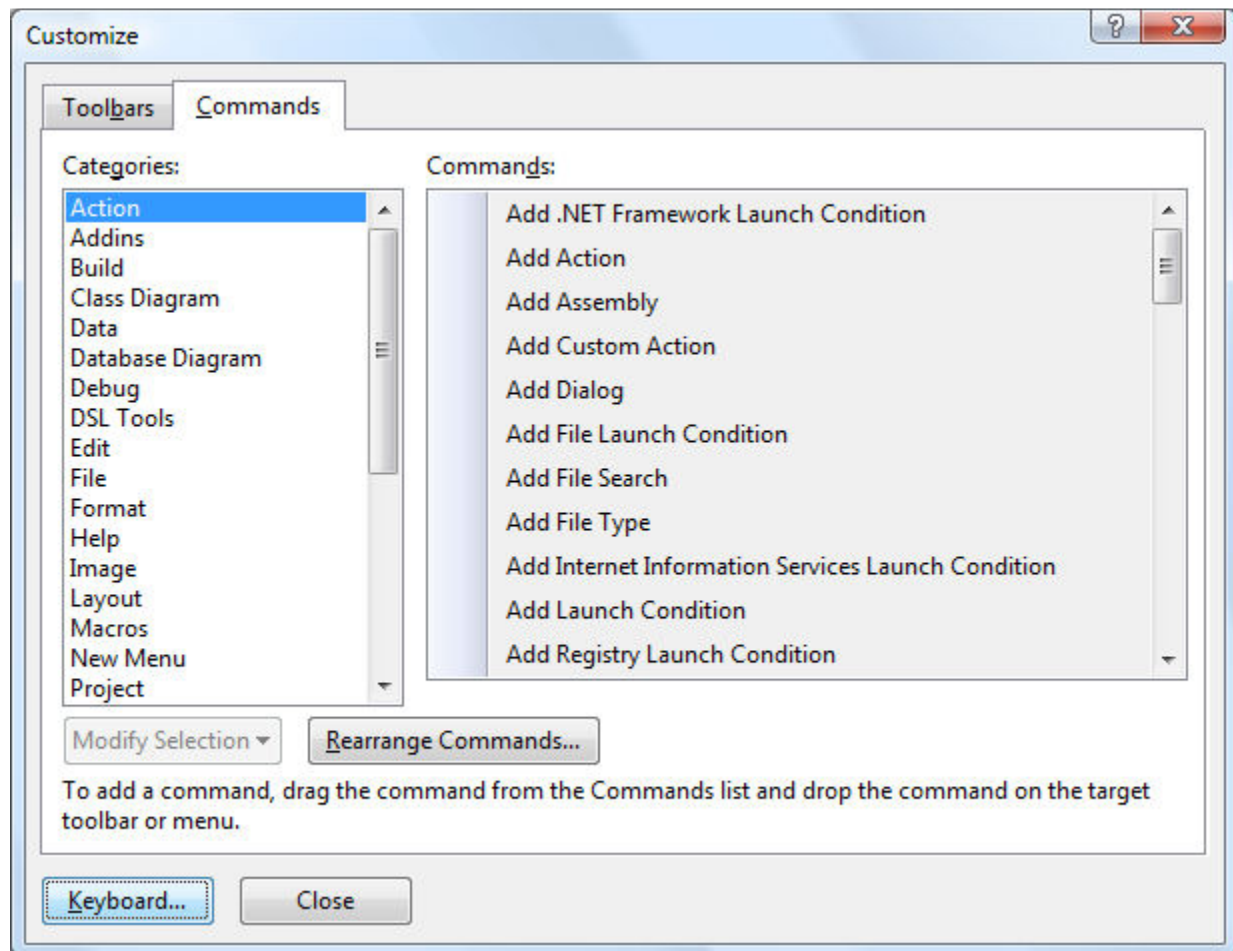


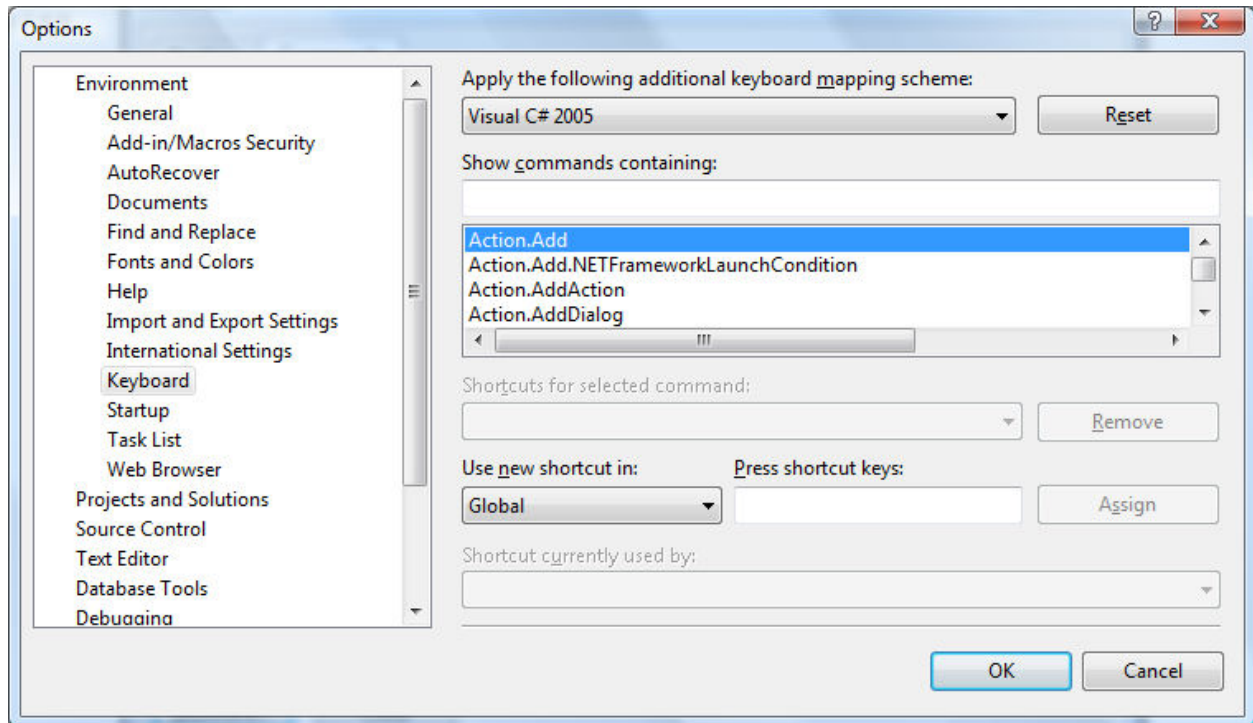
## Keyboard Shortcuts for VisualAPL Commands

The keyboard shortcuts for VisualAPL commands have been established using the Microsoft Visual Studio 2008 Tools > Customize menu item. Using this menu item you can determine the keyboard shortcut for any VisualAPL command and, if desired, modify or add keyboard shortcuts for any VisualAPL command.

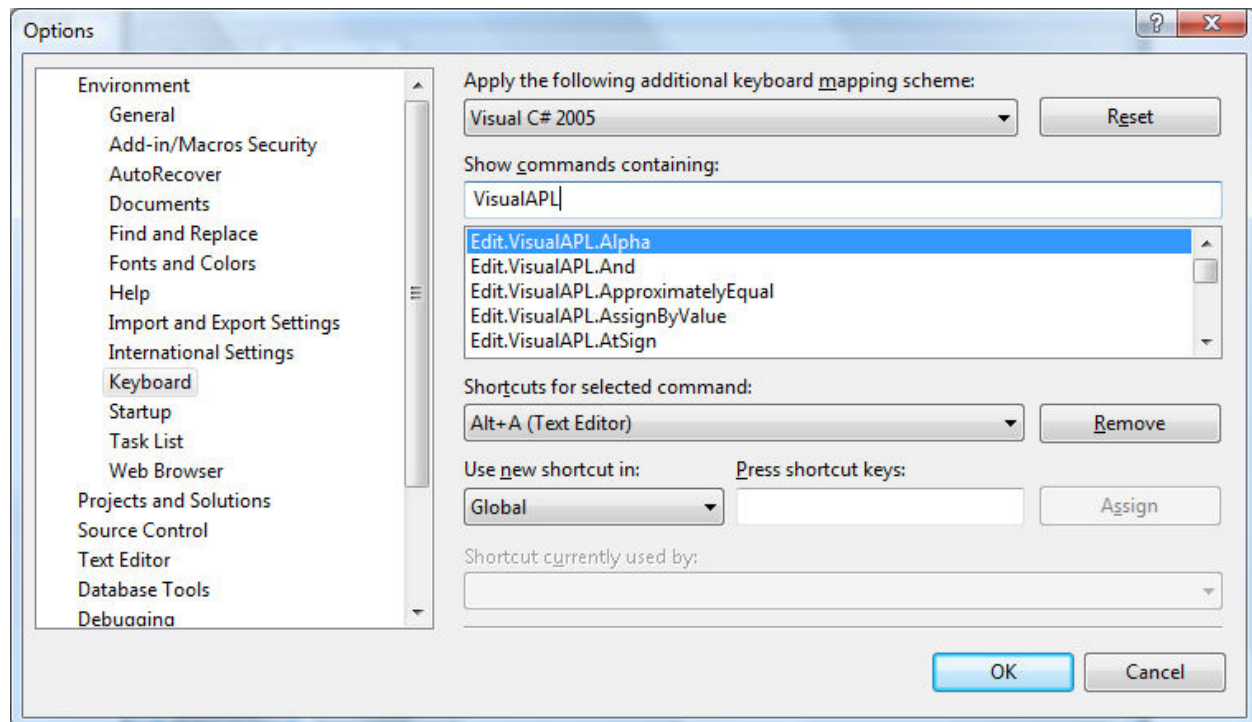
From the Visual Studio 2008 main form use the Tools > Customize menu item to present the following dialog:



On this dialog click the 'Keyboard' button to present the following dialog:



In the “Apply the following additional keyboard mapping scheme” list box, select “Visual C# 2005:” and in the “Show commands containing:” edit box enter “VisualAPL” so that the VisualAPL section of the commands list will be filtered. The dialog should now look like:

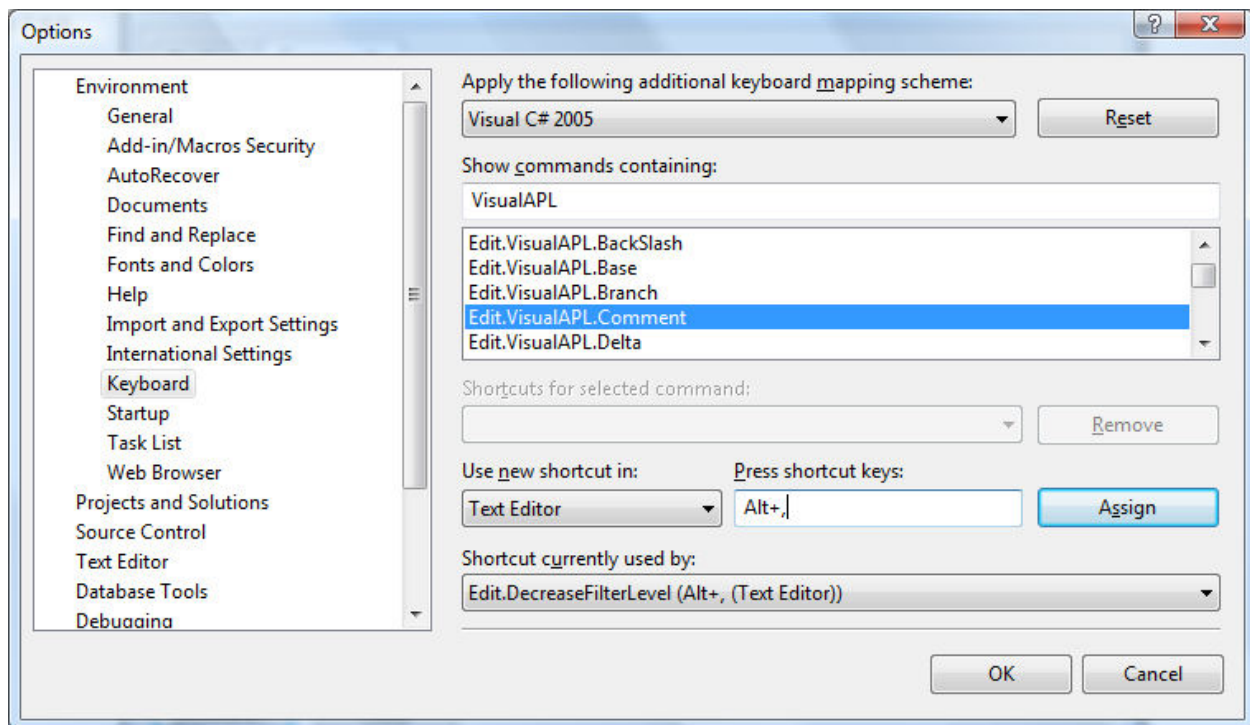


For example to determine the keyboard shortcut which has been assigned to the VisualAPL iota command, scroll down to “Edit.VisualAPL.iota” in the list of VisualAPL commands and observe in the “Shortcuts for selected command:” edit box that “Alt+I (Text Editor)” is illustrated. This means that for purposes of the Visual Studio 2008 “Text Editor”, which includes the VisualAPL .Net programming window and the Cielo Explorer immediate mode session window, the “Alt+I” keystroke will produce the VisualAPL iota command in the window.

Note that the “Alt+” keystroke modifier is language dependent, for example on the German ‘QWERTZ’ keyboard layout, only the left “Alt+” keystroke modifier is available. To learn more about language-dependent keyboards, go to: [http://en.wikipedia.org/wiki/Keyboard\\_layout](http://en.wikipedia.org/wiki/Keyboard_layout).

In the default installation of VisualAPL, the VisualAPL comment (or lamp) command has not been assigned to a keyboard shortcut. Of course the standard Microsoft Visual Studio 2008 “//” command is available as a substitute for the VisualAPL comment command. If you wanted to easily type the VisualAPL comment command by associating it with the traditional APL “Alt+,” keyboard shortcut:

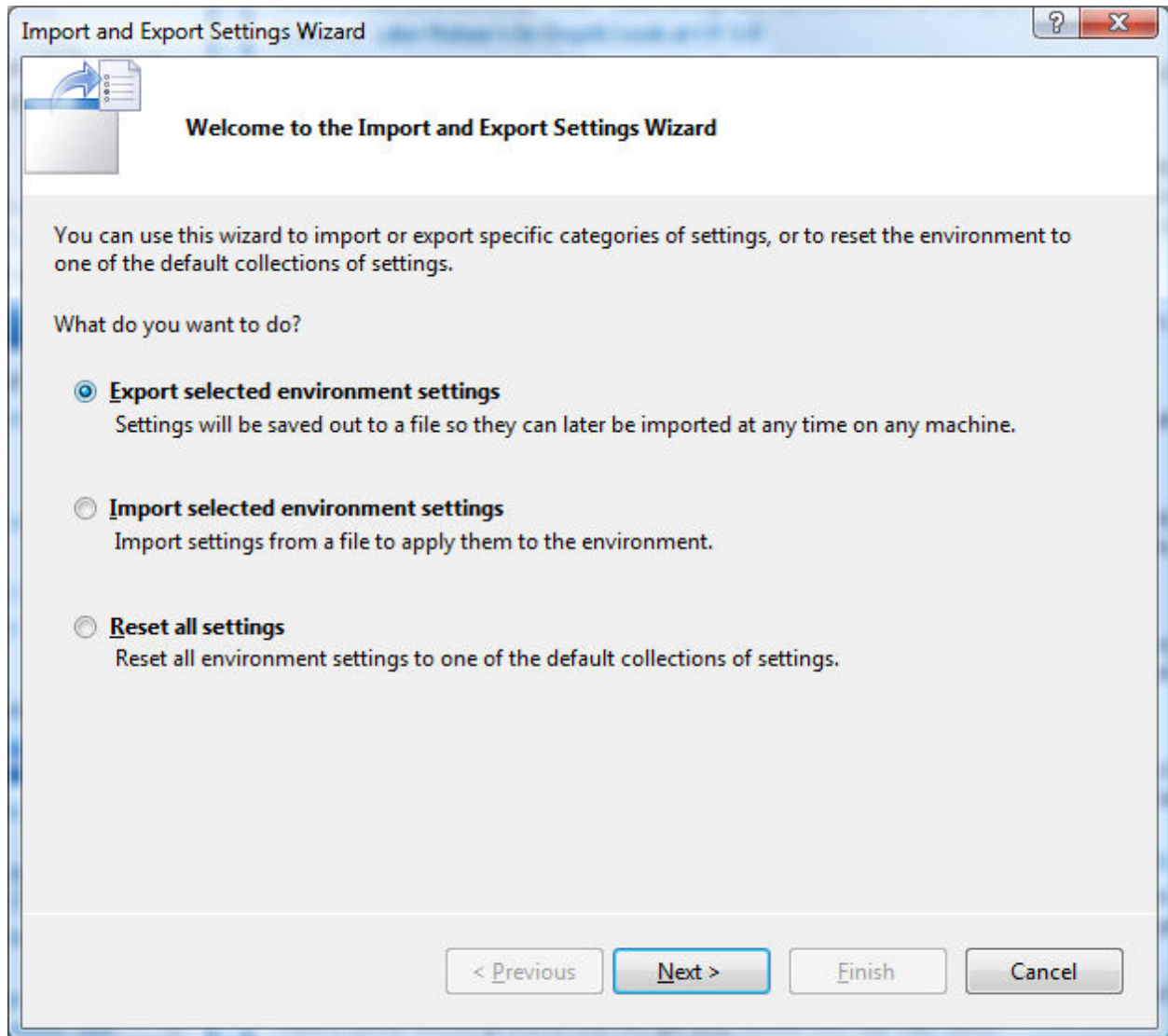
- Scroll to the “Edit.VisualAPL.Comment” in the list of VisualAPL commands
- Select “Text Editor” in the “Use new shortcut in:” list box
- Single left click on the “Press shortcut keys:” edit box to prepare it for input
- Press the “Alt+,” keyboard shortcut and the description of this keyboard shortcut will appear in the “Press shortcut keys:” edit box.
- To adopt this keyboard shortcut assignment in your copy of Visual Studio 2008, press the “Assign” button.
- Note that the Microsoft Visual Studio 2008 keyboard short cut assignment of “Edit.DecreaseFilterLevel (Alt+, (Text Editor))” will be replaced if you click the “Assign” button
- Click the “OK” button to accept the modifications to the keyboard shortcuts you have made.



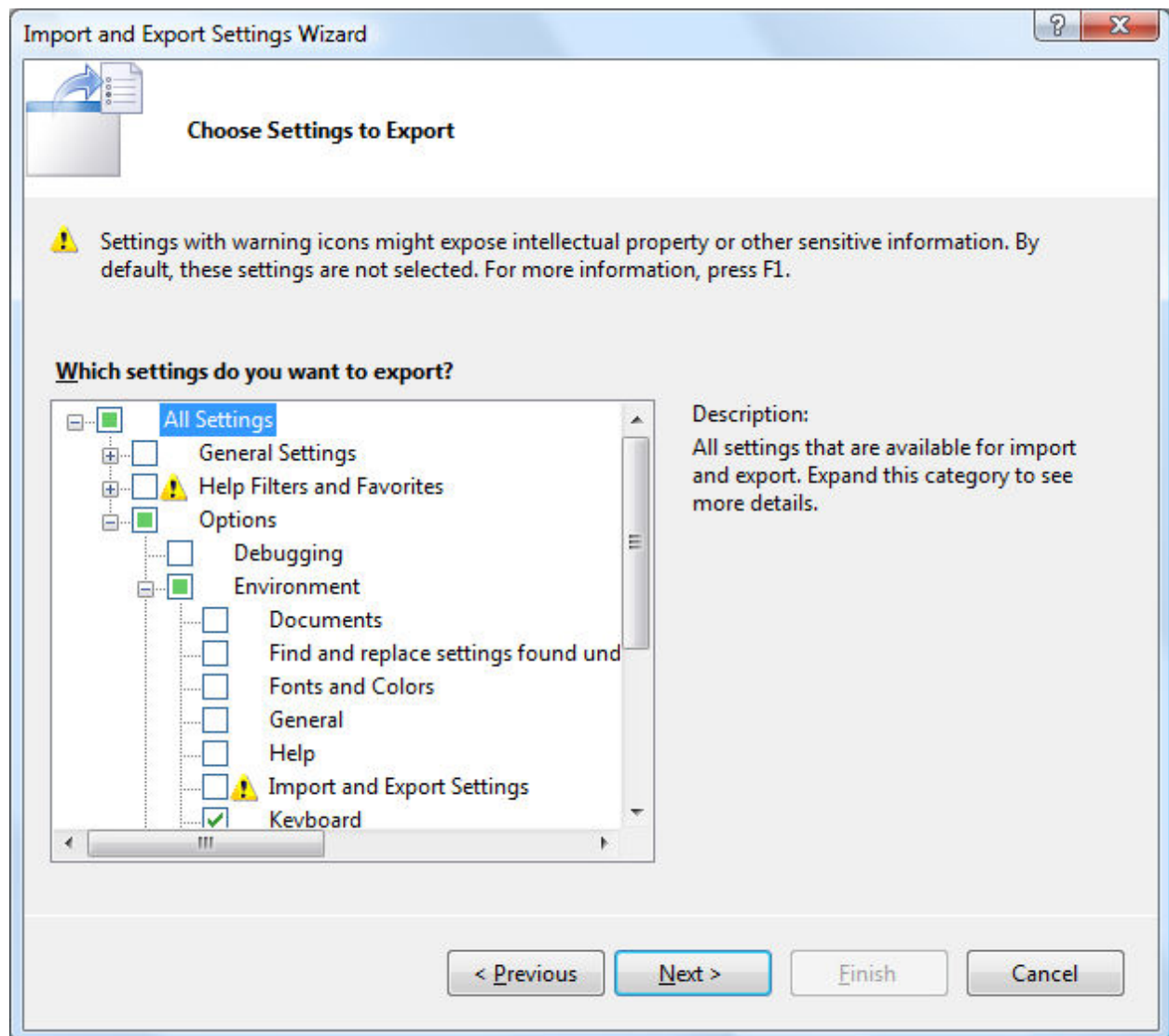
An APLNext screen cast that shows the VisualAPL keyboard shortcut modification methodology is available at:

[http://www.visualapl.com/community/blogs/aplnext\\_screencasts/archive/2007/03/04/308.aspx](http://www.visualapl.com/community/blogs/aplnext_screencasts/archive/2007/03/04/308.aspx)

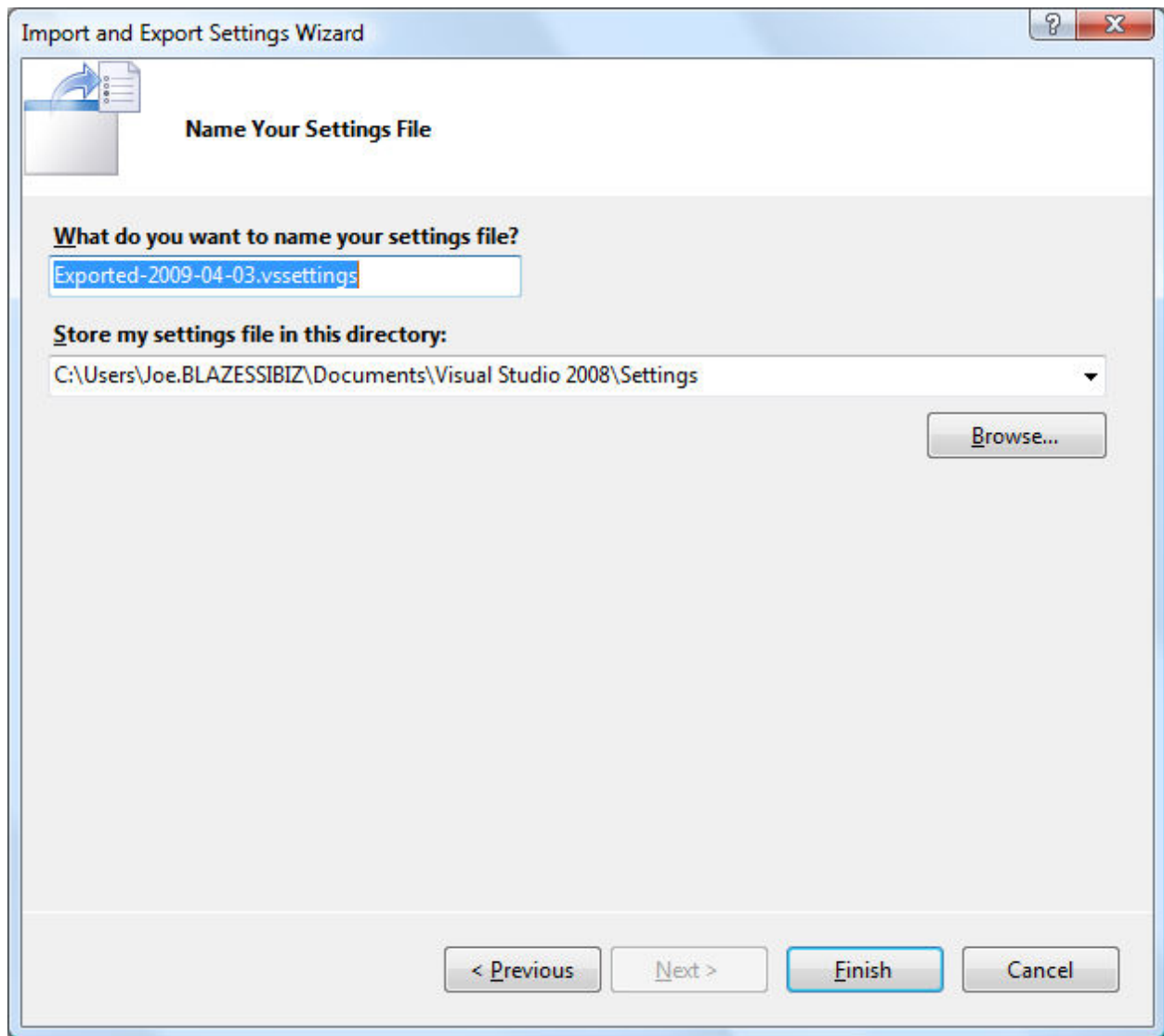
If you would like to export your keyboard shortcut settings, from the Visual Studio 2008 main form use the Tools > Import and Export Settings menu item to present the following dialog:



To export the keyboard shortcuts, select “Export selected environment settings” and click the “Next” button to display the following dialog:



De-select “All Settings”, expand the “All Settings” tree, expand the “Options” tree, expand the “Environment” tree and select the “Keyboard” node of the “Environment” tree. Click the “Next” button to present the following dialog:



The image shows a Windows-style dialog box titled "Import and Export Settings Wizard". The title bar includes a question mark icon and a close button (X). The main area of the dialog has a header section with a folder icon and the text "Name Your Settings File". Below this, there are two sections: "What do you want to name your settings file?" with a text input field containing "Exported-2009-04-03.vssettings", and "Store my settings file in this directory:" with a dropdown menu showing "C:\Users\Joe.BLAZESSIBIZ\Documents\Visual Studio 2008\Settings". A "Browse..." button is located to the right of the dropdown. At the bottom of the dialog, there are four buttons: "< Previous", "Next >", "Finish" (which is highlighted with a blue border), and "Cancel".

**Import and Export Settings Wizard**

**Name Your Settings File**

What do you want to name your settings file?  
Exported-2009-04-03.vssettings

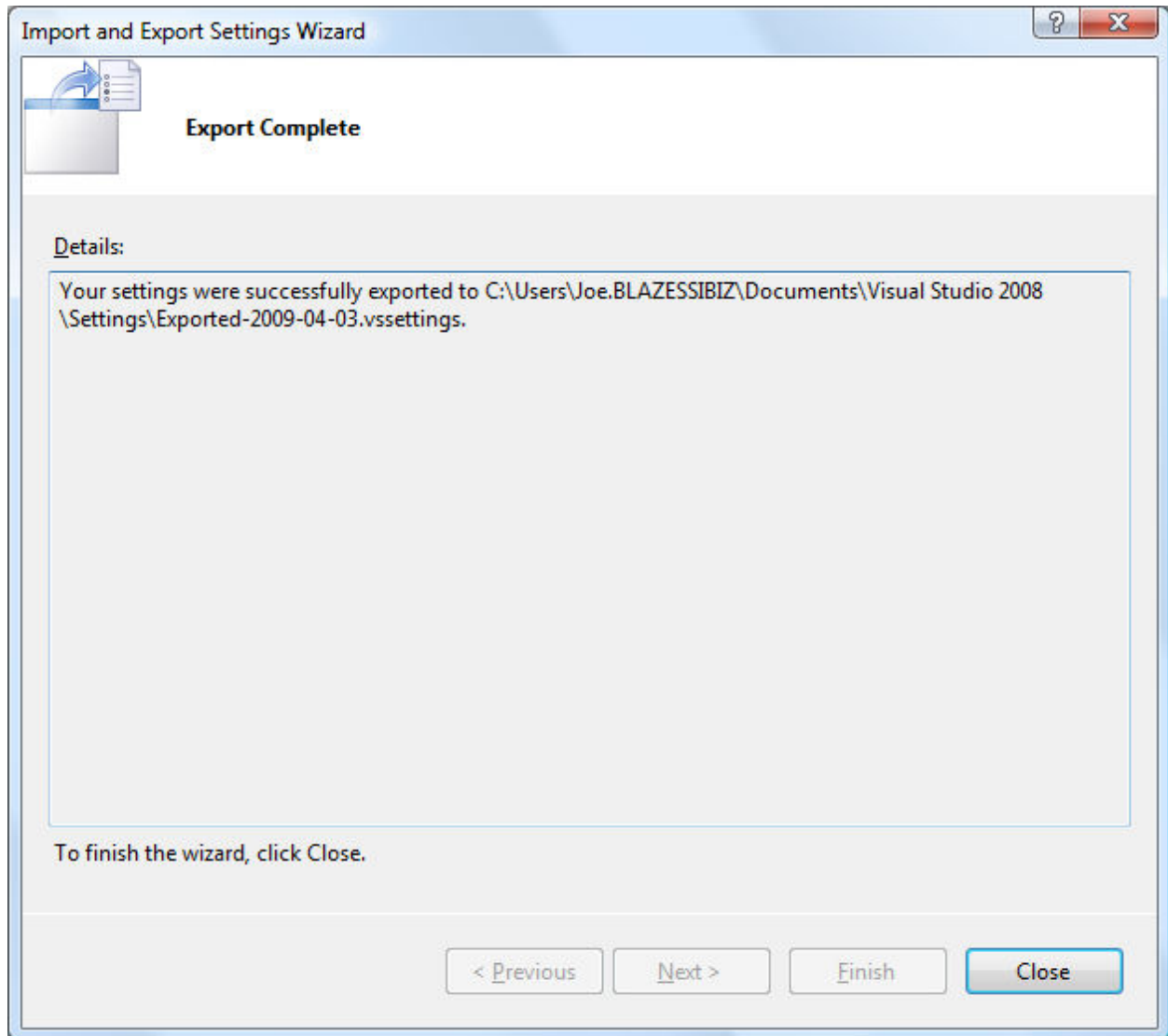
Sore my settings file in this directory:  
C:\Users\Joe.BLAZESSIBIZ\Documents\Visual Studio 2008\Settings

Browse...

< Previous   Next >   **Finish**   Cancel



Browse to the desired location for the exported Visual Studio 2008 settings and provide an appropriate file name to contain them. Click the “Finish” button to display the following dialog:



Importing your customized settings to another copy of Visual Studio 2008 uses analogous dialogs that are accessible from the main form of Visual Studio 2008 at the Tools > Import and Export Settings” menu item. Options within the import dialogs include:

- Save the current settings before importing different settings
- Import Microsoft Visual Studio 2008 default settings
- Import the available, previously-exported custom settings