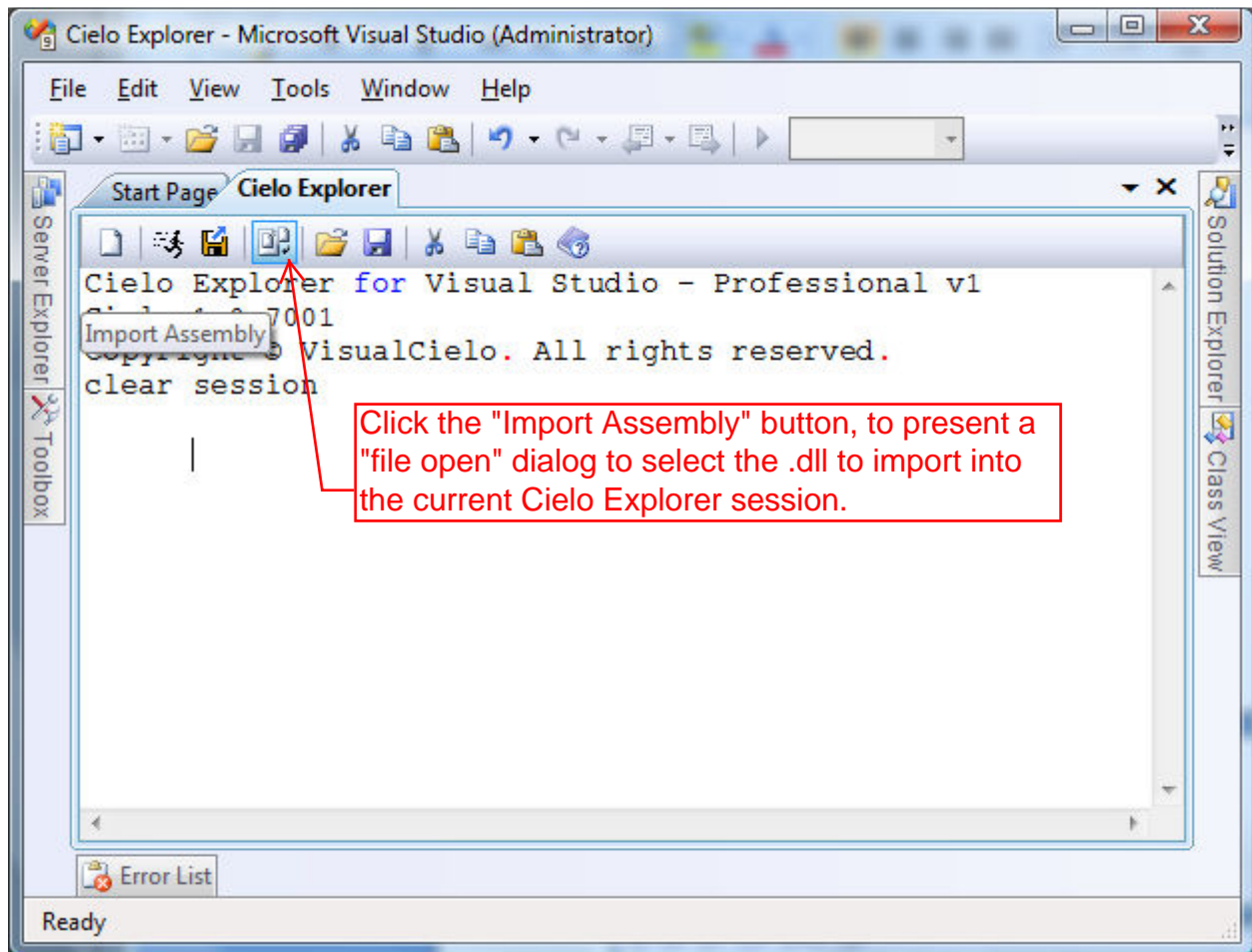


## Accessing A .Net Class Library (.dll) From the VisualAPL Cielo Explorer Session

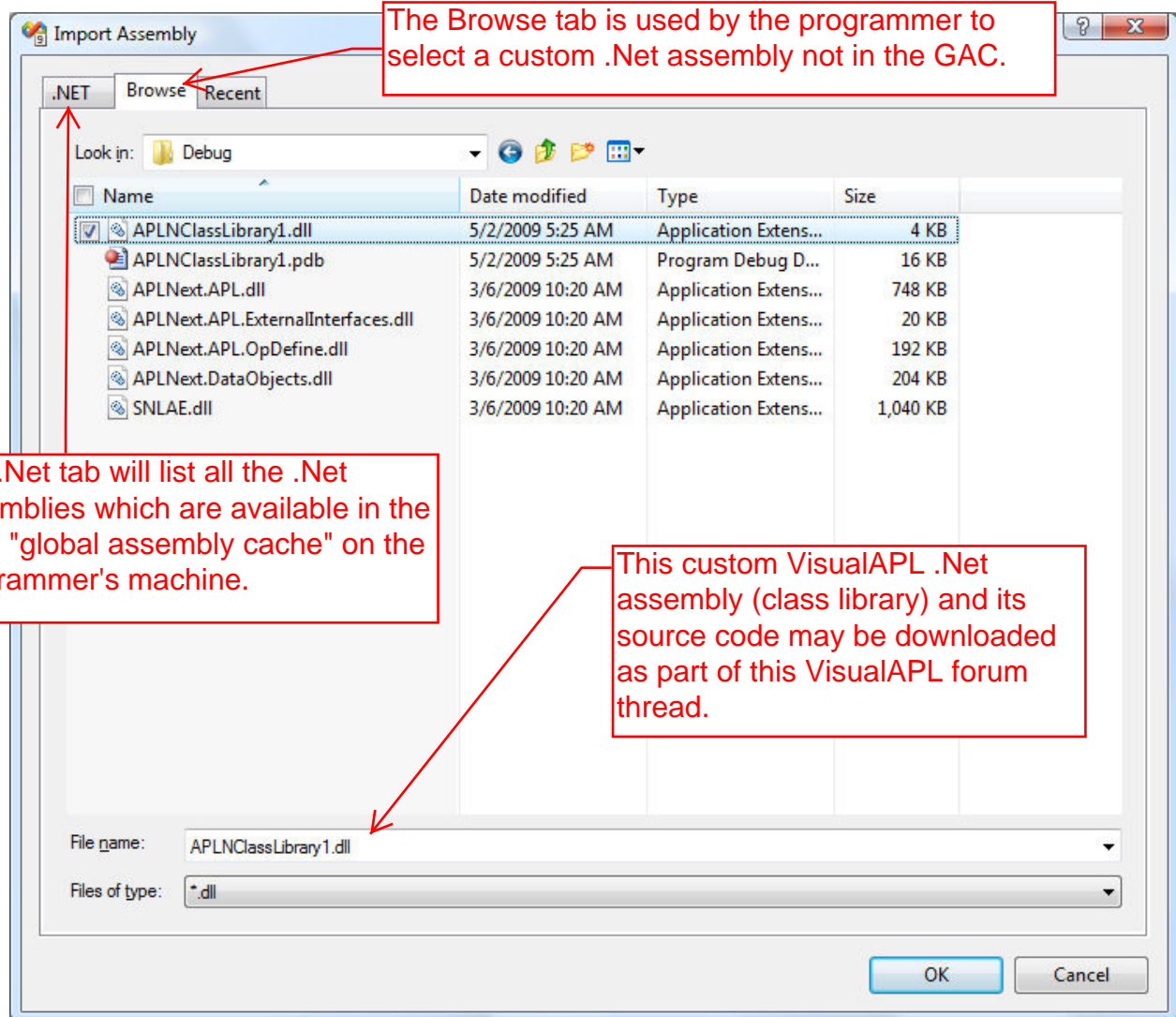
The VisualAPL Cielo Explorer is an immediate-mode, interactive session for learning about .Net, C# and VisualAPL as well as for designing and testing C# and VisualAPL programs for later use in Cielo Explorer scripts or C# or VisualAPL .Net class libraries.

When working in the Cielo Explorer is it sometimes necessary to use other .Net class libraries to access features of .Net or use functions in custom .Net class libraries.

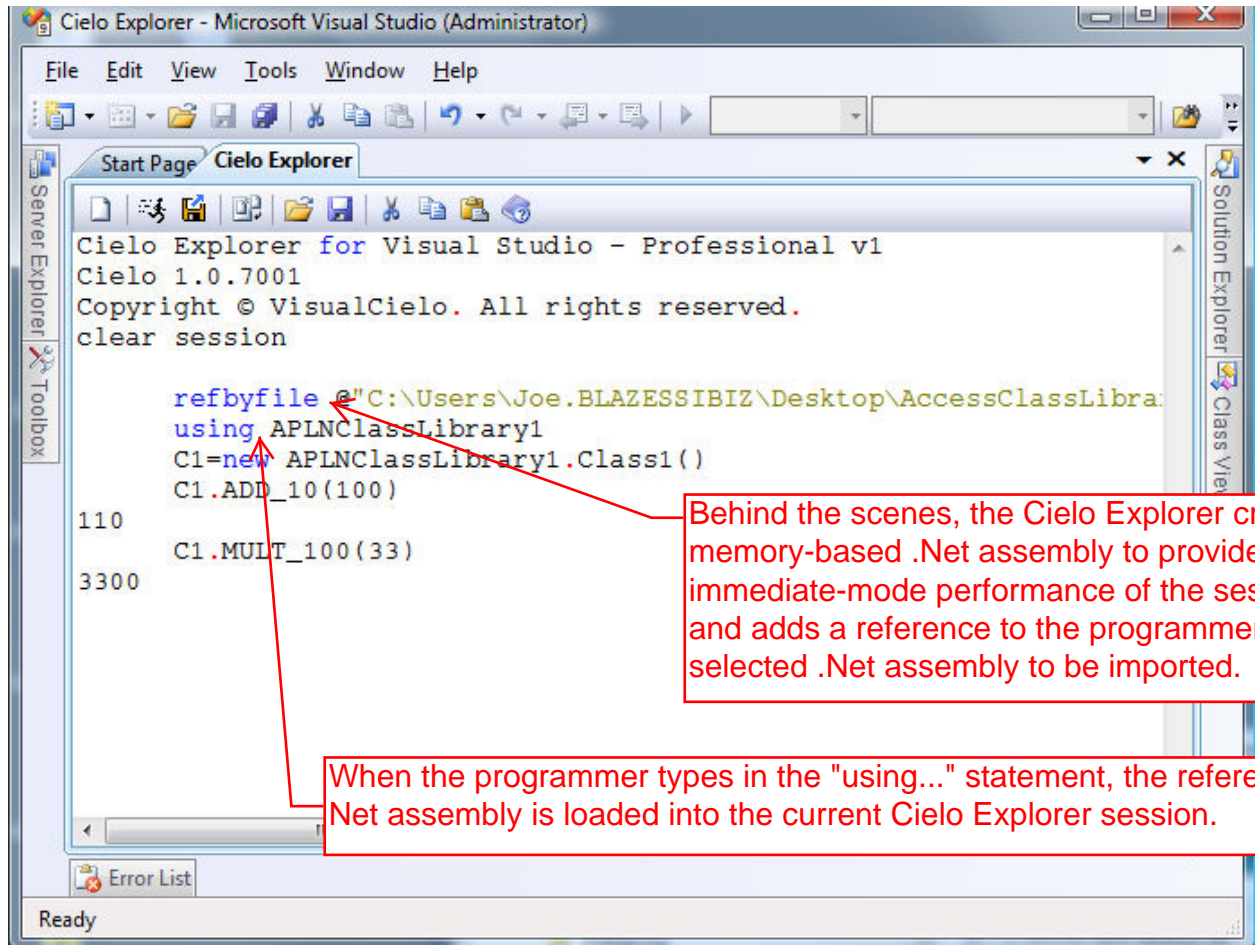
When it is necessary to use types in a custom-build .Net assembly, created for example using VisualAPL, C# or VB.Net and its path is not known or easy to type, the Cielo Explorer "Import Assembly" button (4<sup>th</sup> from the left on the Cielo Explorer tab), is convenient:



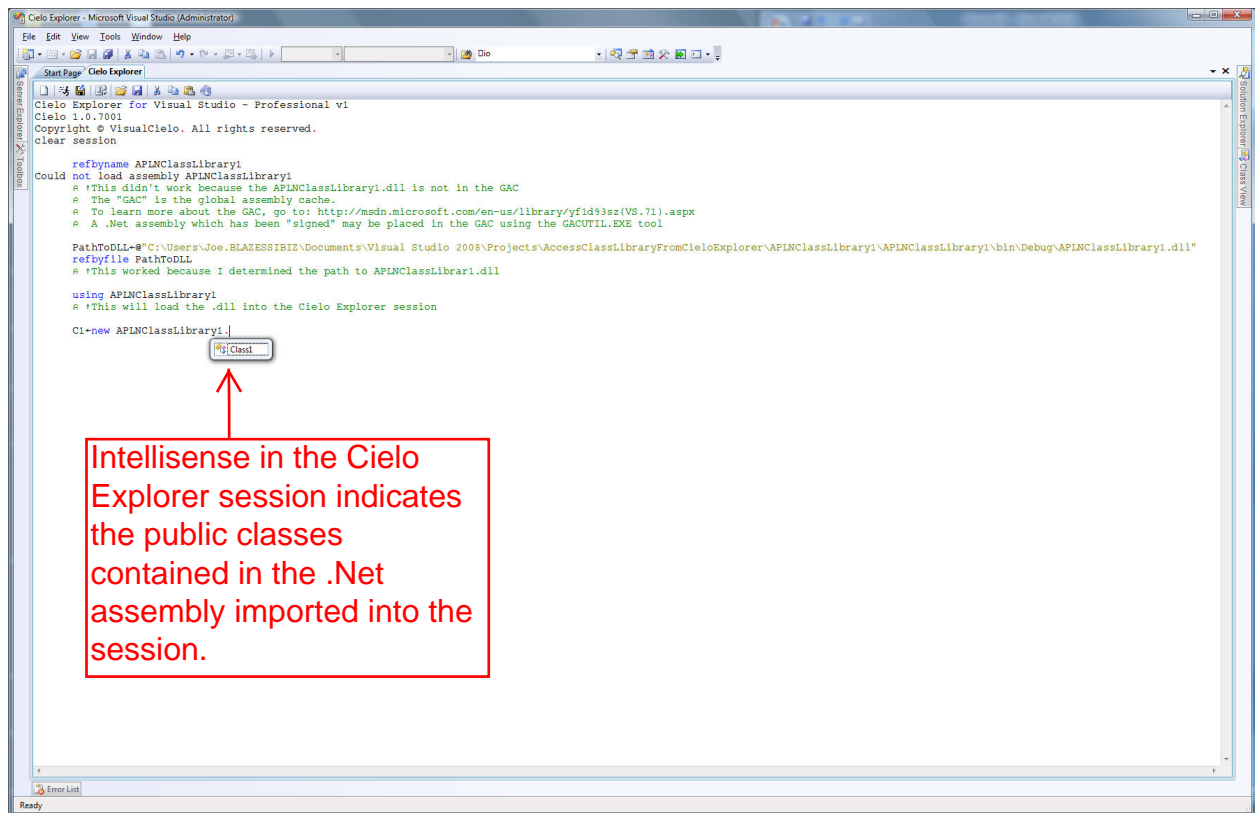
In this case the programmer has browsed to a .Net assembly previously created using VisualAPL. Click the "OK" button to load the assembly:

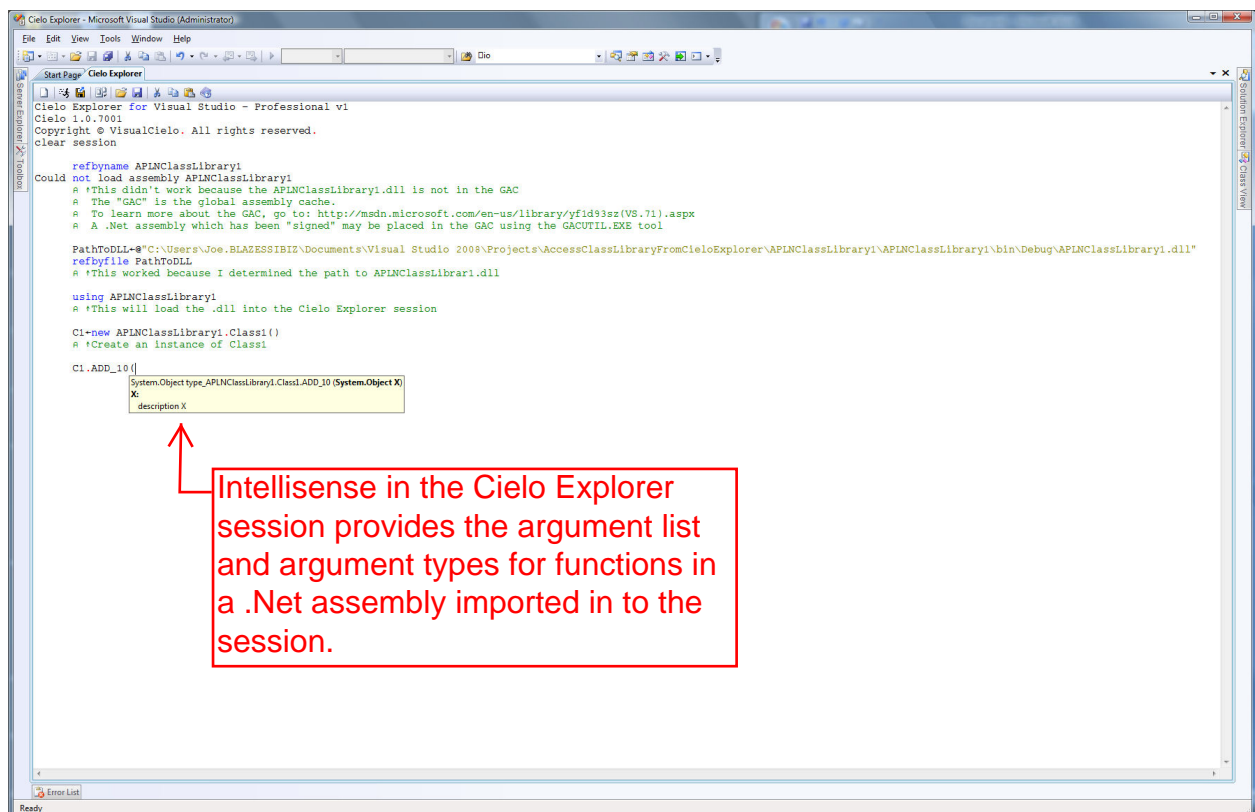
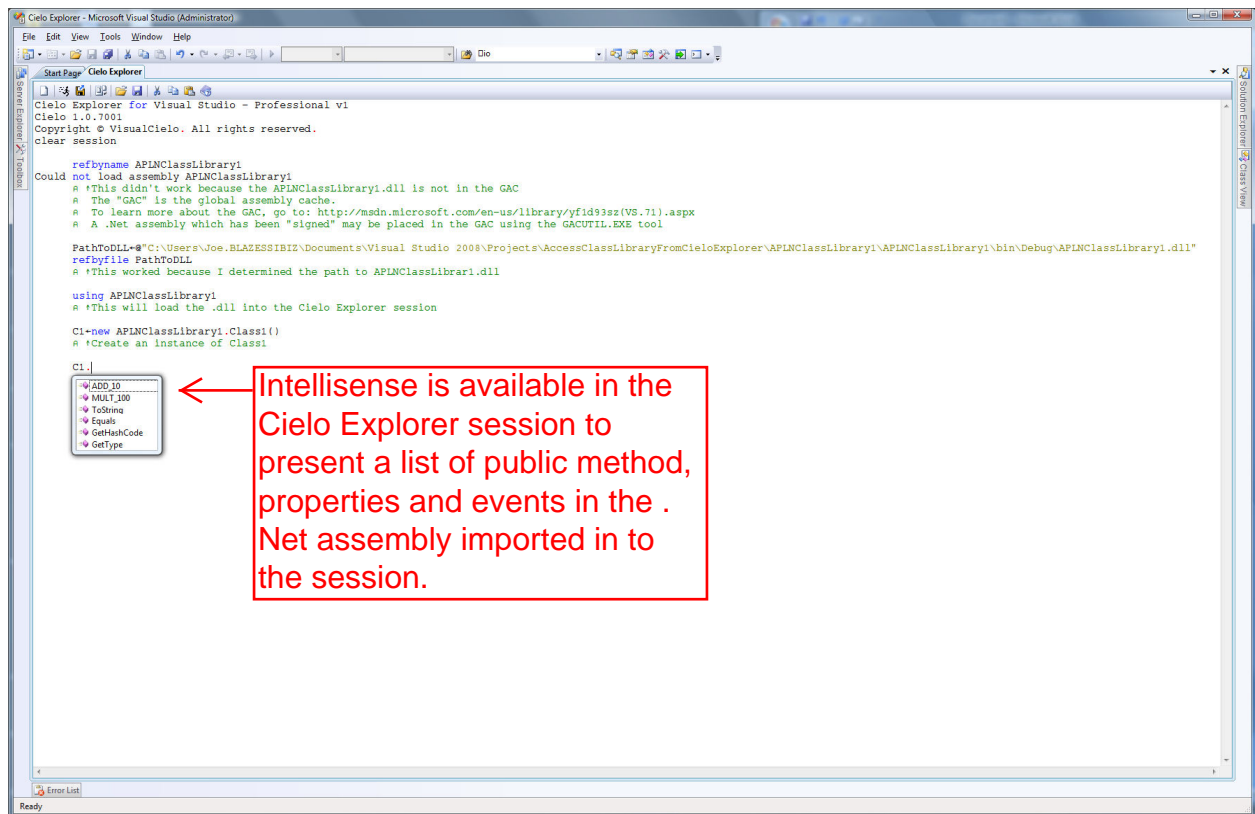


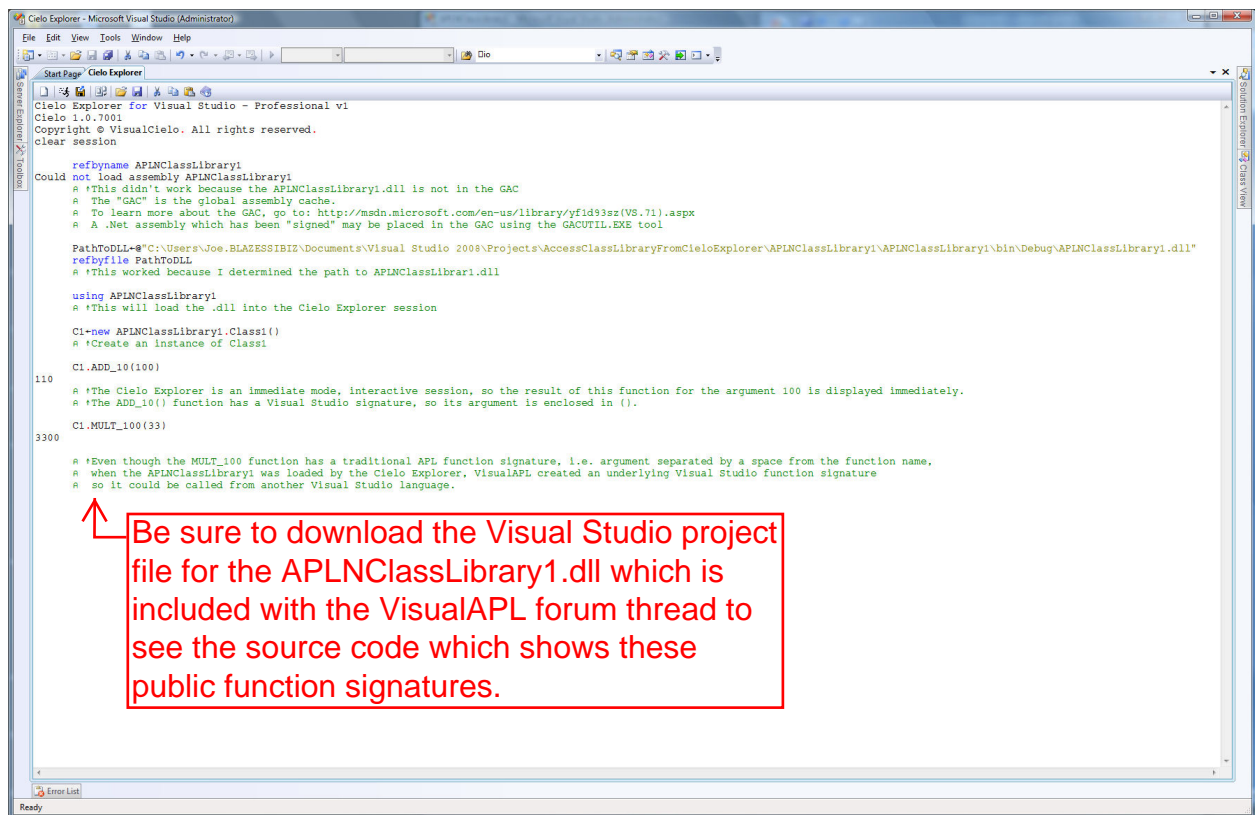
The Cielo Explorer executes the appropriate "refbyfile" statement. The programmer then types in the "using APLNClassLibrary1" to load the assembly in to the Cielo Explorer session. Then an instance of the appropriate class in the assembly is created by the programmer and the appropriate functions within that class are executed:



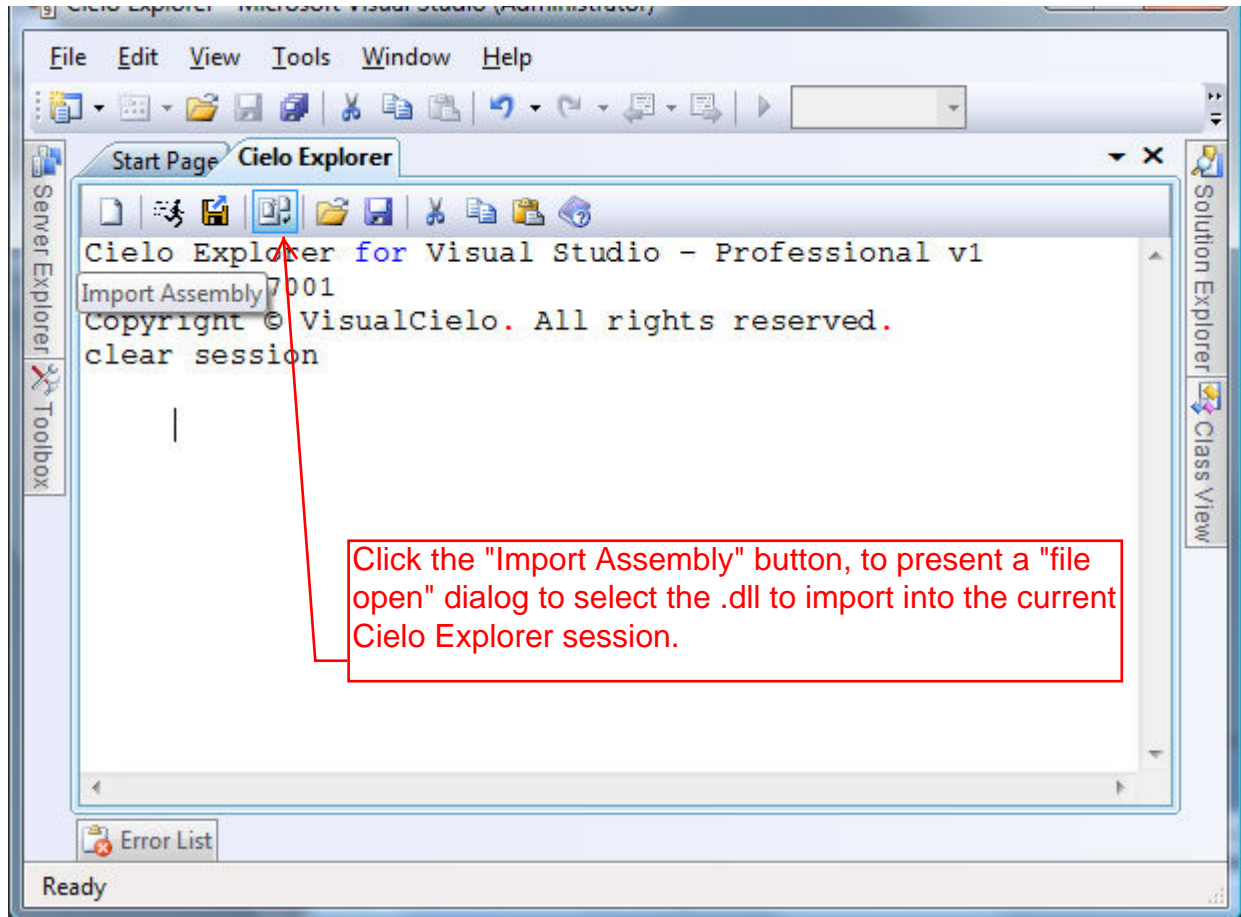
The process of loading a .Net assembly can also be performed manually from the Cielo Explorer session. *Be sure to use the magnifier tool in PdfReader to observe the details highlighted on the following screen captures!*





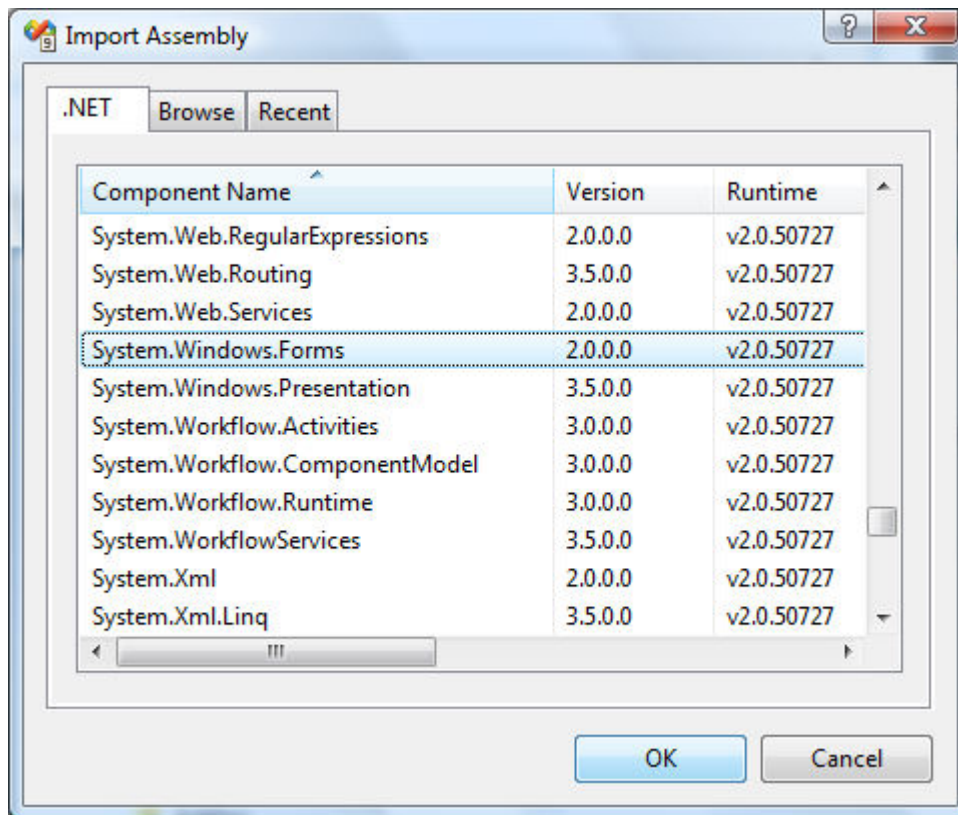


The Cielo Explorer "Import Assembly" button (4<sup>th</sup> from the left on the Cielo Explorer tab), provides for selecting assemblies by browsing to .Net .dll files, GAC assembly names or recent projects:



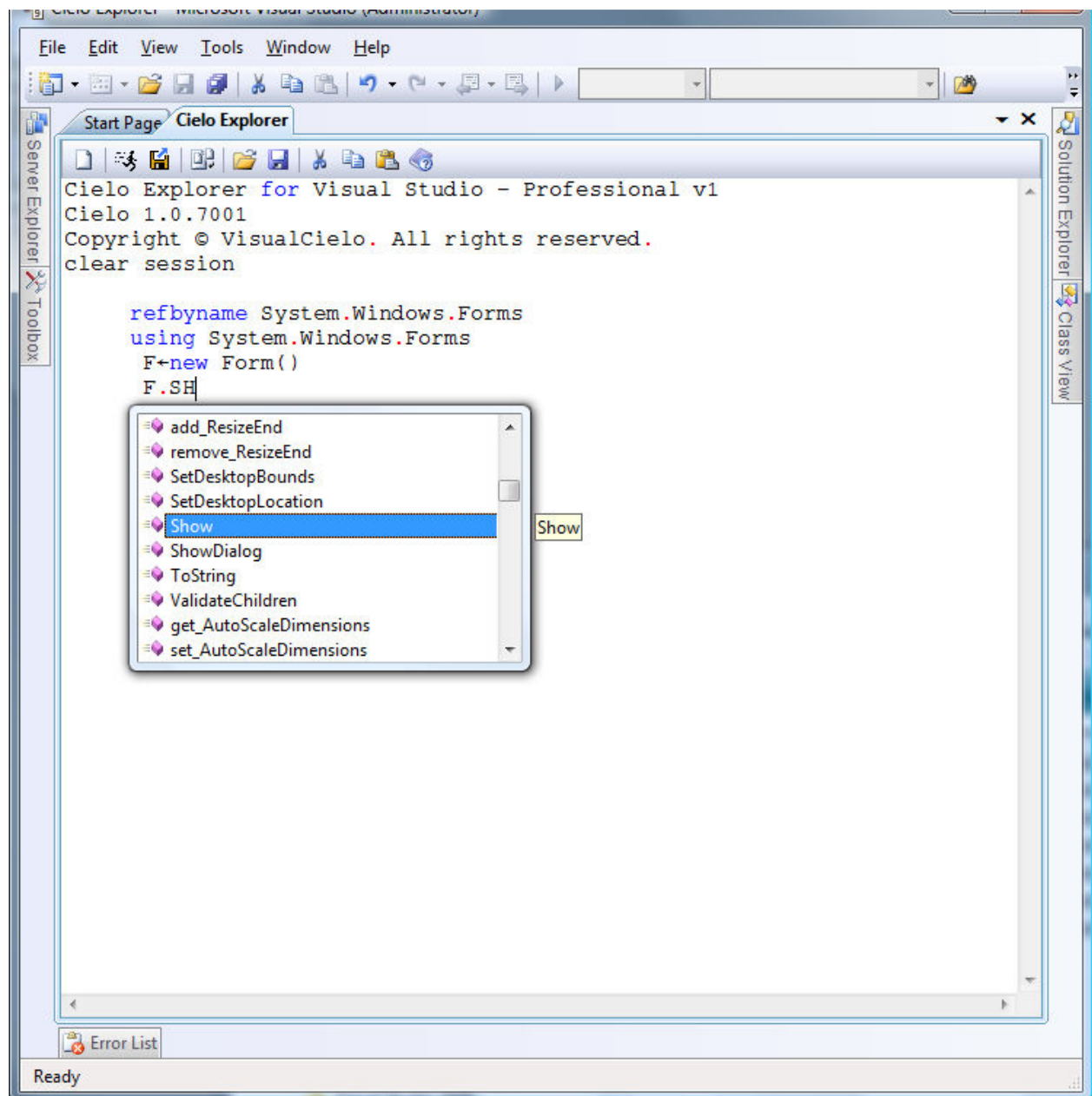


When the “Import Assembly” button of the Cielo Explorer session is clicked by the programmer, the Import Assembly dialog is presented. In this case the .Net assemblies, in the GAC, are browsed and the “System.Windows.Forms” namespace is selected for use in the Cielo Explorer Session:

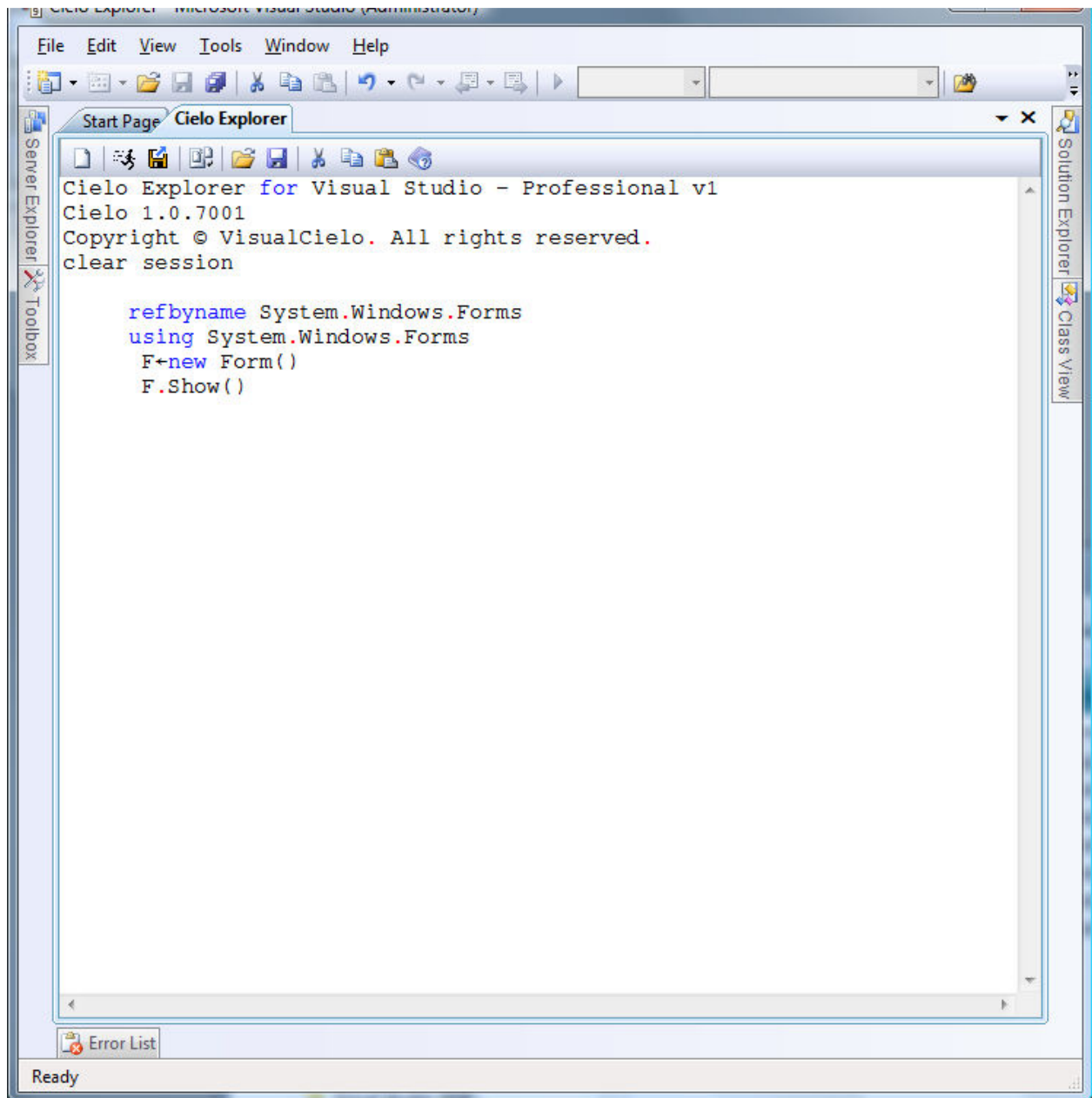




Intellisense in the Cielo Explorer session enables the programmer to easily select the form class properties, methods or events to use:



Now type in, or select from the Intellisense list the statement “F.Show()”, to run the “Show()” method of the form class:



When the statement "F.Show()" is entered into the Cielo Explorer session, the instance of the form is immediately presented on the screen.

