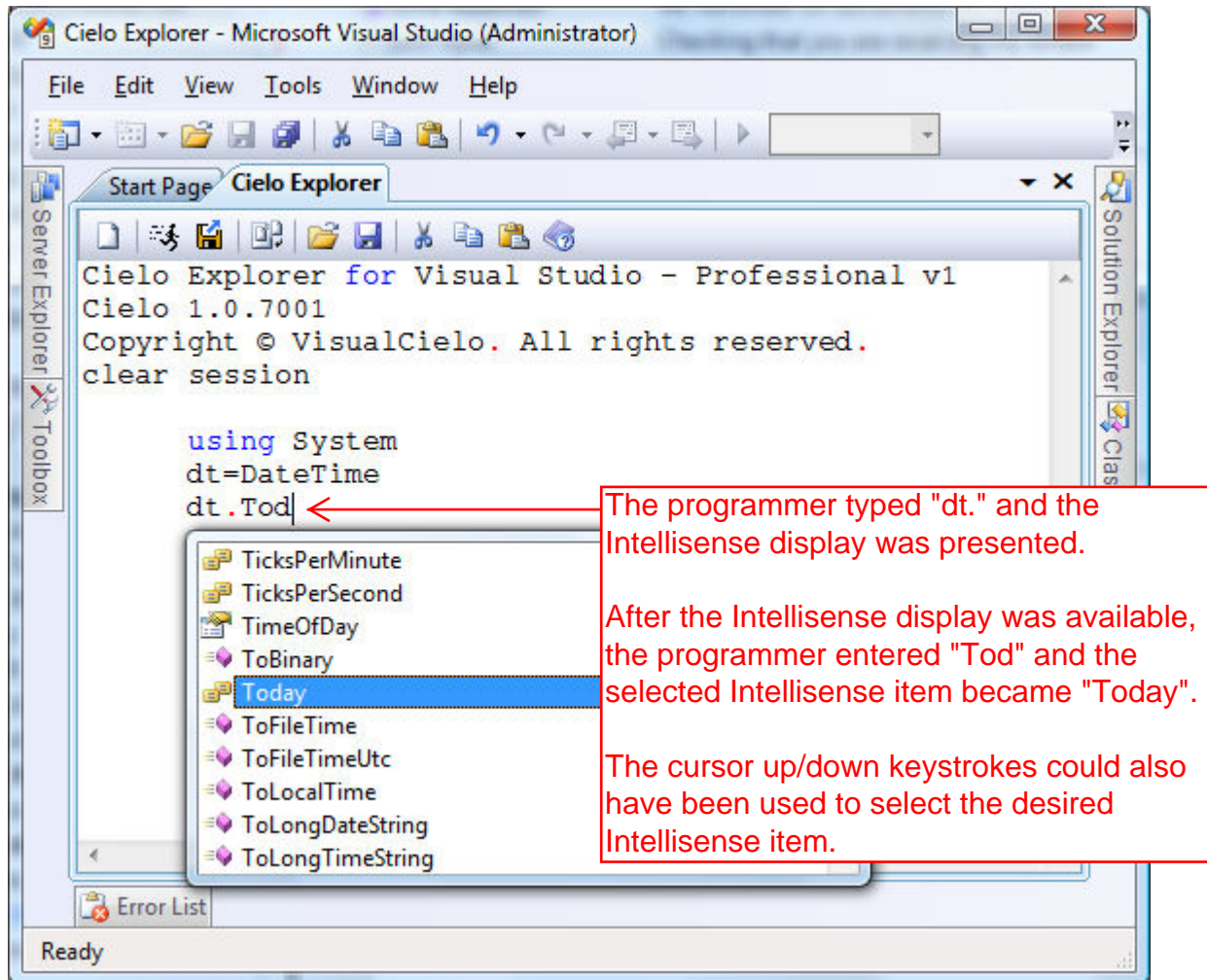


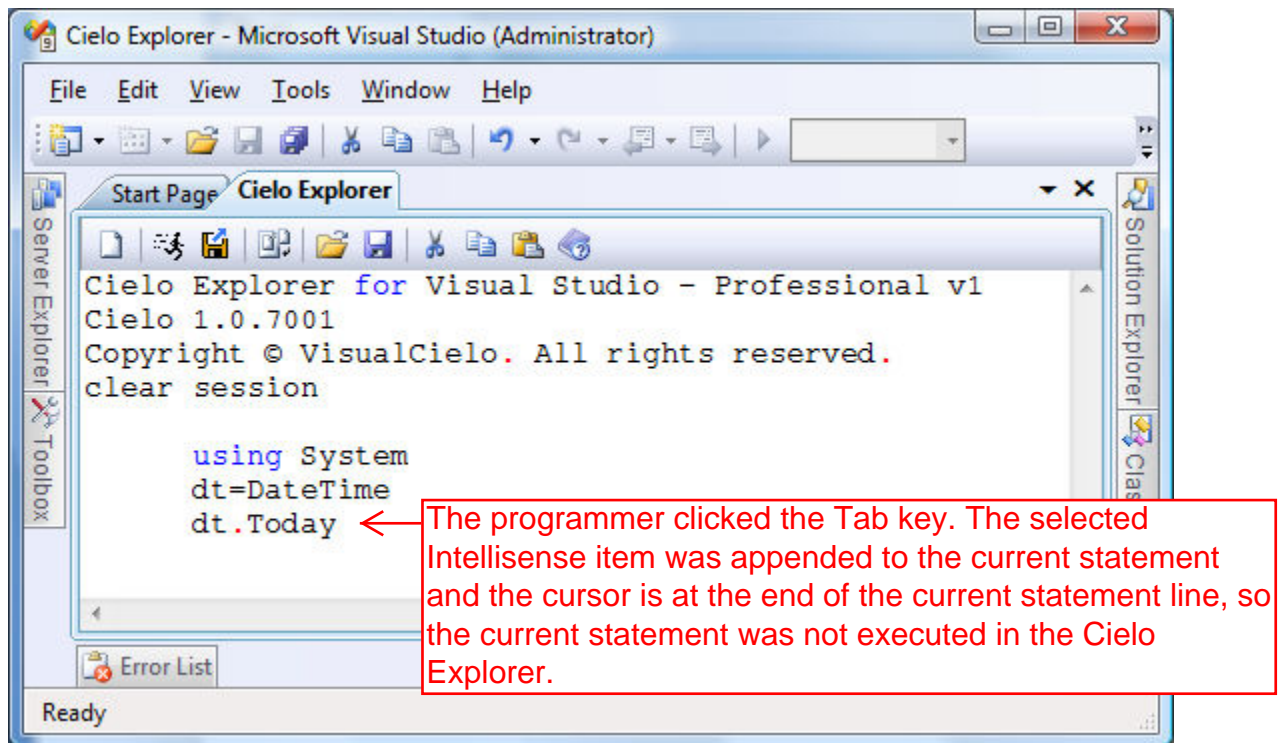
Visual Studio – Intellisense Autocomplete and the Tab Keystroke

When Visual Studio displays Intellisense information and the programmer scrolls using the cursor up/down keystrokes to select the appropriate option, the Tab keystroke may be used to end the Intellisense display and put the selected item into the programming window without moving the cursor to the next program line.



When the programmer clicks the Tab button, the Intellisense display is ended, the selected Intellisense item is appended to the program statement which has already been typed by the programmer and the cursor is placed at the end of the current program statement.

This behavior can be helpful if additional elements are to be added to the current program statement after selecting the current Intellisense item. In addition, note that when the Tab keystroke is used in the immediate-mode VisualAPL Cielo Explorer session, the current program line is not executed. Execution of a program statement occurs in the Cielo Explorer only after an Enter keystroke, which does not occur when the Tab keystroke is used to complete the selection of an Intellisense item.



In the Cielo Explorer clicking the Enter key will attempt to execute the current program statement. Using the Enter keystroke after selecting an Intellisense item will perform the same function as the Tab keystroke plus it will add the Enter keystroke. Cielo Explorer will then execute the statement and the cursor will then be at the beginning of the next (empty) line.

