

Accessing a .Net Class Library (.dll) From the VisualAPL Cielo Explorer Session

The VisualAPL Cielo Explorer is an immediate-mode, interactive session for learning about .Net, C# and VisualAPL as well as for designing and testing C# and VisualAPL programs for later use in Cielo Explorer scripts or C3 or VisualAPL .Net class libraries.

Statements to load .Net class libraries may be included in a Cielo Explorer script. The basic statements to use are the same as those available in the Cielo Explorer session:

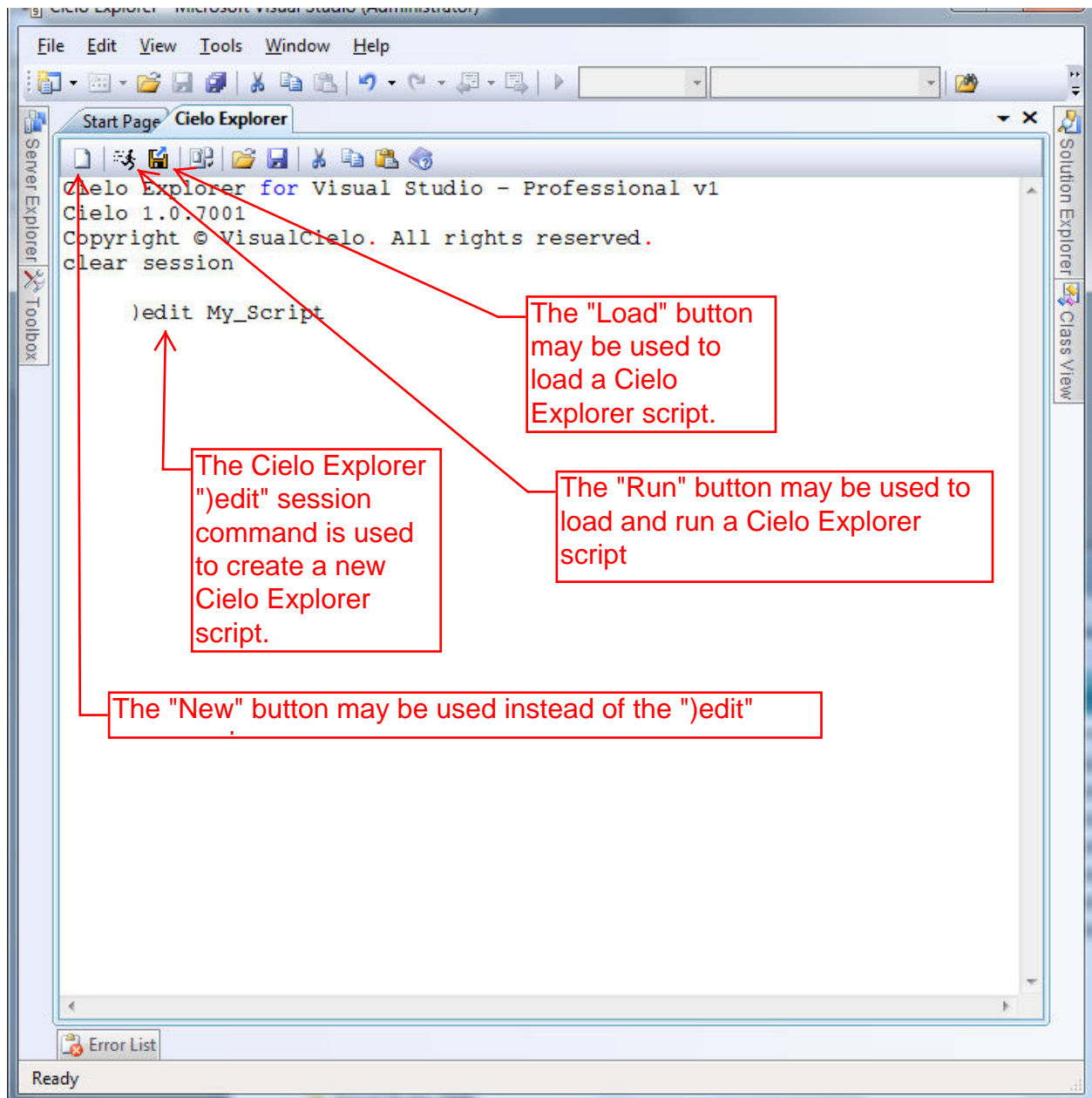
- “refbyname” to create a reference to a .Net class library which is in the GAC (global assembly cache).
- “refbyfile” to create a reference to a .Net class library which is located at a programmer-defined file path.
- “using” to load the assembly in the .dll into the Cielo Explorer session.
- For “late-binding” of .Net assemblies, the VisualAPL `␣reference` and `␣using` statements are available.

Cielo Explorer scripts may be saved, edited, updated, loaded and run in the Cielo Explorer session. Cielo Explorer scripts may contain any number of variable assignments and functions (both traditional APL operator signature functions and C# signature functions). Multiple Cielo Explorer scripts may be loaded into the same Cielo Explorer session.

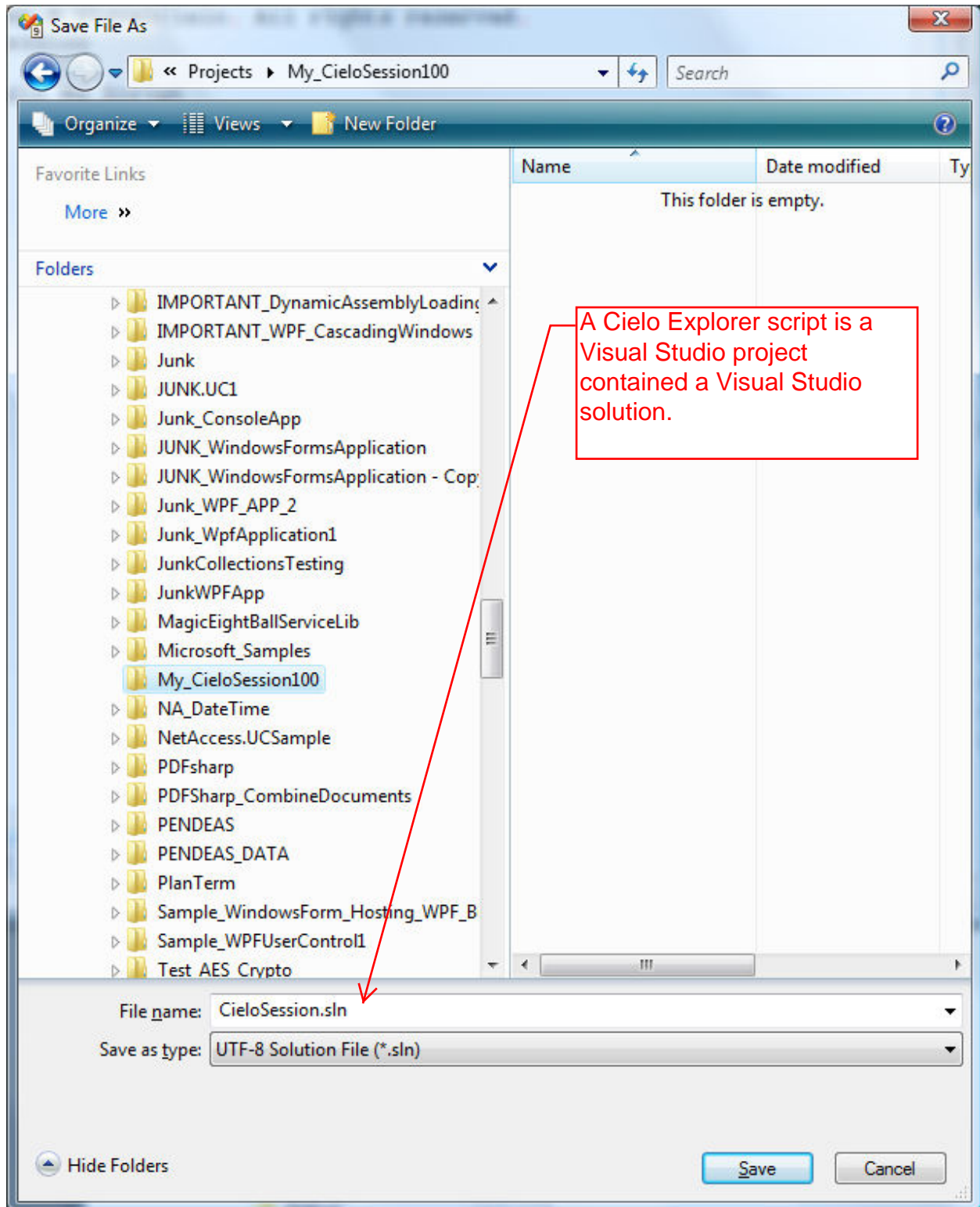
In the Cielo Explorer session, session commands and quad-functions may be used. Refer to the documentation which was installed when VisualAPL was installed for additional details.

- `)cd`, `)classes`, `)clear`, `)edit`, `)fns`, `)load`, `)off`, `)run`, `)runf`, `)scripts`, `)vars`, `)xload`, `)xmlout` are Cielo Explorer session commands.
- Tradition APL quad-functions, such as `␣idlist`, `␣ex`, `␣nc` and `␣nl` are also available.

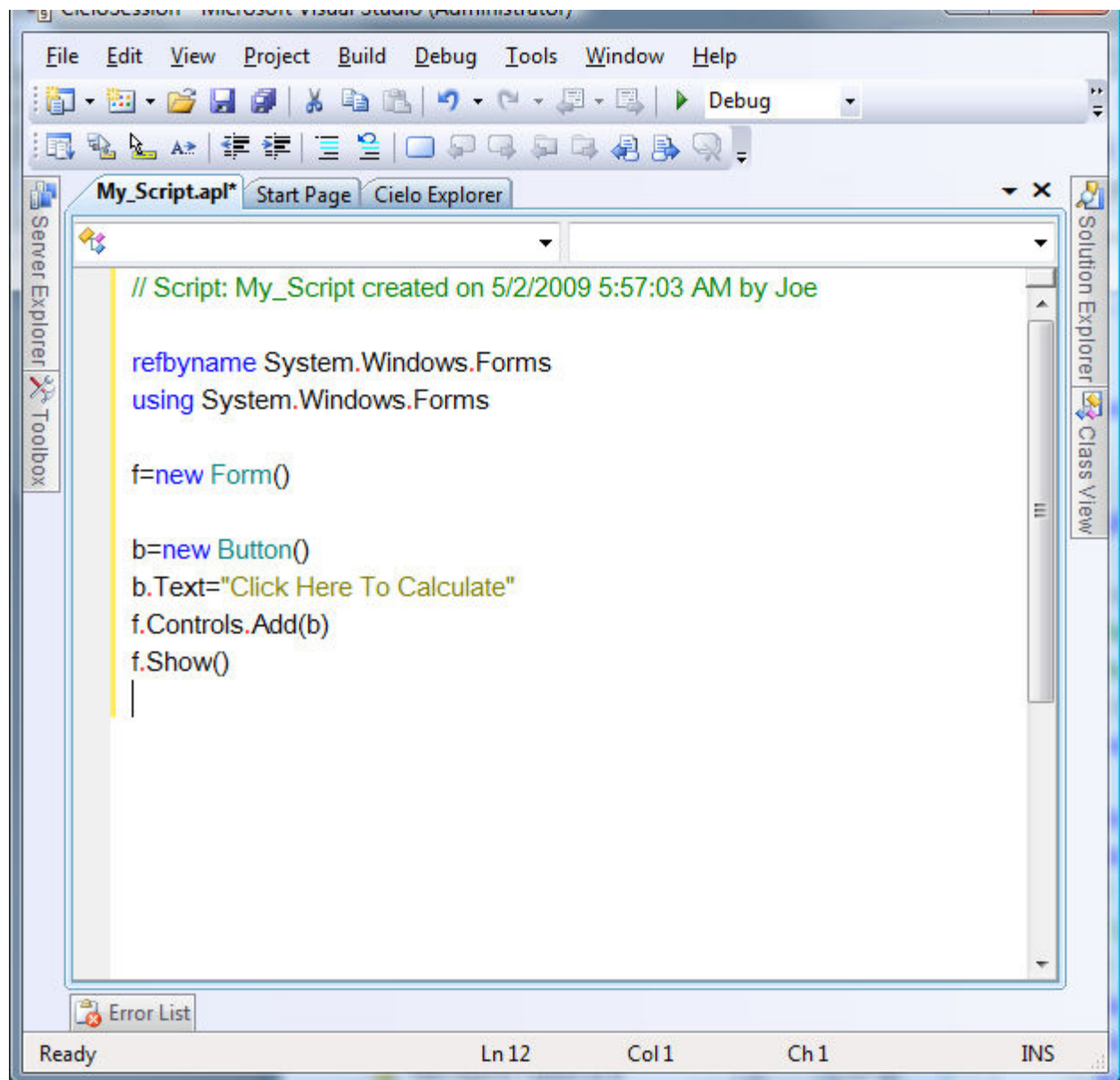
To create a Cielo Explorer script, use the “)edit ...” command from the Cielo Explorer immediate-mode, interactive session:



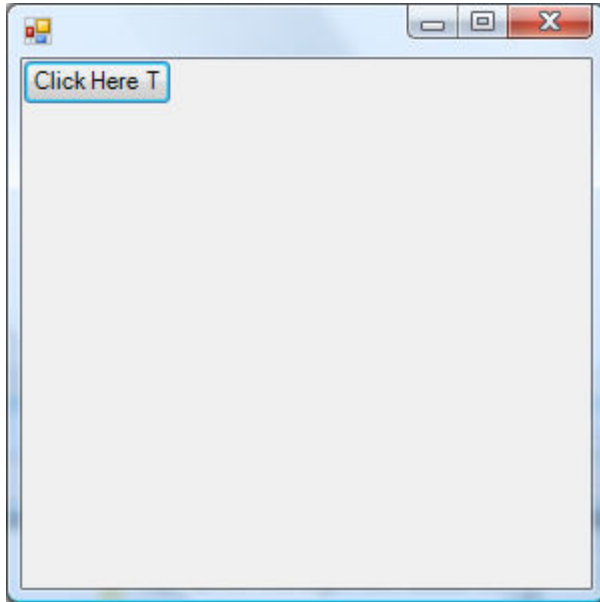
The Save As dialog is displayed so that the programmer may select the appropriate location to save the script:



Typing in the program into the script is easy. Intellisense is available during script editing.



When the Cielo Explorer script is run the form is displayed. Much more elaborate Cielo Explorer scripts can be developed which are effectively application systems, performing useful calculations and presenting output in a cosmetic manner. This type of desktop solution is ideal for the practicing professional engineer, scientist or actuary.



Use the Visual Studio “File > Save My Script” menu item to save the Cielo Explorer script so that it can be reloaded, edited and re-run. Saving Cielo Explorer sessions into Cielo Explorer scripts is very convenient. They can be recalled at any time for additional modification or study. Multiple scripts may be loaded simultaneously into the Cielo Session.