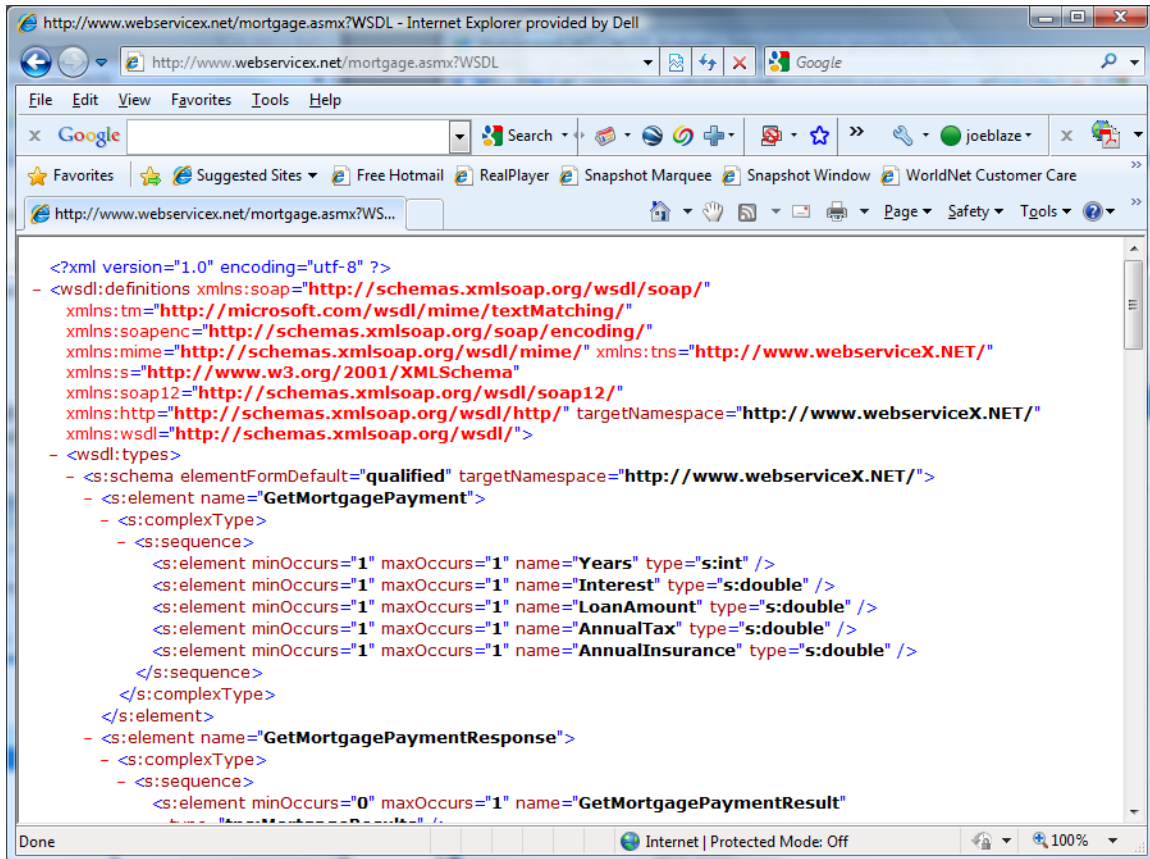


## WebService (with wsdl) Accessed by APLNext WebTransfer

When a web service is specified by a wsdl xml-format document it is necessary to analyze the wsdl document to ascertain the method available. See here for more information on wsdl: <http://www.w3.org/TR/wsdl>.

A sample web service using a wsdl is found at:

<http://www.webservicex.net/mortgage.asmx?WSDL>



In this case the web site of this sample web service provided it own wsdl analyzer available at: <http://www.webservicex.net/WCF/WSDLAnalyser.aspx> The wsdl analyzer provided the following information about the GetMortgagePayment method.;

WebServiceX.NET :: WSDL Analyzer - Internet Explorer provided by Dell

http://www.webserviceX.net/WCF/WSDLAnalyser.aspx

File Edit View Favorites Tools Help

Google Search

WebServiceX.NET :: WSDL Analyzer

14-Aug-2009

Home Web Services Tools Support Contact

Business and Commerce

Communications

Standards and Lookup Data

Graphics and Multimedia

Other Web Services

Utilities

Value Manipulation / Unit Convertor

### WSDL Analyzer

WSDL

Analyse

#### Mortgage

Endpoint: <http://www.webserviceX.net/mortgage.asmx>

Description:

#### Operations

GetMortgagePayment  
GetMortgagePayment  
GetMortgagePayment

#### GetMortgagePayment

Request:  
parameters :

Response:  
parameters :

#### GetMortgagePayment

Request:  
Years : s:string  
Interest : s:string  
LoanAmount : s:string  
AnnualTax : s:string  
AnnualInsurance : s:string

Response:  
Body :

#### GetMortgagePayment

Request:  
Years : s:string  
Interest : s:string  
LoanAmount : s:string  
AnnualTax : s:string  
AnnualInsurance : s:string

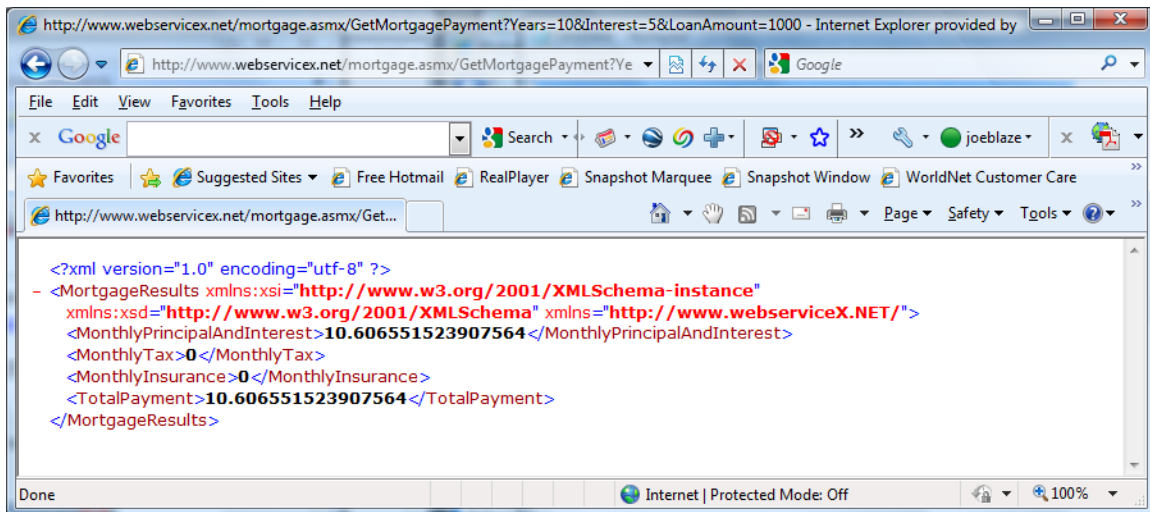
Response:  
Body :

©2009 WebserviceX.NET . All rights reserved.

Internet | Protected Mode: Off

Using the information contained in the wsdl, an http request may be formulated. Such a request is composed of a base url: <http://www.webserviceX.net/mortgage.aspx> and a virtual path associated with the web service method: `/GetMortgagePayment?Years=10&Interest=5&LoanAmount=1000&AnnualTax=0&AnnualInsurance=0`

Since not much data is required by the `GetMortgagePayment` method of the web service, the http request may be executed using a browser:



<http://forum.apl2000.com/viewtopic.php?t=431>.

### GetMortgagePayment method:

APL+Win - [Clear WS]

File Edit View Objects Walk Tools Options Window Help

```

      '#Dwi 'XInfo' 'APL2000'
APL2000.Draw      ActiveControl Display Control
APL2000.Grid      ActiveControl APL2000 Grid Control
APL2000.Grid.1    ActiveControl APL2000 Grid Control
APL2000.RegKey    ActiveObject RegKey Class
APL2000.RegKey.1  ActiveObject RegKey Class
APL2000.WebTransfer ActiveObject APL2000.Utilis.WebTransfer.WebTransfer
      wt='wt'Dwi 'Create' 'APL2000.WebTransfer'
      wt Dwi 'XOpen' 'http://www.webservicex.net/mortgage.asmx'
0 opened
      X=wt Dwi 'XSend' 'GetMortgagePayment?Years=10&Interest=5&LoanAmount=1000&AnnualTax=0&AnnualInsurance=0' ''
      1>X
0 A+1st element of the result indicates no error in the transmission of the http request to the open base url
      2>X A+The 2nd element of the result provides the result of the http request
<?xml version="1.0" encoding="utf-8"?>

<MortgageResults xmlns:xsi="http://www.w3.org/2001/XMLSchema-instance" xmlns:xsd
="http://www.w3.org/2001/XMLSchema" xmlns="http://www.webserviceX.NET/">

  <MonthlyPrincipalAndInterest>10.606551523907564</MonthlyPrincipalAndInterest>

  <MonthlyTax>0</MonthlyTax>

  <MonthlyInsurance>0</MonthlyInsurance>

  <TotalPayment>10.606551523907564</TotalPayment>

</MortgageResults>

      A *The result of the http request is an xml-format document providing the calculation results
  
```

Ready 10 9 NUM

<http://msdn.microsoft.com/en-us/library/aa468547.aspx>.

<http://forum.apl2000.com/viewtopic.php?t=43>.