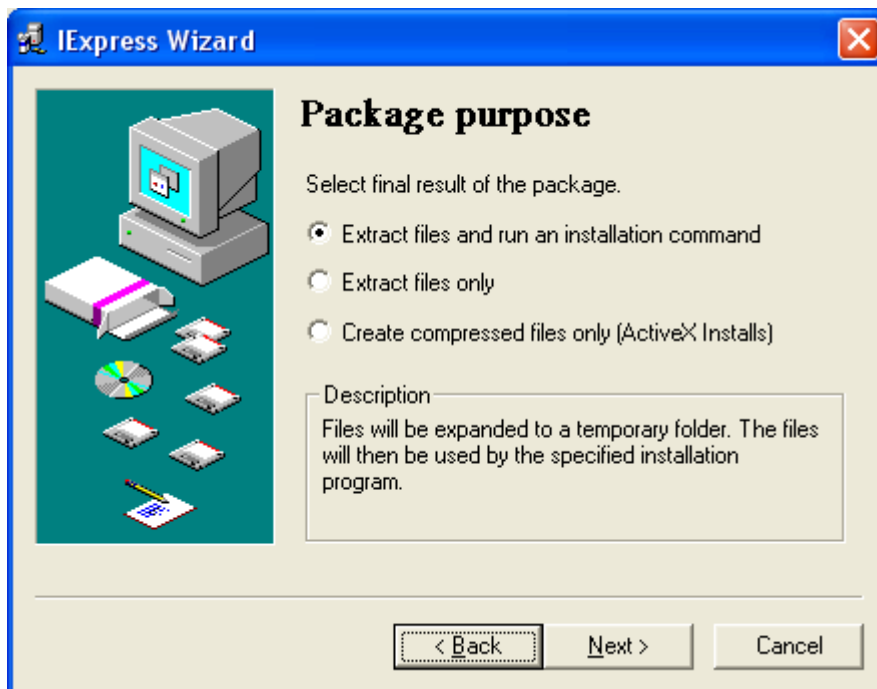


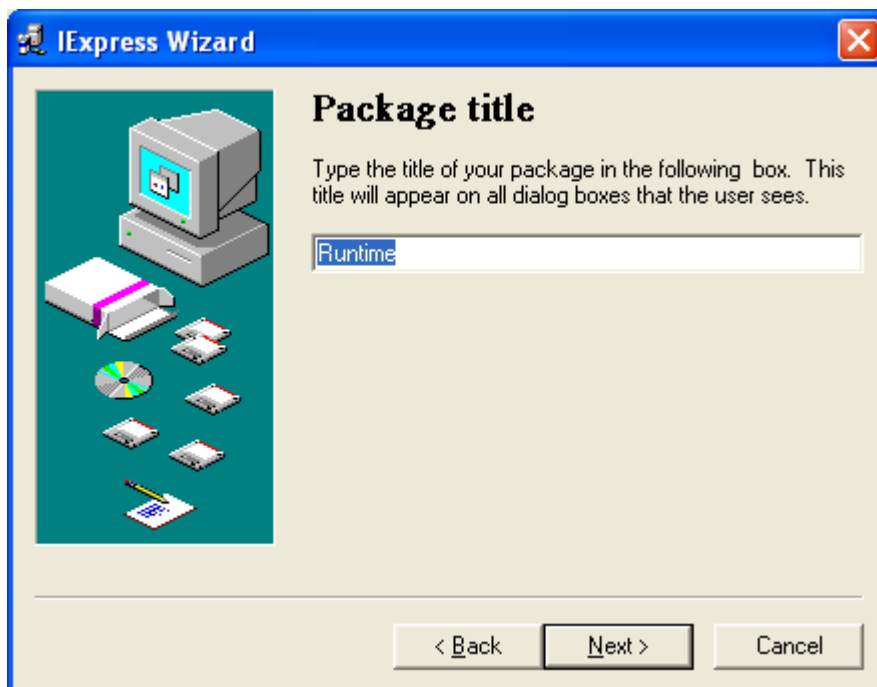
Using the IExpress Wizard with APL+Win

Click Start then Run and in Open box enter **iexpress.exe**.



Set package option to “Extract files and run an installation command”.

Press Next.



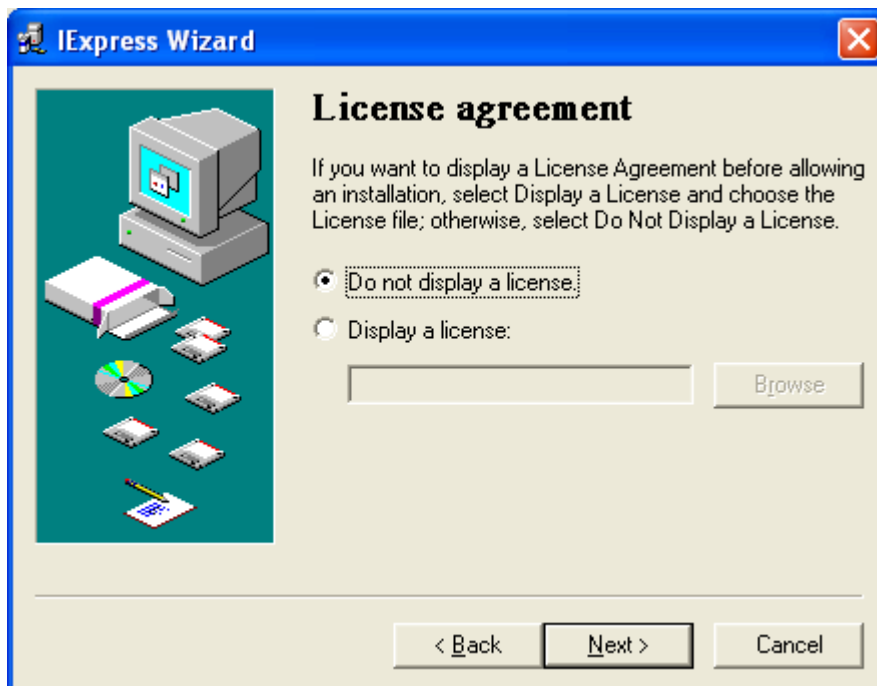
Set a package title to whatever you desire (note: contrary to the instructions, the title will not appear in the dialog box).

Press Next.



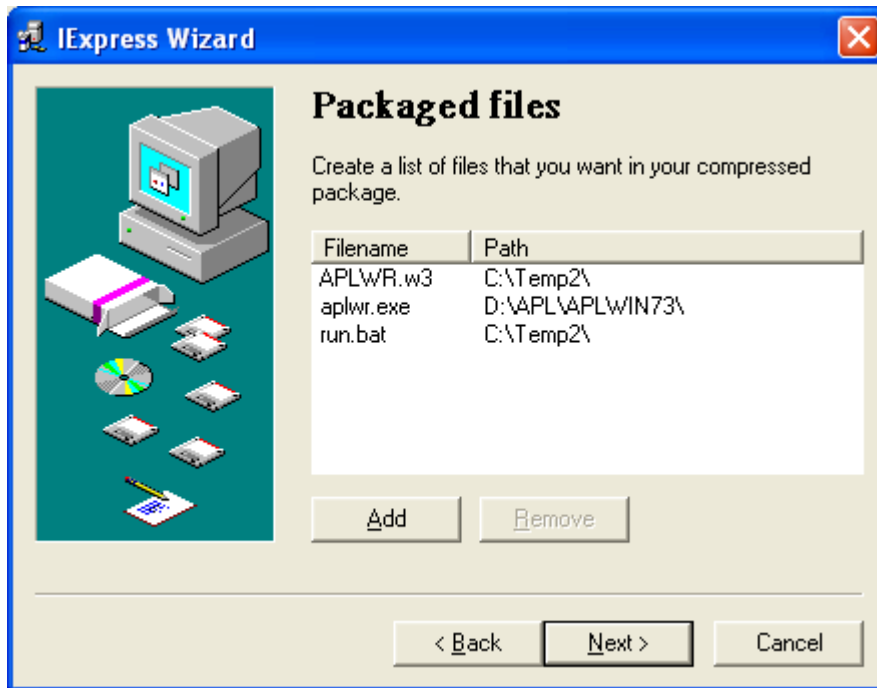
Set confirmation prompt to “No prompt.”

Press Next.



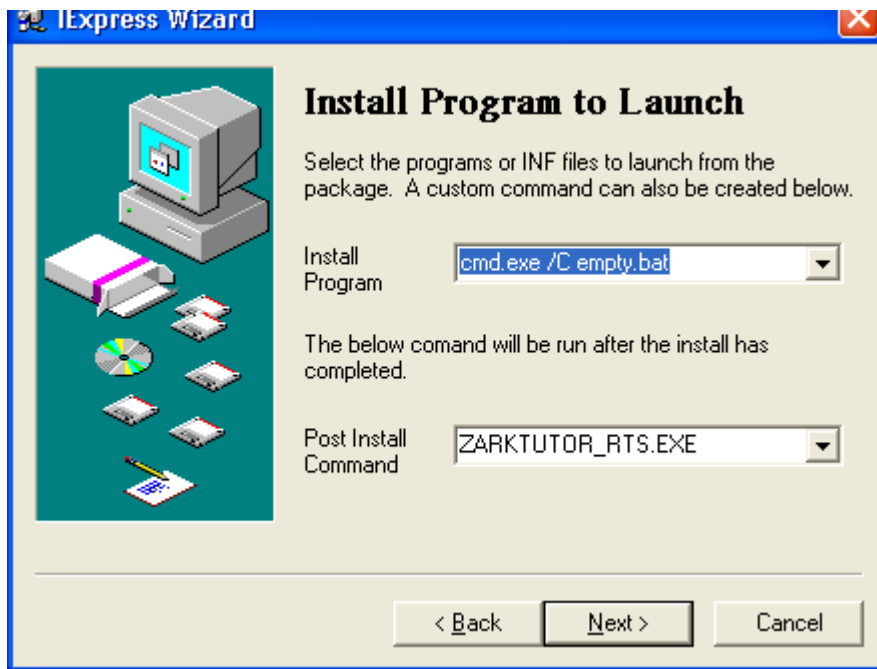
Set License agreement to “Do not display a license”.

Press Next.



Click Add to add files to your compressed package. This should include the runtime executable (aplwr.exe), the runtime workspace (aplwr.w3) and run.bat (this is an empty file used in the next step). The runtime executable and workspace should have the same first name. This will permit the workspace with the same name to autoload when the executable starts.

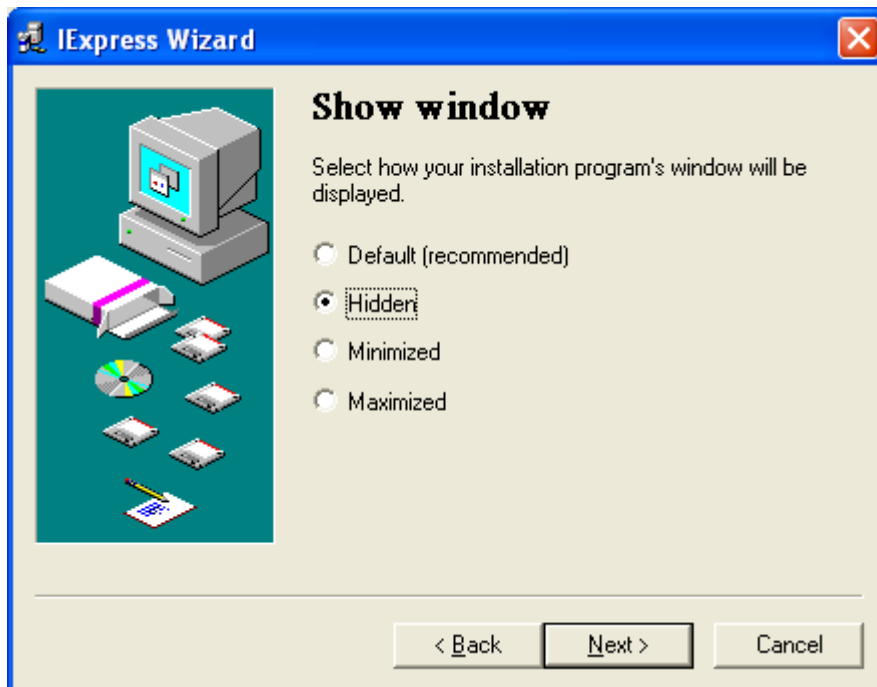
Press Next.



Set Install Program to “cmd.exe /c run.bat” that when run does nothing.

And set Post Install Command to aplwr.exe that when run automatically loads aplwr.w3.

Press Next



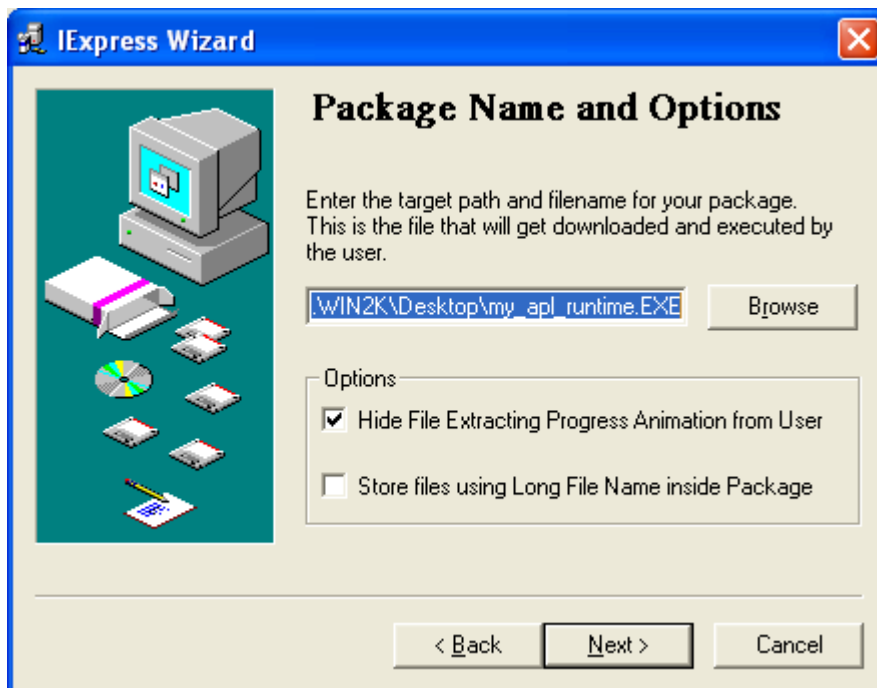
Set Show window to “Hidden”. This will suppress the DOS window from appearing when running run.bat.

Press Next.



Set finish message to “No message.”

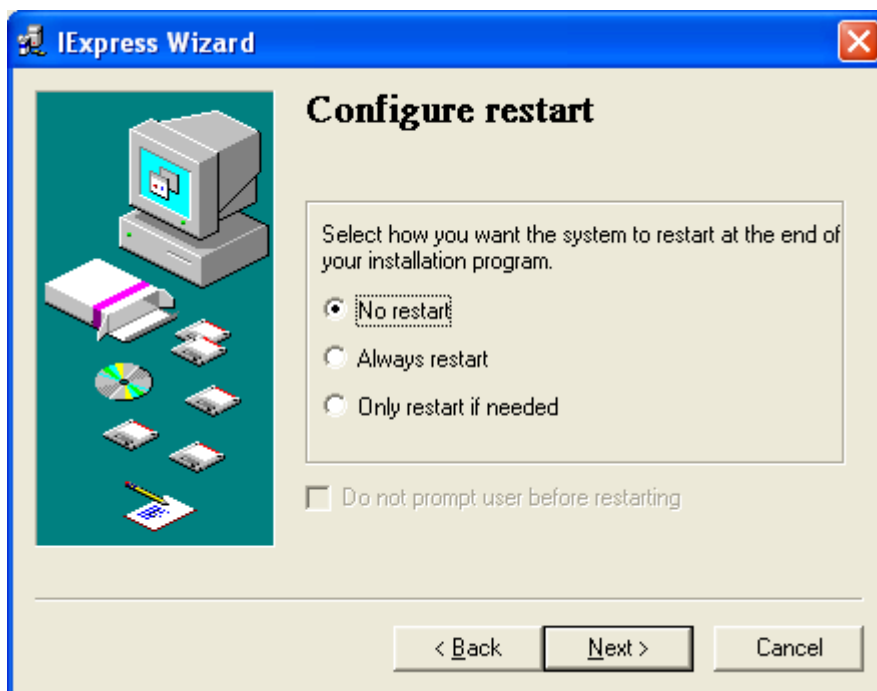
Press Next



Set the executable file name for the package.

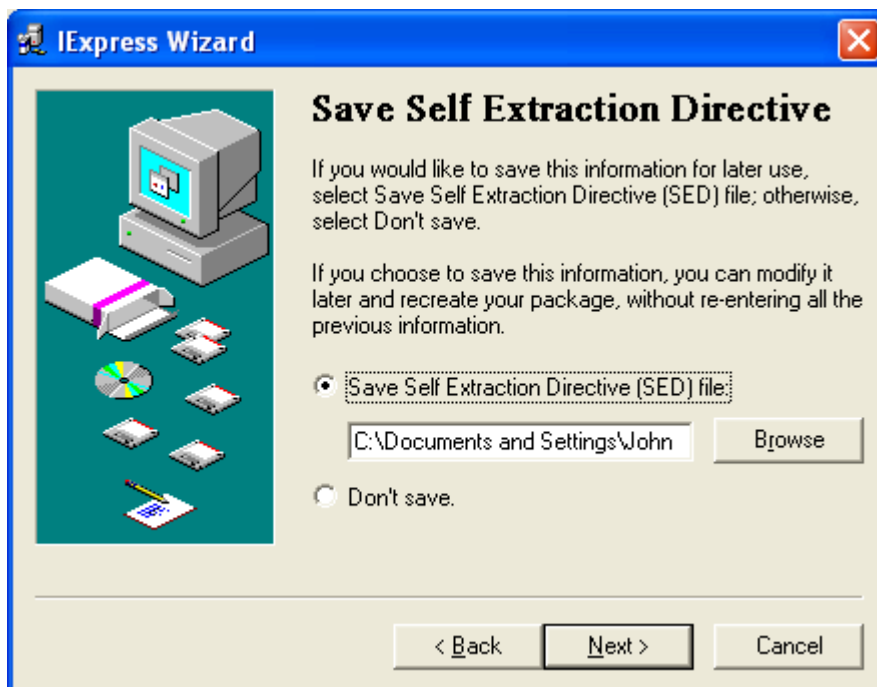
And enable the “Hide File Extracting Progress Animation from User” option.

Press Next



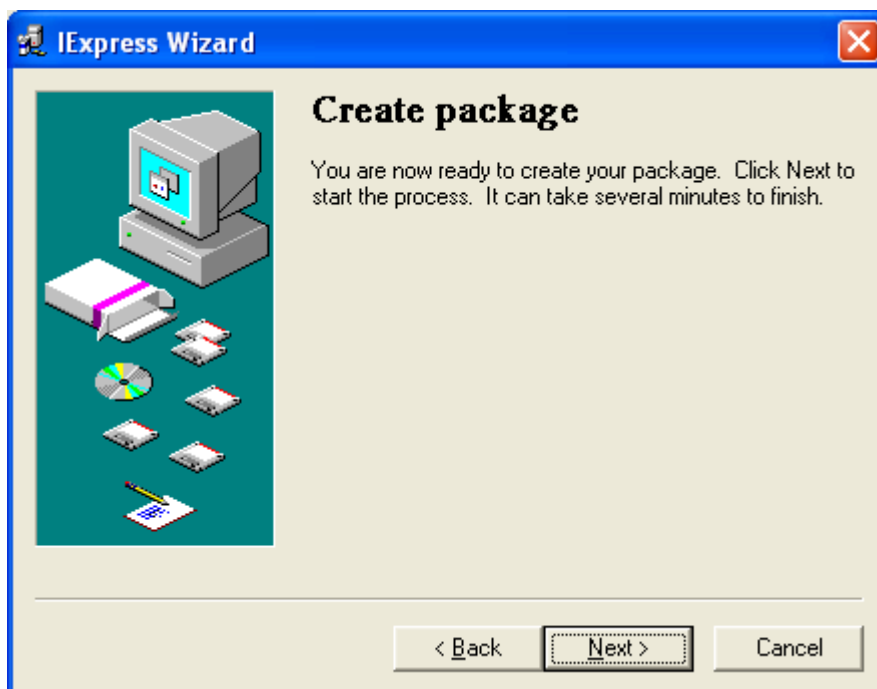
Set “No restart” option.

Press Next

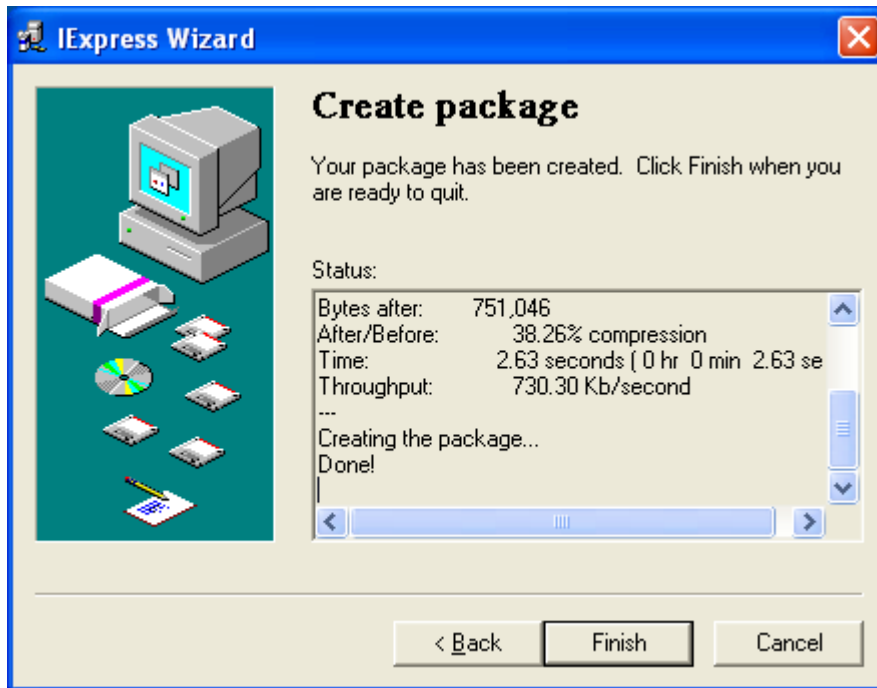


Save the SED file to preserve the configuration settings for your package.

Press Next



Press Next to create the package.



Package created!

Click Finish then run your package.