

APLNext: APL+Win to VisualAPL Component File Conversion

Version 3.0.03 of this utility is now available to convert APL+Win (extended or colossal) component files to VisualAPL component files.

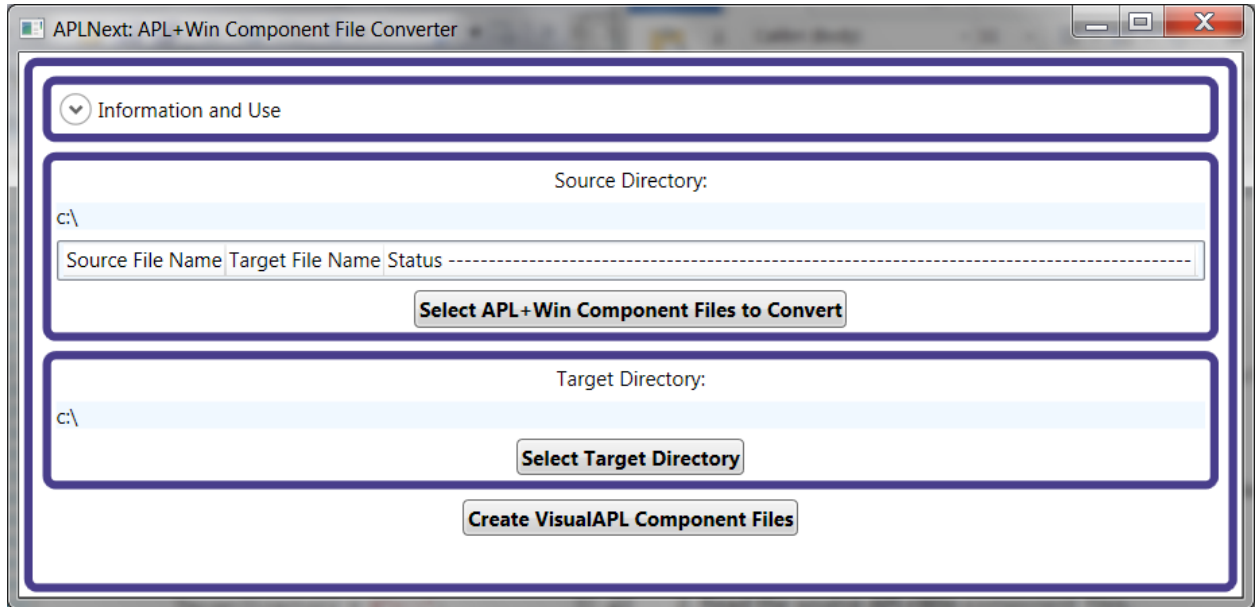
This is a 'full trust' application, so the user must have permission to write a temporary native file during processing, read the source APL+Win component files, write the result VisualAPL component files and Register APL+Win as an ActiveX server. File write permission must be available at the user-selected target subdirectory.

This utility is provided without warranty of any kind. Prepare a viable backup of your data before using this utility! End user requirements for this utility include:

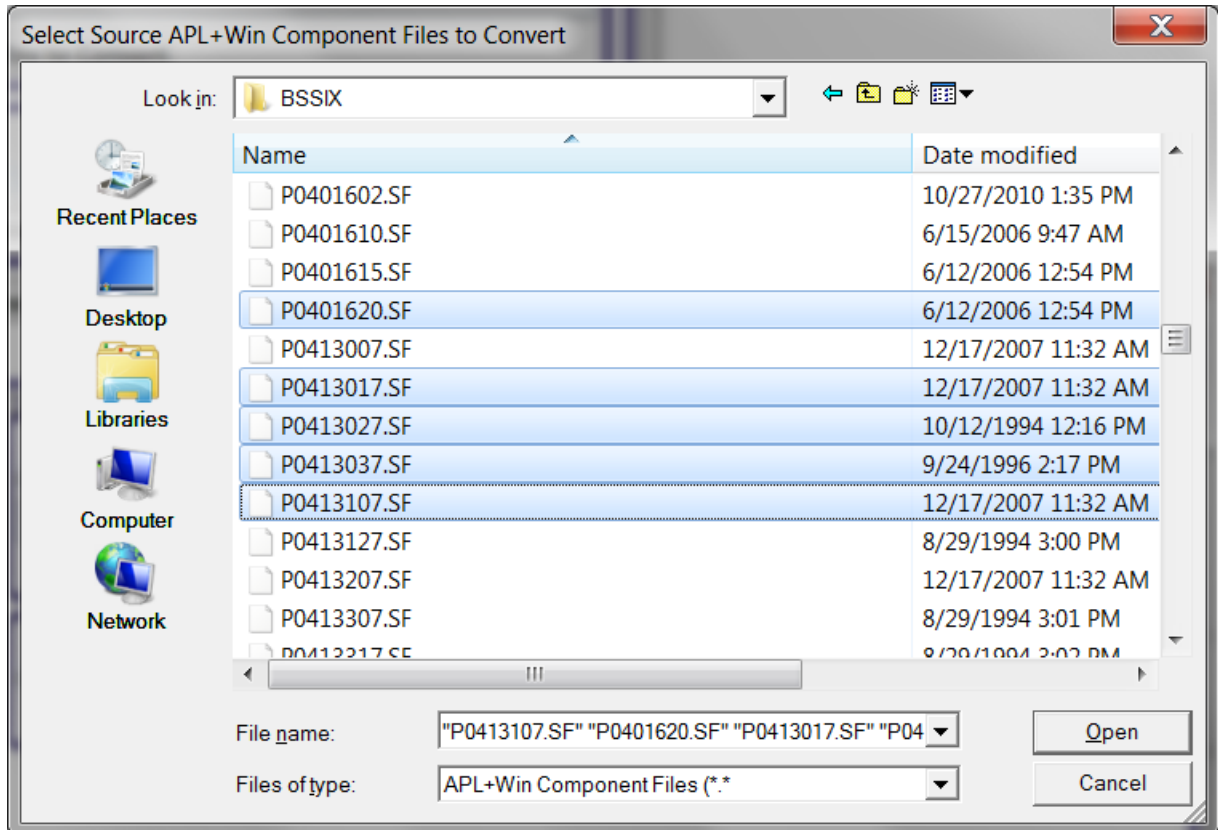
1. The APL+Serialization .Net assembly, which was used in previous versions of this utility for binary serialization, is no longer needed. Instead XML serialization techniques are used. For more information see here: <http://forum.apl2000.com/viewtopic.php?t=475>
 - The APL+Win component file data is XML-serialized using APL+Win functions
 - The XML serialized data is transferred to VisualAPL using an intermediate native file as an ASCII text vector.
 - The VisualCielo.Numeric.DataObjects.DataSerialization namespace is used to XML-deserialize the source data.
 - The data is then appended to a VisualAPL component file in the user-specified target subirectory.
2. APL+Win v10.2.01+ must be installed on the user's workstation via the installer provided by APL2000.
3. APL+Win v10.2.01+ must be registered as an ActiveX server on the user's workstation. Refer to the APL+Win documentation for details of this procedure.
4. APLNext VisualAPL for Visual Studio 2008 v1.5.8115+ must be installed on the user's workstation via the installer provided by APL2000. Remember to un-install any prior version of VisualAPL before installing the v1.5.8115+ version. The latest VisualAPL .msi installer can be found here: <http://forum.apl2000.com/viewtopic.php?t=427>
5. The APLNext.APLWinCompFileConverter .Net application must be installed on the user's workstation via the installer provided by APLNext LLC, APLNext.APLWinCompFileConverterXMLSetupV3003.msi. This installer will check that the Microsoft .Net Framework 3.5 has been installed on the user's workstation. This version of the .Net Framework may be obtained without cost here: <http://www.microsoft.com/downloads/en/details.aspx?FamilyID=333325FD-AE52-4E35-B531-508D977D32A6&displaylang=en>.

Instructions for using APLNext.APLWinCompFileConverter utility

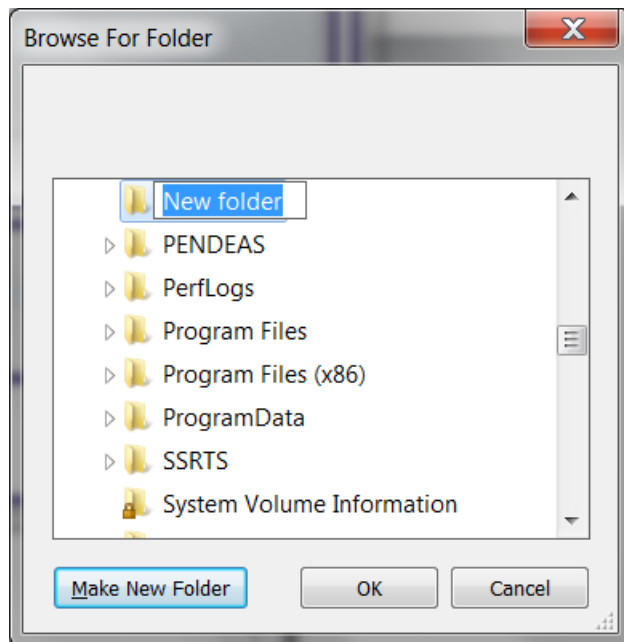
1. After all required components have been installed, use Start > All Programs > APLNext > APLWinCompFileConverter to initiate an instance of the utility



2. Click the 'Select APL+Win Component Files to Convert' button to present the 'Windows File Open Dialog'. Use the 'Ctrl + Left Click' to select the APL+Win, legacy or colossal, component file(s) to convert to VisualAPL component files.



3. Click the 'Select Target Directory' button to present the 'Windows Folder Browser' dialog to identify the new or existing, target subdirectory to contain the VisualAPL component files resulting from the use of this utility.



4. After the source files and target subdirectory have been user-selected, the main form of the utility will be updated indicating that the source files have not yet been processed.

APLNext: APL+Win Component File Converter

Information and Use

Source Directory:

C:\BLAZEESI\BSSIX

Source File Name	Target File Name	Status -----
P0401620.SF	P0401620.SF.vapI	Not processed
P0413017.SF	P0413017.SF.vapI	Not processed
P0413027.SF	P0413027.SF.vapI	Not processed
P0413037.SF	P0413037.SF.vapI	Not processed
P0413107.SF	P0413107.SF.vapI	Not processed

Select APL+Win Component Files to Convert

Target Directory:

c:\

Select Target Directory

Create VisualAPL Component Files

Click the 'Create VisualAPL Component Files' button to convert the source APL+Win component files to VisualAPL component files in the target directory. The APL+Win component files are not modified by this utility. The resulting VisualAPL component files have the same name as the source files with the additional '.vapl' extension. Subsequent running of the utility will overwrite the previously created VisualAPL files. The 'Status...' column of the listview will be updated as files are converted or errors are trapped such as attempting to convert a file which is not an APL+Win component file.

APL+Win text data is translated as ASCII, so this utility is not appropriate for converting APL+Win functions to VisualAPL functions. Instead, use the VisualAPL 'APL2UNICODE' utility or Paste APL+Win facility when converting APL+Win functions. APL+Win overloads certain ASCII code points with APL glyphs. This is not necessary in VisualAPL because it uses the APL glyphs which exist in Unicode code points outside of the ASCII code points range.

