

APLNext Commerce Server

The APLNext Commerce Server supports the https protocol. In order to take advantage of this functionality, user needs to:

- [Obtain a SSL Certificate from a Certificate Authority \(CA\)](#)
- [Obtain a SSL Certificate in Personal Information Exchange File \(.pfx\) format](#)

Other useful topics:

- [Install APLNext Commerce Server](#)
- [Example of Web Server properties setting \(SSL Setting\)](#)
- [Example of Workspace properties setting](#)

APLNext Commerce Server

Obtain a SSL Certificate from a Certificate Authority (CA):

There are many Certificate Authorities available on the market such as VeriSign, Thawte, DigiCert, and Network Solutions. There are four main types of SSL Certificates although each CA uses different product names and they are Domain SSL Certificate, Standard SSL Certificate, Wildcard SSL Certificate, and Extended Validation SSL Certificate. Note that this SSL Certificate does not need to be used exclusively for APLNext Commerce Server but a minimum of a Standard SSL Certificate is recommended. Both CAs and types of SSL Certificates should be investigated before any decision is made.

Once the decision is made, follow the instructions from the CA on how to obtain and install the SSL Certificate. Some CAs also require a manual installation of Root and Intermediate certificates as well, please follow the CA's installation instructions. In general, a Certificate Request generated in IIS from the machine where the SSL Certificate is going to be installed is provided to the CA and then the CA will provide the SSL Certificate that can be installed in IIS.

The following is an example in IIS 6 (Windows Server 2003):

- 1) Generate a Certificate Request for the CA
 - a) Open IIS manager, click **Start**, select **Administrator Tools > Internet Information Services (IIS) Manager**
 - b) Locate and then right click on **Default Web Site** on the left pane and then select **Properties**
 - c) Select the **Directory Security** tab
 - d) Click the **Server Certificate...** button
 - e) The Web Server Certificate Wizard will appear, click **Next**
 - f) Select **Create a new certificate** and then click **Next**
 - g) Select **Prepare the request now, but send it later** and then click **Next**
 - h) Enter a name for this certificate, select the desired bit length and then click **Next**
 - i) Enter the Organization and Organizational unit names and then click **Next**
 - j) Enter the Common name and then click **Next**
 - k) Select the Country/Region, State/province, and City/locality and then click **Next**
 - l) Enter the File name for the certificate request and then click **Next**
 - m) Review the summary and then click **Next** if everything is correct, otherwise click **Back** to make changes
 - n) Click **Finish** to close the wizard
- 2) Install the SSL Certificate from the CA
 - a) Open IIS manager, click **Start**, select **Administrator Tools > Internet Information Services (IIS) Manager**
 - b) Locate and then right click on **Default Web Site** on the left pane and then select **Properties**
 - c) Select the **Directory Security** tab
 - d) Click the **Server Certificate...** button

APLNext Commerce Server

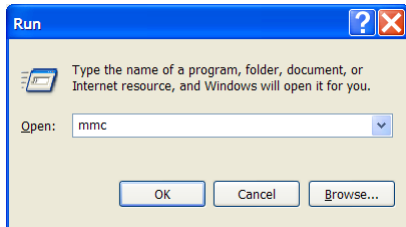
- e) The Web Server Certificate Wizard will appear, click **Next**
- f) Select **Process the pending request and install the certificate**
- g) Enter the SSL certificate path and file name or browse to it and then click **Next**
- h) Review the summary and click **Next**
- i) Click **Finish** to close the wizard

APLNext Commerce Server

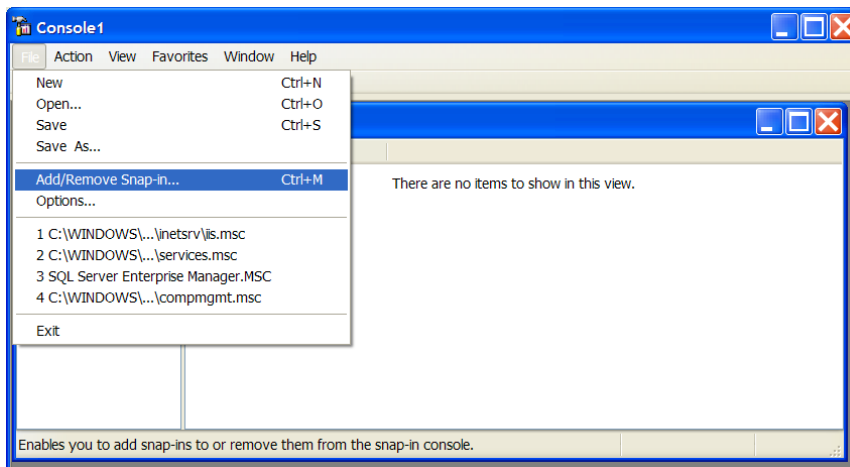
Obtain a SSL Certificate in Personal Information Exchange File (.pfx) format:

The APLNext Commerce Server SSL setup requires the SSL Certificate in a file format called Personal Information Exchange File (.pfx). Review the following steps to obtain the SSL Certificate in this format:

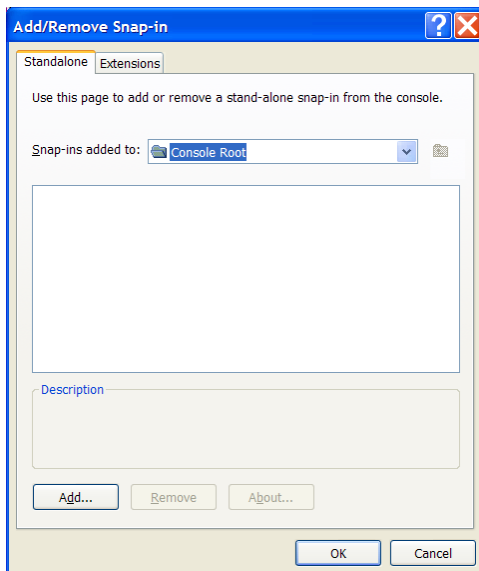
- 1) Click **Start**, Select **Run...**, type **mmc** and then click **OK**.



- 2) Click **File** and then select **Add/Remove Snap-in....**

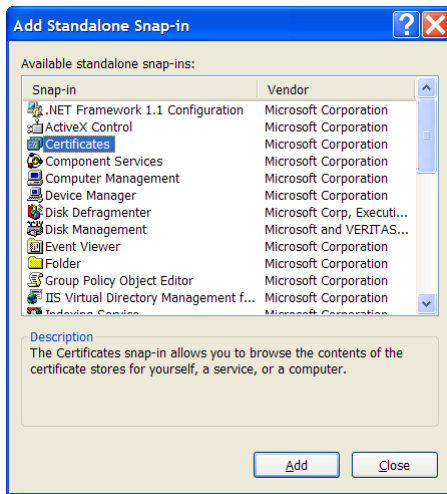


- 3) Click **Add....**

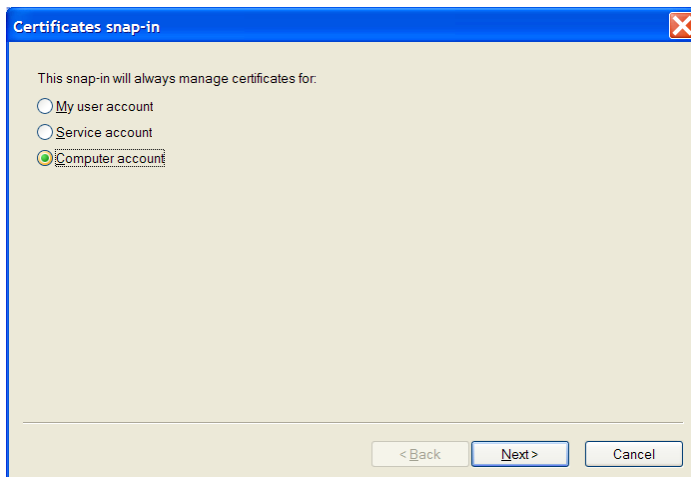


APLNext Commerce Server

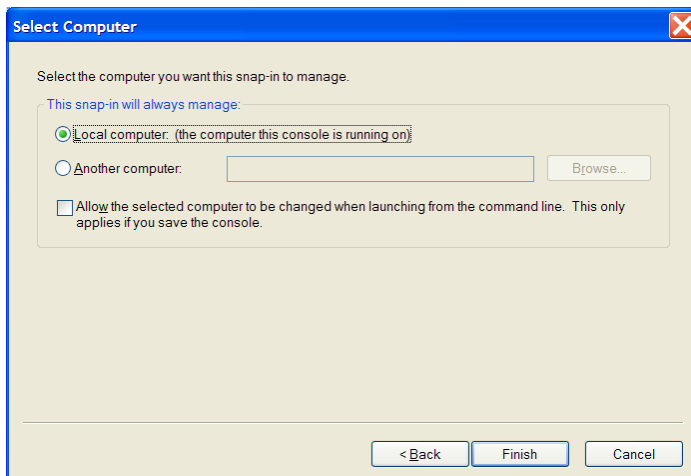
- 4) Select **Certificates** and then click **Add**.



- 5) Select the **Computer account** and then click **Next**.



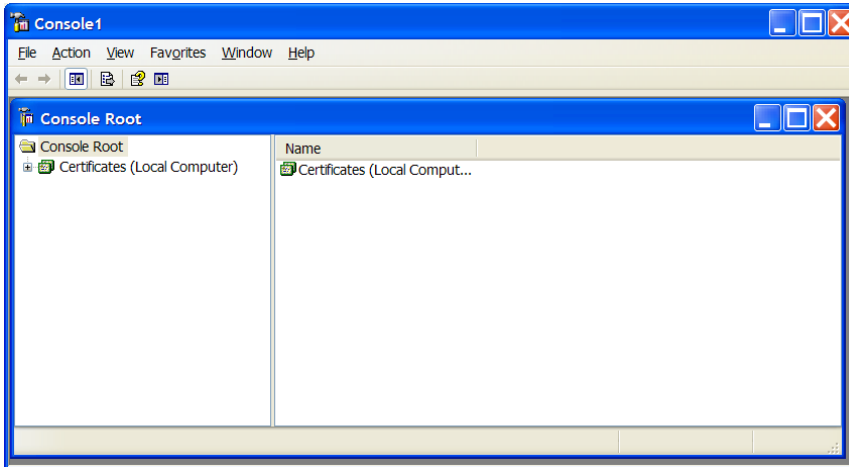
- 6) Select **Local computer. (the computer this console is running on)** and then click **Finish**.



- 7) Click **Close** to close the **Add Standalone Snap-in** dialog.
8) Click **OK** to close the **Add/Remove Snap-in** dialog.

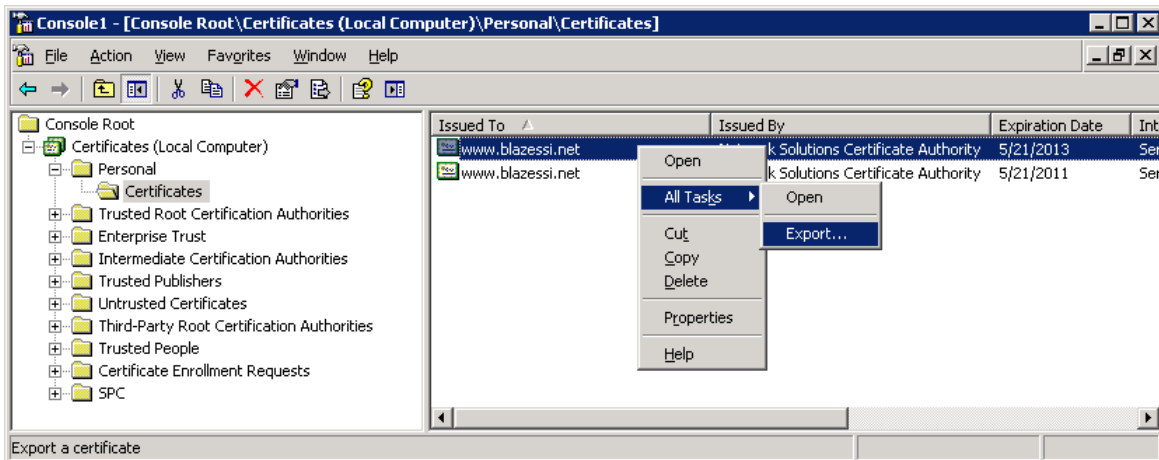
APLNext Commerce Server

- 9) The Certificates snap-in is now available.



- 10) Select **Console Root > Certificates > Personal > Certificates**.

Right click on the desired SSL Certificate and then select **All Tasks > Export....**

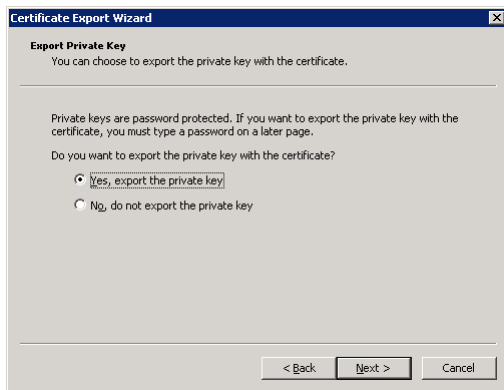


- 11) The Certificate Export Wizard will appear. Click **Next**.

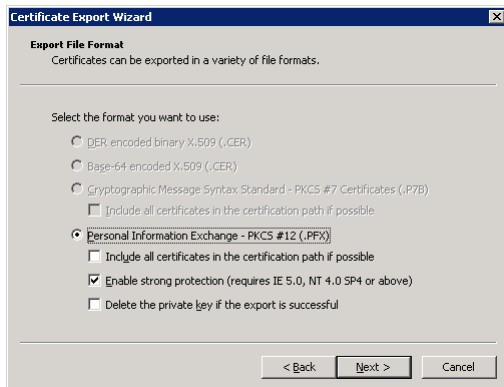


APLNext Commerce Server

- 12) Select **Yes, export the private key** and then click **Next**.



- 13) Select **Personal Information Exchange – PKCS #12(.PFX)** and check **Enable strong protection (requires IE 5.0, NT 4.0 SP4 or above)** and then click **Next**.

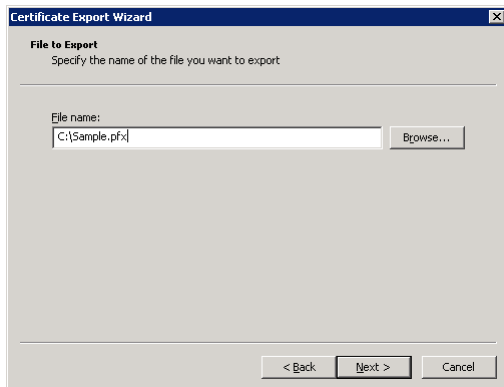


- 14) Enter and confirm password for the to be exported SSL Certificate and then click **Next**.



APLNext Commerce Server

- 15) Enter the file name including file path and extension or click **Browse** to enter the file name and then click **Next**.



- 16) Review the summary and then click **Finish** to export the SSL Certificate.



- 17) Click **OK** to exit the Certificate Export Wizard.

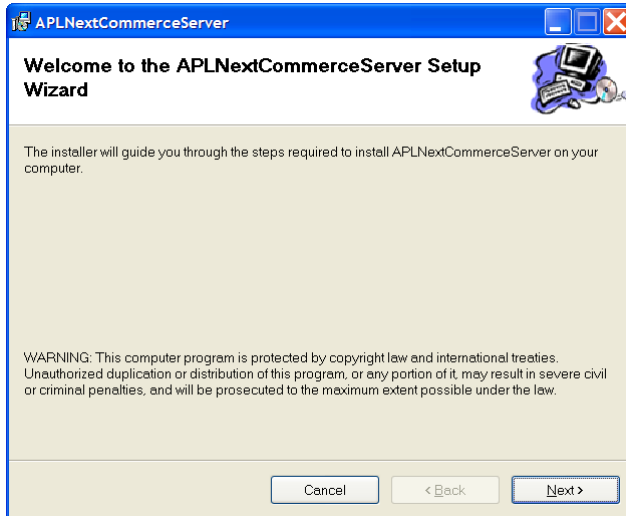


- 18) Note that this .pfx file can serve as a backup for the SSL Certificate.

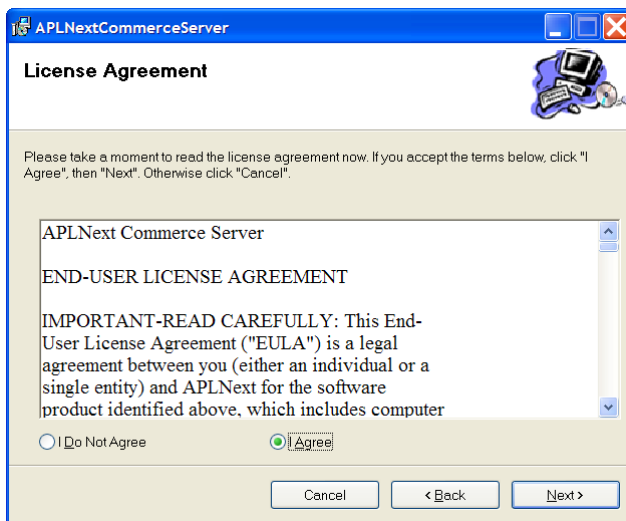
APLNext Commerce Server

Install APLNext Commerce Server:

- 1) Download APLNext Commerce Server (APLNextCommerceServerSetupv1.4.2810.msi).
- 2) Double click the file to start installation and the Setup Wizard will appear.

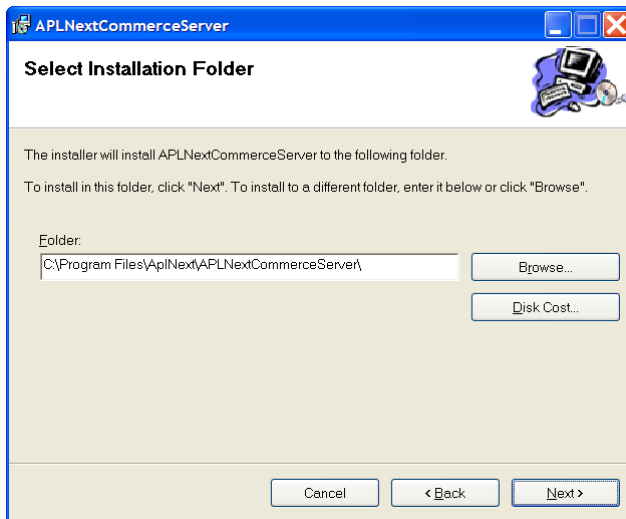


- 3) Click **Next** and the License Agreement dialog will appear.

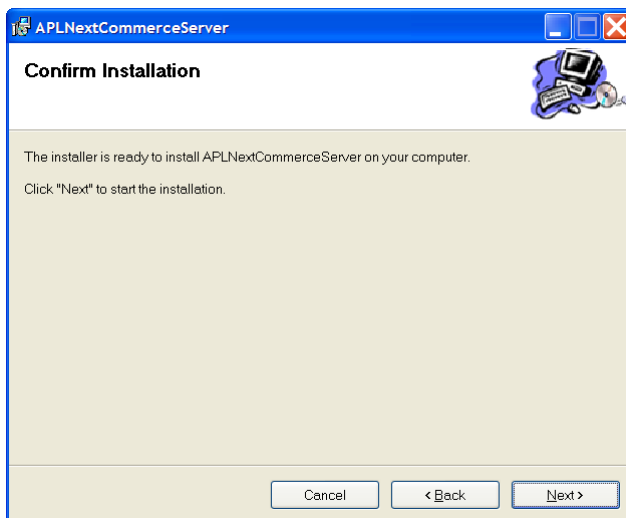


APLNext Commerce Server

- 4) Select **I Agree** and then click **Next** to continue.

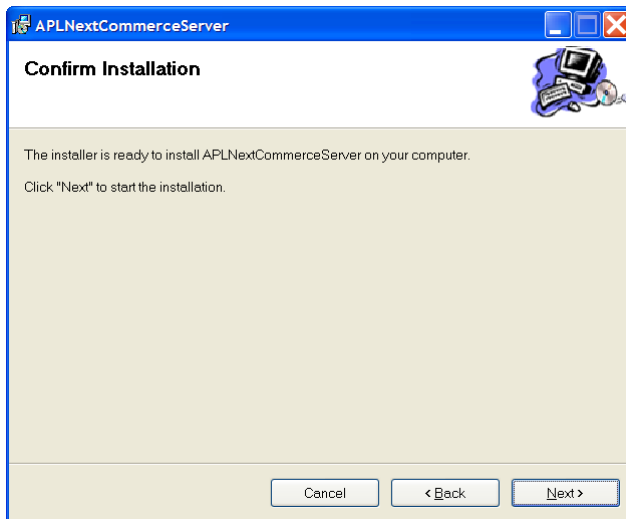


- 5) Accept the default installation folder or click **Browse** to select the desired folder and then click **Next** to continue.

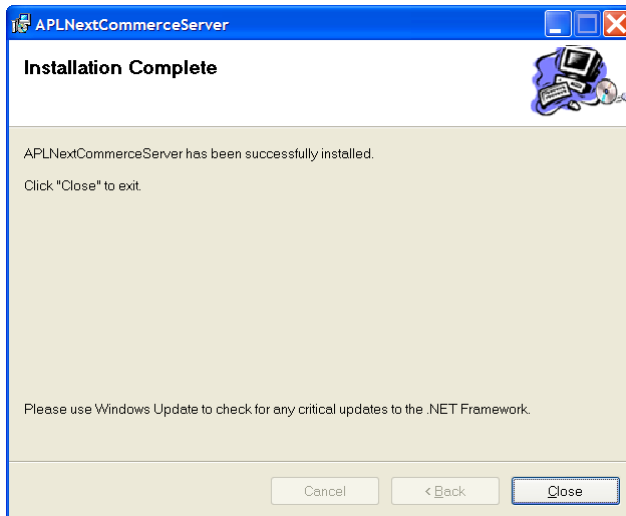


APLNext Commerce Server

- 6) The Confirm Installation dialog will appear. Click **Next** to start the installation.



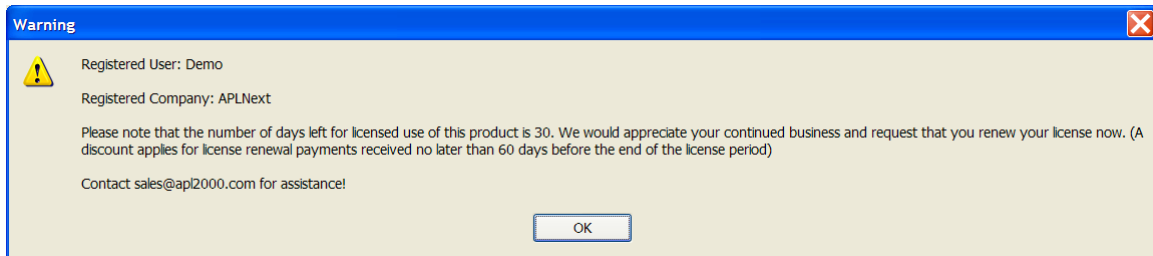
- 7) The Installation Complete dialog will appear. Click **Close** to exit.



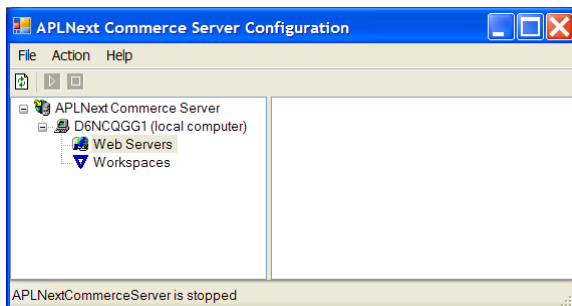
APLNext Commerce Server

Example of Web Server properties setting:

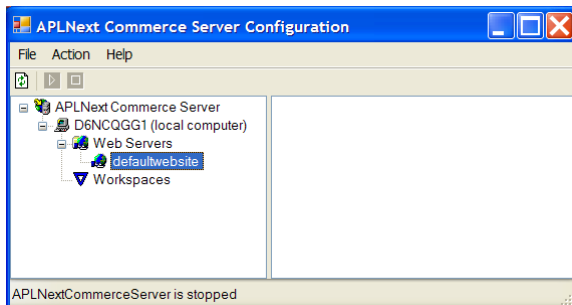
- 1) Open APLNext Commerce Server Admin, click **Start**, select **All Programs > APLNext > APLNextCommerceServer > APLNext Commerce Server Admin**
- 2) The license reminder dialog may appear. Click **OK** to continue.



- 3) The APLNext Commerce Server Configuration window will appear.



- 4) To add a new server, right click on **Web Servers** on the left pane and then select **New Server**.



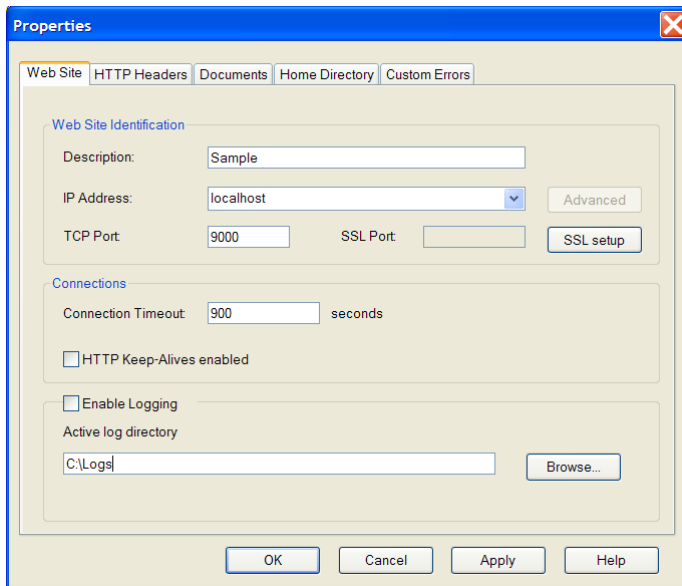
- 5) Right click on **defaultwebsite** and then select **Properties**. The Properties dialog will appear.

Enter the following as an example:

Description:	Sample
IP Address:	localhost
TCP Port:	9000
Connection Timeout:	900

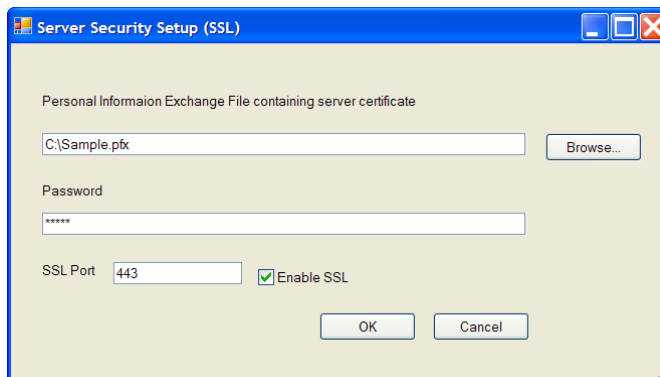
APLNext Commerce Server

Active log directory: C:\Logs



6) Apply the SSL Certificate

- a) Click **SSL setup** and the Server Security Setup (SSL) dialog will appear.
 - i) Enter the file name of the exported SSL Server Certificate (.pfx) including file path and extension or click **Browse** to locate the file.
 - ii) Enter the password to the exported SSL Server Certificate.
 - iii) Enter the SSL Port, generally it is port 443.
 - iv) Check the 'Enable SSL' checkbox.

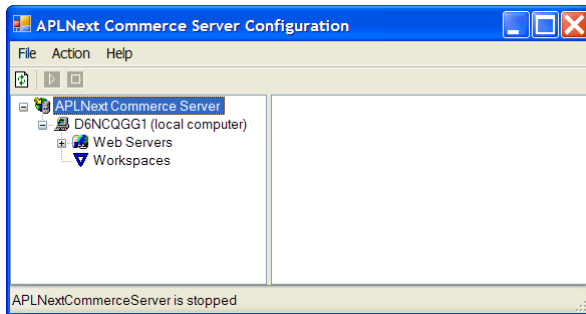


- v) Click **OK** to save the Server Security setup.
- 7) Click **OK** to save all the changes in Properties.

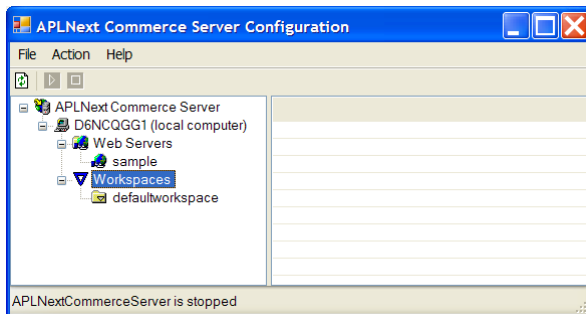
APLNext Commerce Server

Example of Workspace properties setting:

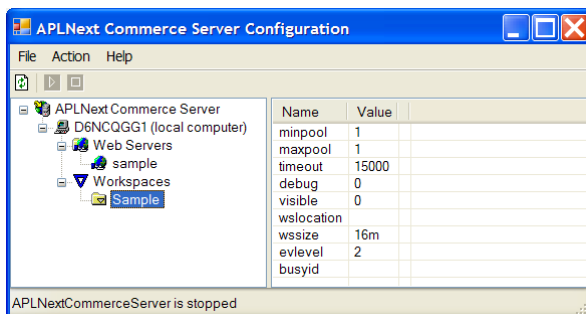
- 1) Open APLNext Commerce Server Admin, click **Start**, select **All Programs > AplNext > APLNextCommerceServer > APLNext Commerce Server Admin**
- 2) The APLNext Commerce Server Configuration window will appear.



- 3) To add a new workspace, right click on **Workspaces** on the left pane and then select **New Workspace**.

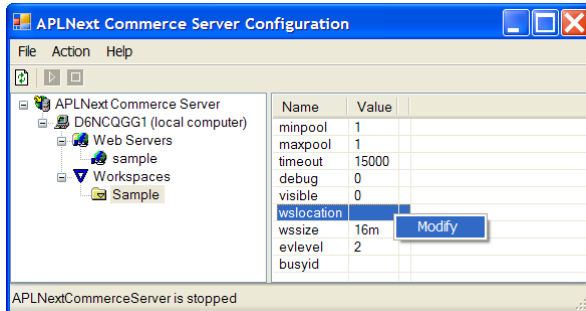


- 4) Right click on **defaultworkspace** and then select **Rename**.
- 5) Rename the workspace description to **Sample**.



APLNext Commerce Server

- 6) To specify the location of the workspace that is associated **Sample**, right click on **wslocation** and then select **Modify**.



- 7) Enter the file name including file path and extension of the workspace or click **Browse** to locate the workspace and then click **OK**.

