

Installing Microsoft SQL Server Express 2012

What is Microsoft SQL Server Express:

Microsoft SQL Server Express 2012 is relational data base software which is available at no cost from Microsoft. It can be used as a data repository for a locally-installed or server-based application. It can also be used to create a test environment on a local workstation to design, implement and debug such an application.

Get Microsoft SQL Server Express:

<http://www.microsoft.com/sqlserver/en/us/editions/express.aspx>

<http://www.microsoft.com/betaexperience/pd/SQLEXPCTAV2/enus/default.aspx>

Which SQL Server Express Download?

It is recommended that the “Express with Advanced Services (contains the database engine, Express Tools, Reporting Services, and Full Text Search)” download be selected. For more information see:

<http://msdn.microsoft.com/en-us/evalcenter/hh230763>

Hardware and Software Requirements:

[http://msdn.microsoft.com/library/ms143506\(v=SQL.110\).aspx](http://msdn.microsoft.com/library/ms143506(v=SQL.110).aspx)

LocalDB:

<http://blogs.msdn.com/b/sqlexpress/archive/2011/07/12/introducing-localdb-a-better-sql-express.aspx>

LocalDB and Visual Studio 2010:

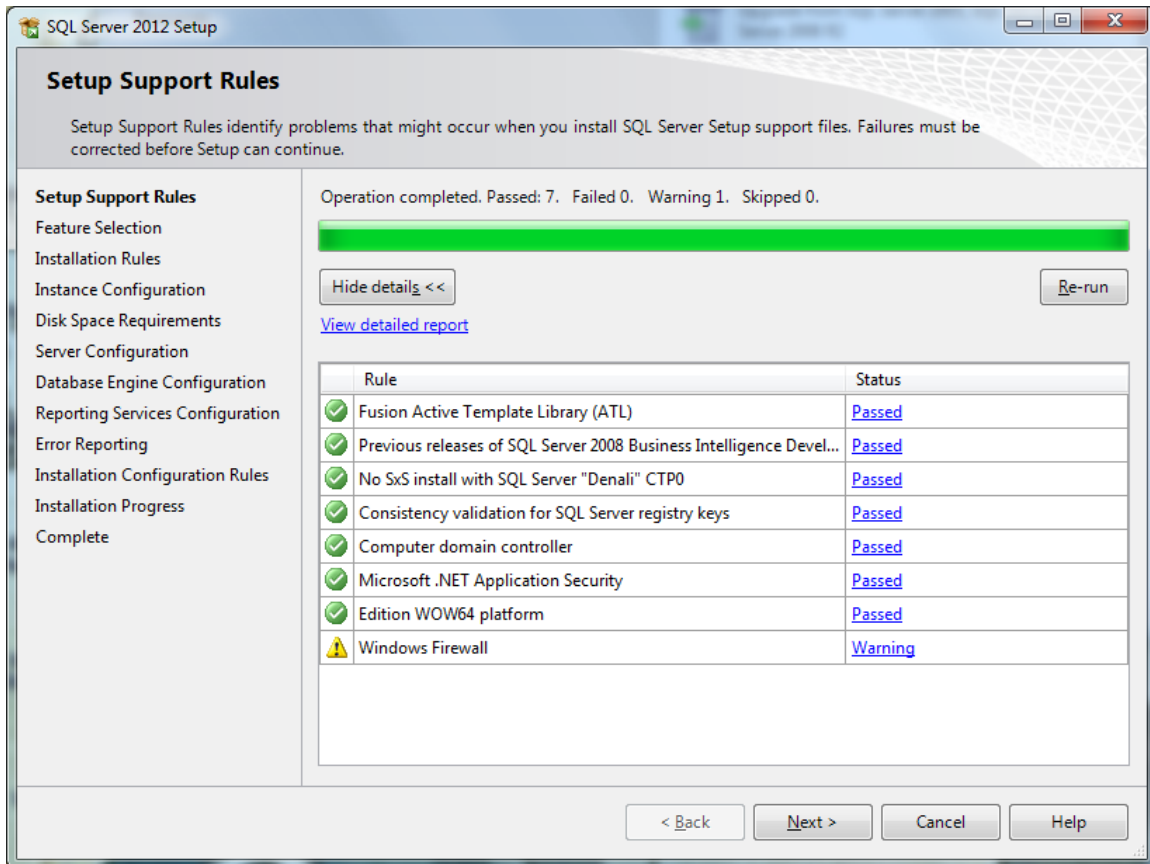
<http://blogs.msdn.com/b/sqlexpress/archive/2011/11/28/using-localdb-in-visual-studio-2010.aspx>

.Net Framework and LocalDB:

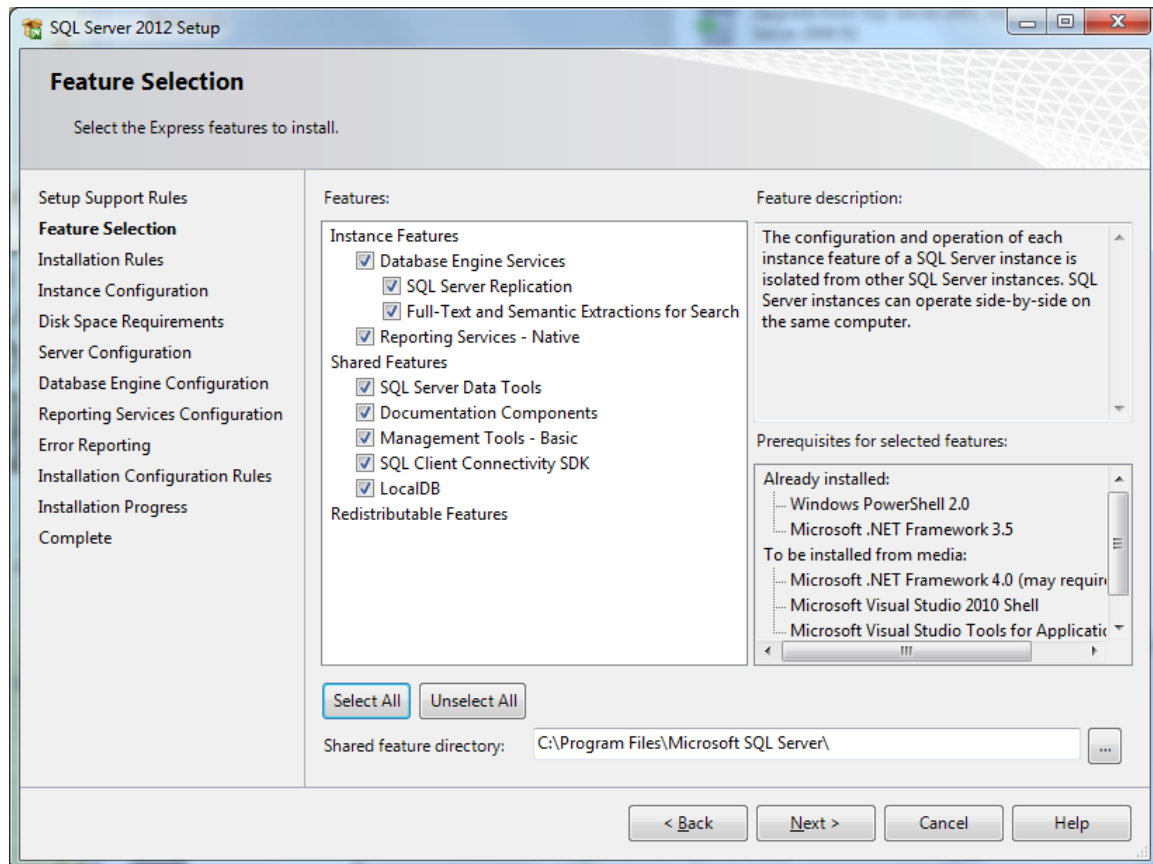
<http://blogs.msdn.com/b/sqlexpress/archive/2011/10/27/net-framework-4-now-supports-localdb.aspx>

Setup of SQL Server Express:

Double (left) click the installer, e.g. "SQLEXPADV_x86_ENU.exe", to start the installation. Assuming that all Status column values are 'Passed', click the Next button:



Select the features to install. Select All is recommended. Be sure to include the Management Tools. Click the Next button:



For this sample SQL Server database, select Named Instance with Name and Instance ID 'SQLEXPRESS11'. Click the Next button:

Instance Configuration

Specify the name and instance ID for the instance of SQL Server. Instance ID becomes part of the installation path.

Setup Support Rules
Feature Selection
Installation Rules
Instance Configuration
Disk Space Requirements
Server Configuration
Database Engine Configuration
Reporting Services Configuration
Error Reporting
Installation Configuration Rules
Installation Progress
Complete

☐ Default instance
☒ Named instance:

Instance ID:

Instance root directory: ...

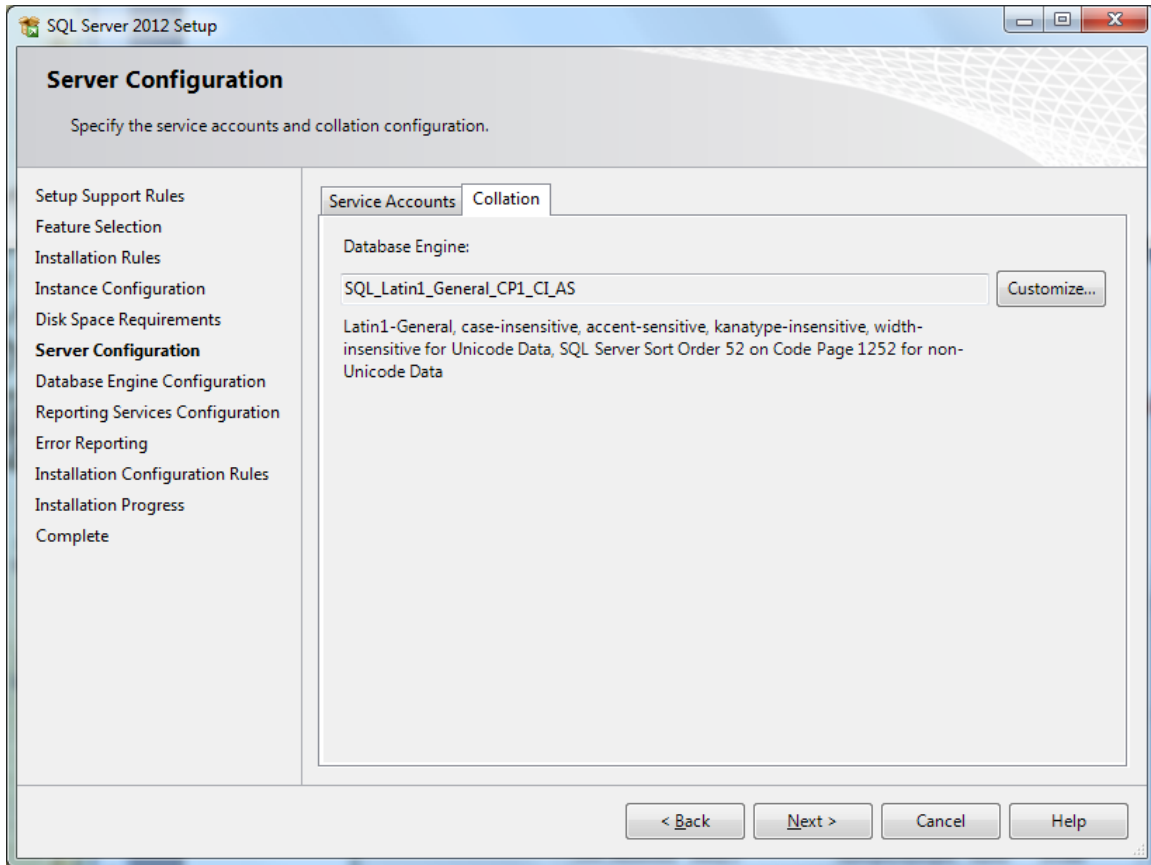
SQL Server directory: C:\Program Files\Microsoft SQL Server\MSSQL11.SQLEXPRESS11
Reporting Services directory: C:\Program Files\Microsoft SQL Server\MSRS11.SQLEXPRESS11

Installed instances:

Instance Name	Instance ID	Features	Edition	Version
SQLEXPRESS	MSSQL10.SQLEXPRESS	SQLEngine,SQLEngine...	Express	10.3.5500.0
MSSMLBIZ	MSSQL.1	SQLEngine,SQLEngine...	Express	9.4.5000
SONY_MEDIAMGR2	MSSQL.3	SQLEngine,SQLEngine...	Express	9.4.5000
<Shared Component>		Tools, Tools\ToolsClient		9.4.5000

< Back Next > Cancel Help

Contact your database administrator to determine the proper Service Accounts and Collation to use. Click the Next button:



If Windows authentication mode is selected, access to the SQL Server instance will be based upon the role of the current workstation user. If Mixed Mode is selected, the current workstation user role or a specified SQL Server administrator password may be used. Contact your database administrator to determine appropriate selection.

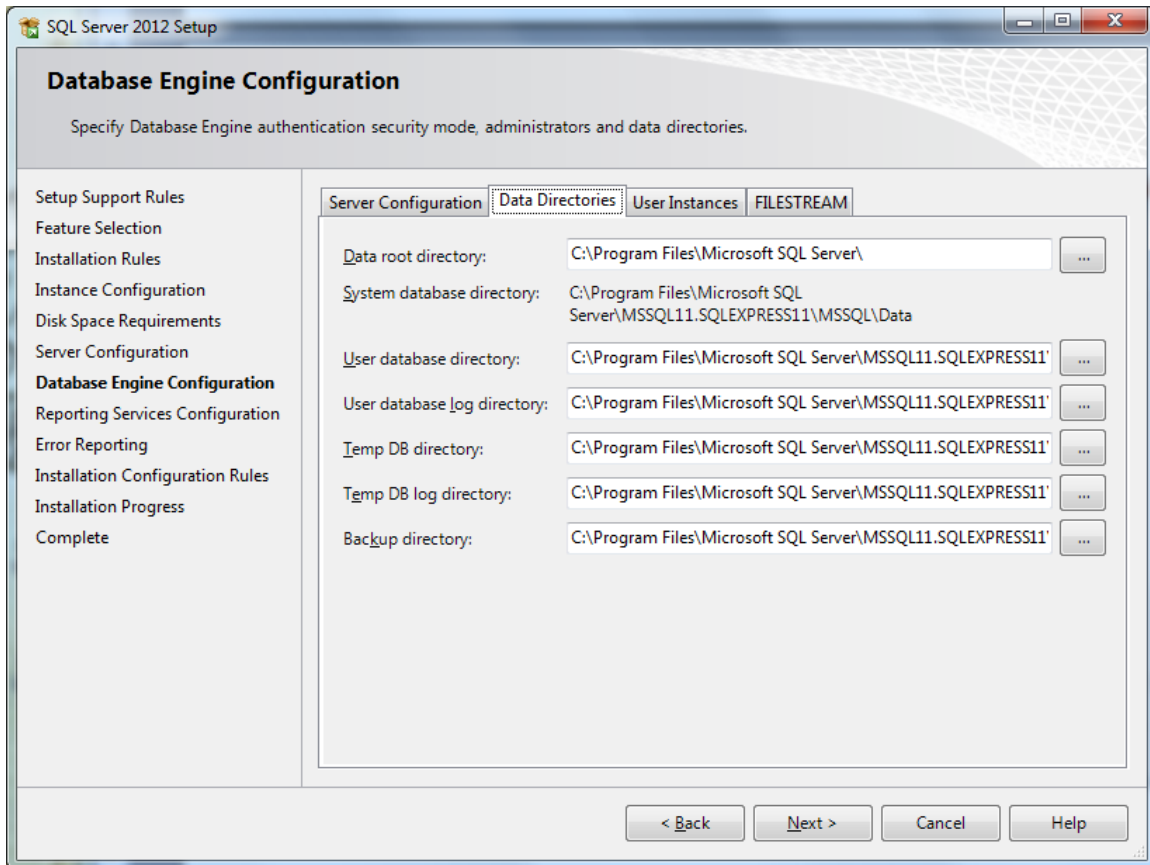
If necessary add additional SQL Server administrators.

Click the Data Directories tab.

The screenshot shows the 'SQL Server 2012 Setup' window, specifically the 'Database Engine Configuration' tab. The window title bar reads 'SQL Server 2012 Setup'. The main heading is 'Database Engine Configuration' with a subtitle 'Specify Database Engine authentication security mode, administrators and data directories.' On the left is a navigation pane with the following items: 'Setup Support Rules', 'Feature Selection', 'Installation Rules', 'Instance Configuration', 'Disk Space Requirements', 'Server Configuration', 'Database Engine Configuration' (which is highlighted), 'Reporting Services Configuration', 'Error Reporting', 'Installation Configuration Rules', 'Installation Progress', and 'Complete'. The main area has four tabs: 'Server Configuration', 'Data Directories', 'User Instances', and 'FILESTREAM'. The 'Server Configuration' tab is active. It contains the following sections: 1. 'Specify the authentication mode and administrators for the Database Engine.' with 'Authentication Mode' set to 'Windows authentication mode' (selected with a radio button). 2. 'Specify the password for the SQL Server system administrator (sa) account.' with 'Enter password:' and 'Confirm password:' text boxes. 3. 'Specify SQL Server administrators' with a list box containing two entries: 'BLAZESSIBIZ\Joe (Joe)' and 'BLAZESSIBIZ\Pik (Pik)'. Below the list box are three buttons: 'Add Current User', 'Add...', and 'Remove'. To the right of the list box is a note: 'SQL Server administrators have unrestricted access to the Database Engine.' At the bottom of the window are four buttons: '< Back', 'Next >', 'Cancel', and 'Help'.

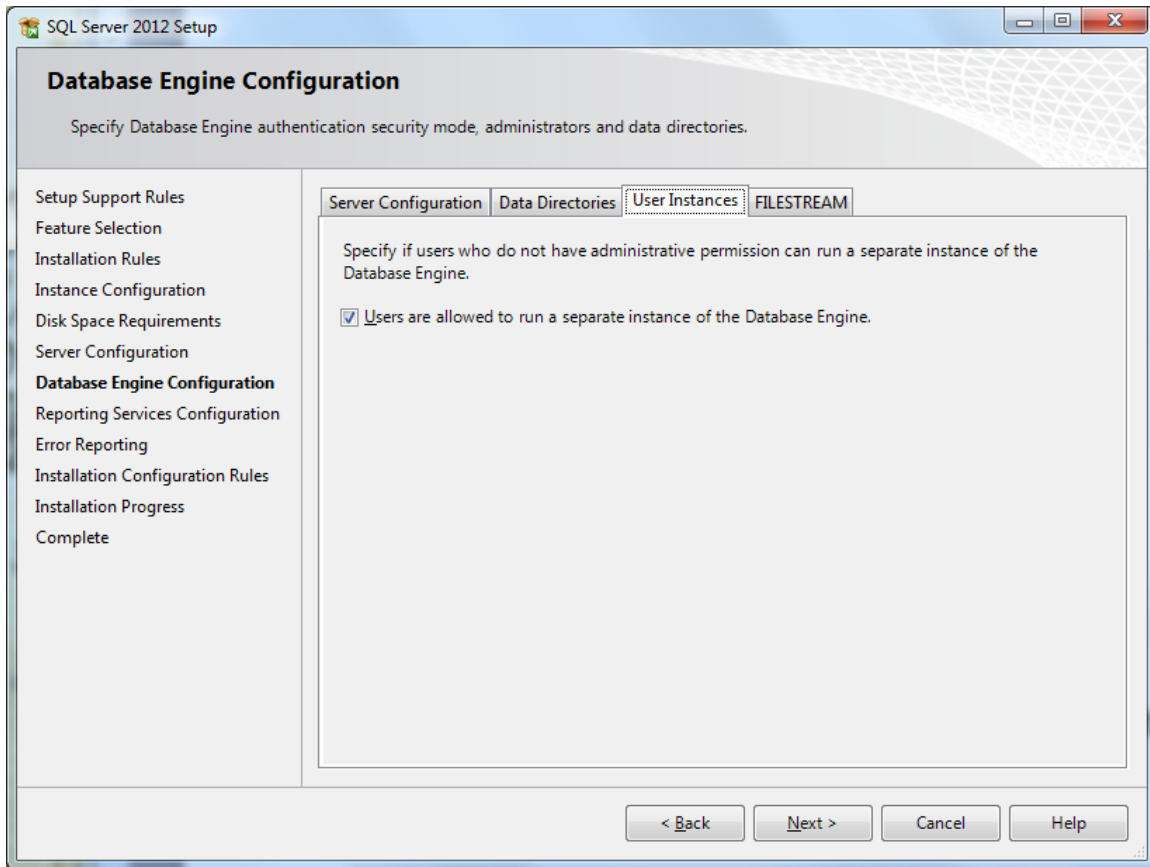
Contact your database administrator to determine the correct selection on the Data Directories tab.

Click the User Instances tab.



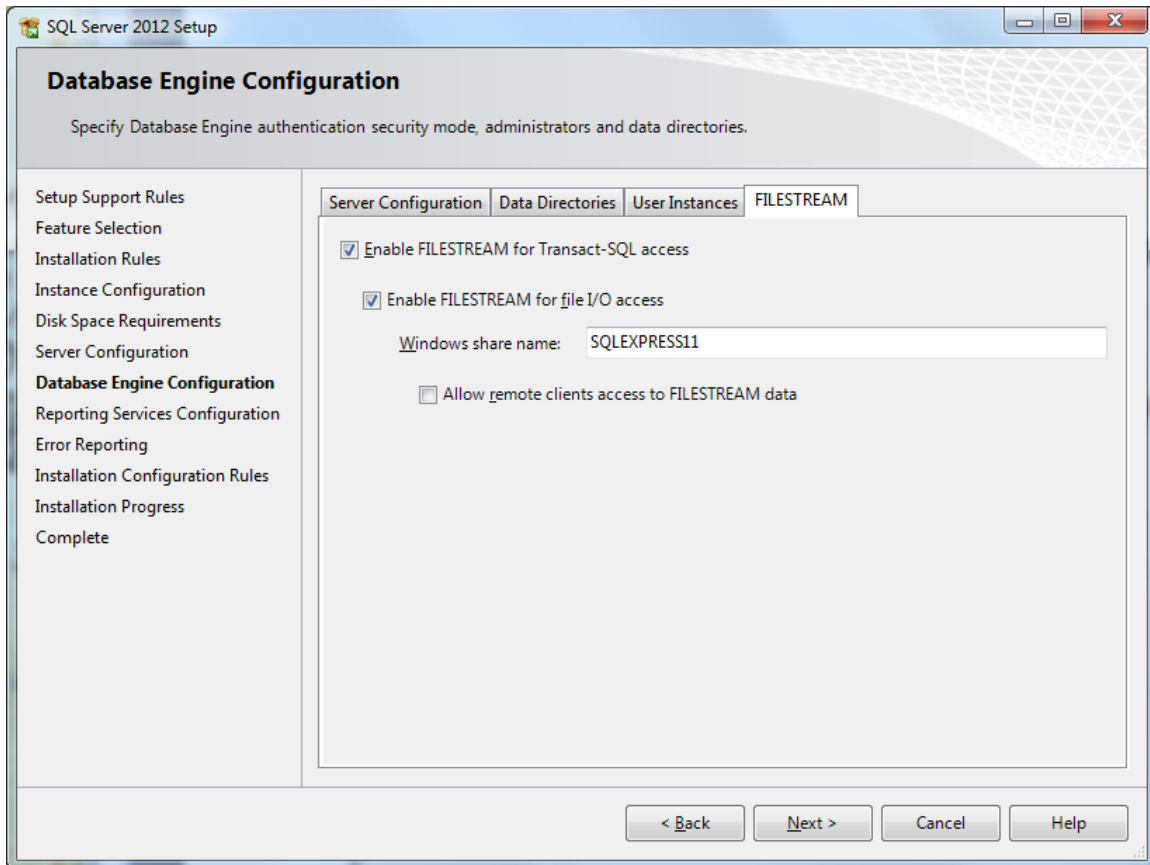
Contact your database administrator to determine the correct selection on the User Instances tab.

Click the FILESTREAM tab.



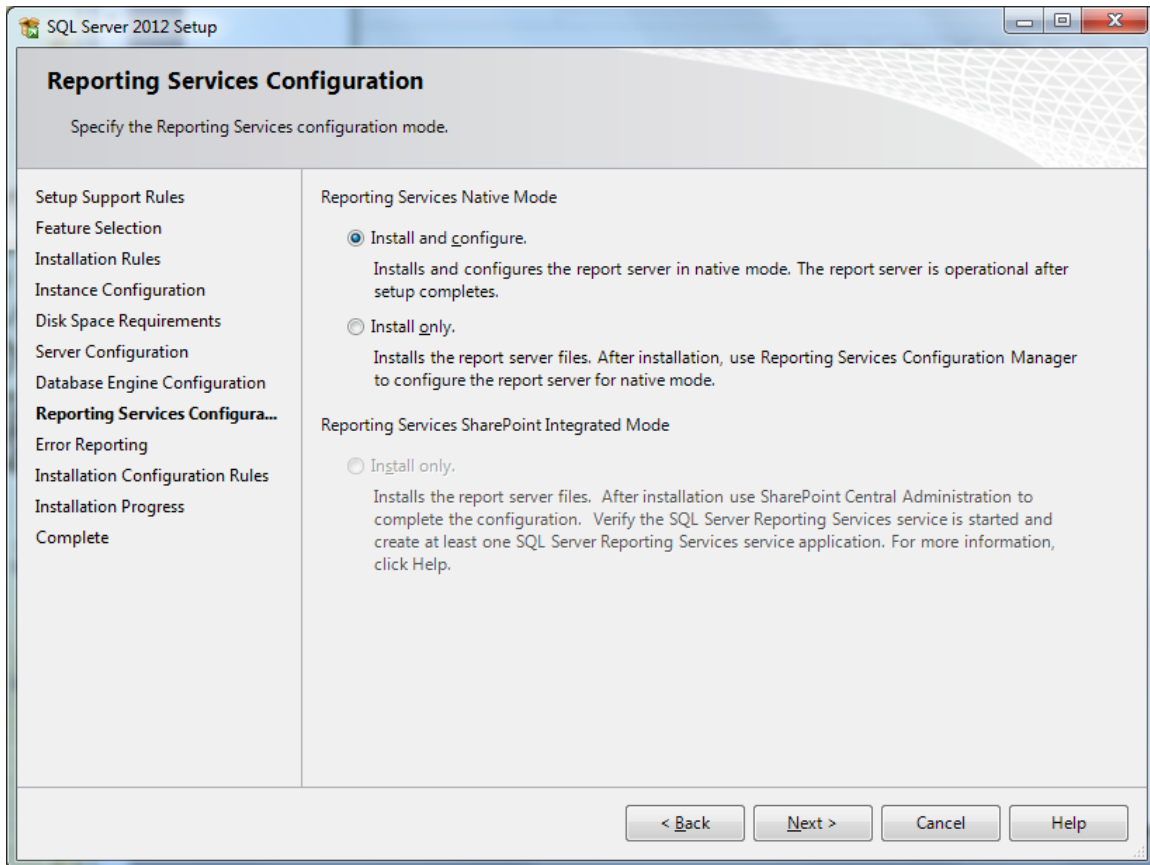
Contact your database administrator to determine the correct selection on the FILESTREAM tab.

Click the Next button.



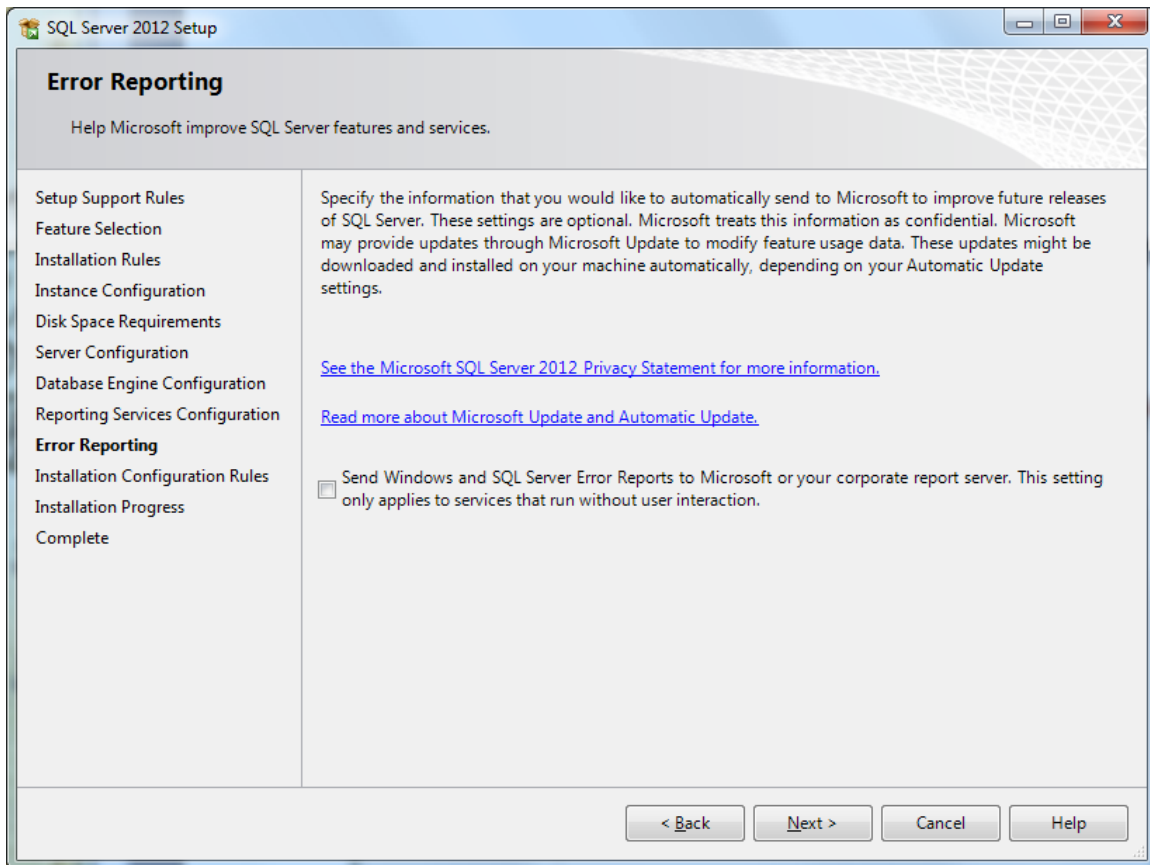
Contact your database administrator to determine the correct selection for the Reporting Services Native Mode option.

Click the Next button.



Select the Error Reporting option desired.

Click the Next button.



The Complete dialog will be presented when the installation is complete.

