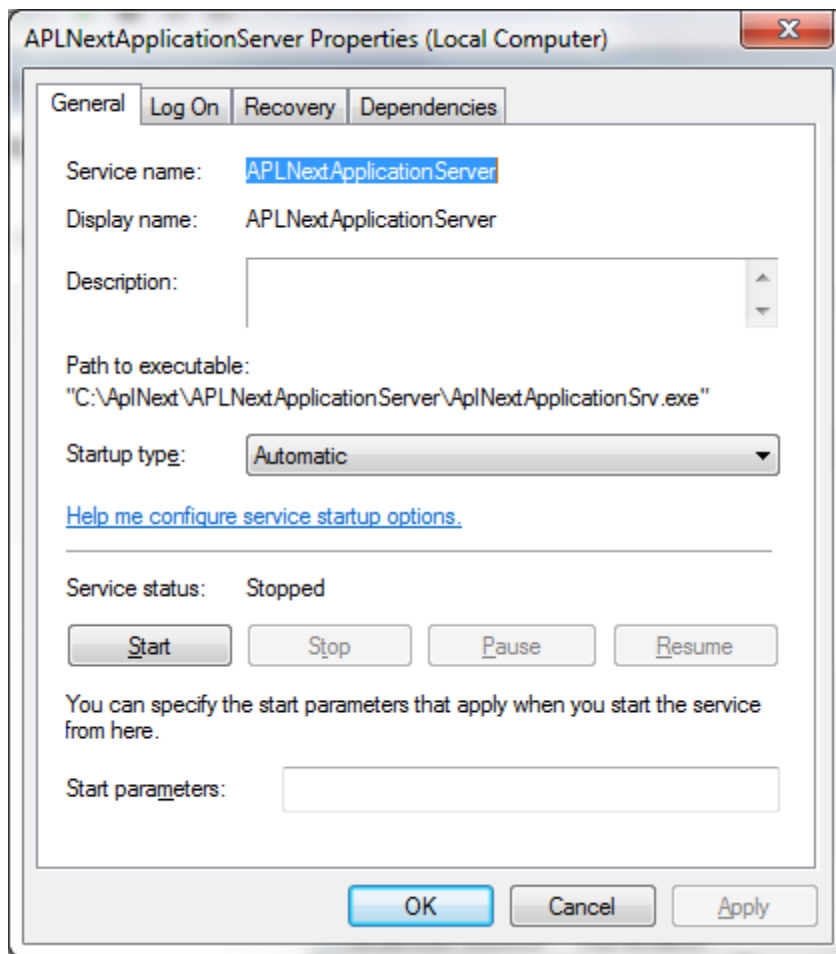


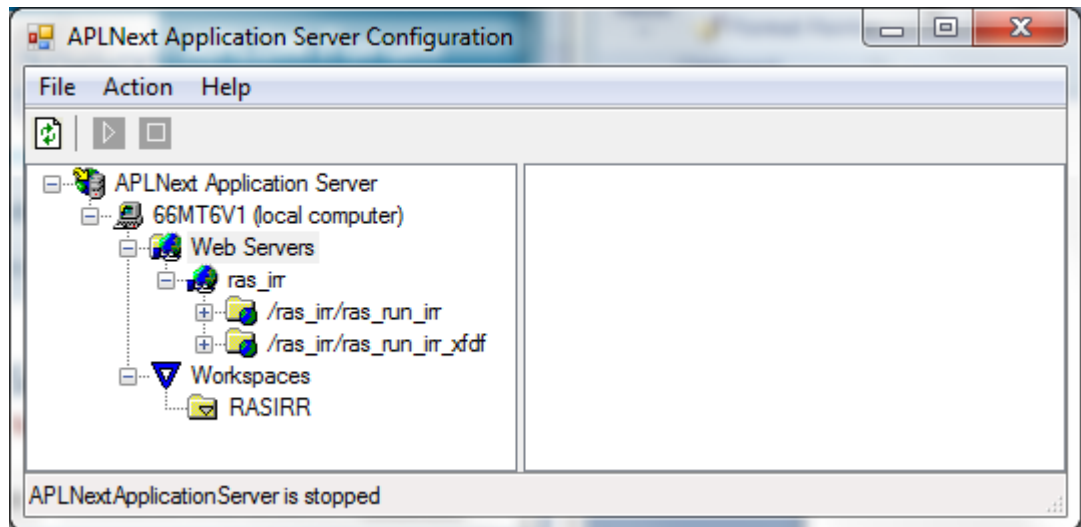
Starting/Stopping APLNext Application Server

Generally the web services configured via APLNext Application Server will start and stop automatically when the machine is started and stopped. This behavior is controlled by the Windows Services dialog accessed via Start > Control Panel > Administrative Tools > Services. This dialog controls the overall operation of the APLNext Application Server web server which can affect all web sites configured in that web server.

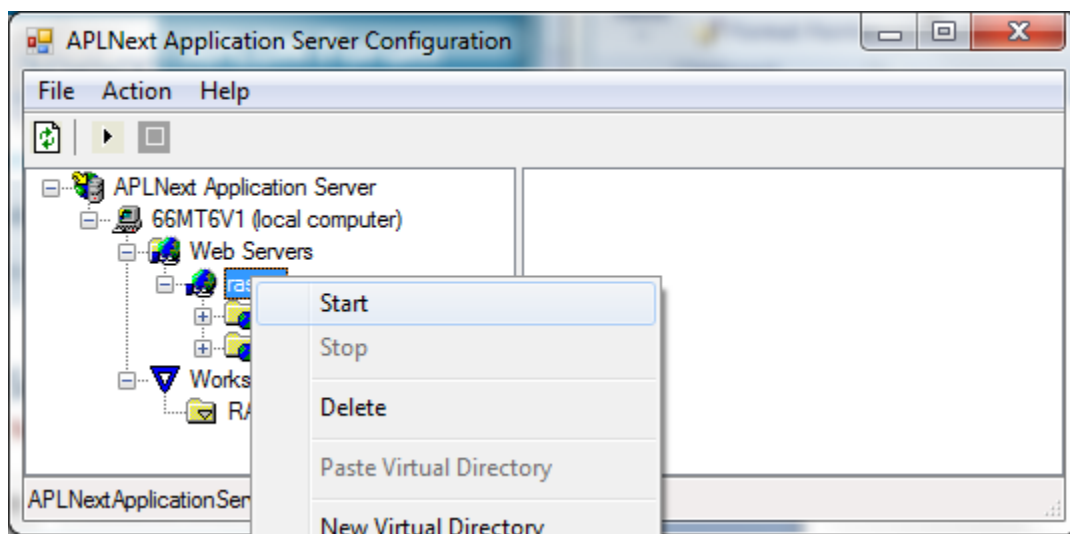


For finer control of web sites and web services use the APLNext Application Server Administration tool. For maintenance purposes it is often desirable to start or stop some or all application web services using the APLNext Application Server Administration Tool rather than stopping or starting the machine.

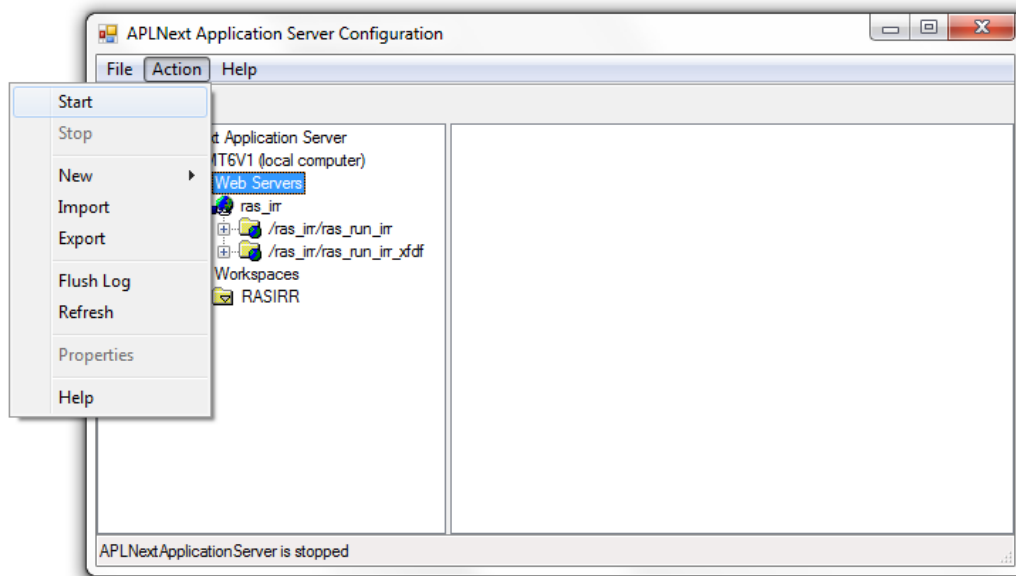
Start the APLNext Application Server Administration Tool to view the configured application web servers currently configured using APLNext Application Server. The status bar at the bottom of this dialog indicates the status of web services configured with this Tool.



Application-level web servers may be individually started or stopped. Select the desired application web server in the configuration window and use the Action > Start or Action > Stop menu items of the APLNext Application Server Administration Tool. In the following example there are two application web servers configured using APLNext Application Server, “Application Server 1” and “Application Server 2”. These names are programmer- controlled.



All application web servers may be simultaneously started or stopped by starting or stopping the APLNext Application Server service associated with the ‘local computer’. Select the web service for the ‘local computer’ in the APLNext Application Server configuration window and use the Action > Start or Action > Stop menu items of the APLNext Application Server Administration Tool.



The name of the 'local computer' is determined by the machine configuration in the Windows Control Panel > System > Advanced System Settings > Computer Name dialog:

